

**Boston University**

**OpenBU**

<http://open.bu.edu>

---

BU Publications

BUSPH Alumni News

---

1993

# SPH Alumni news: Summer 1993 no. 26

---

<https://hdl.handle.net/2144/26169>

*"Downloaded from OpenBU. Boston University's institutional repository."*

# SPH Alumni News

Number 26 \_\_\_\_\_ Summer 1993

## Director's Message

This has been an exciting year for the School of Public Health. Our research and training programs have grown substantially. The Join Together program received an award from the Robert Wood Johnson Foundation to help community groups nationwide combat substance abuse. The Medicaid Working Group received a large grant to demonstrate that cost-effective managed care systems can be set up for AIDS and chronically ill patients across the country. We have also continued such valuable programs as the Program for Health Care Negotiation and Conflict Resolution and our certificate training programs in geriatric health and HIV/AIDS and substance abuse. We have made two major additions to the faculty. Dr. David Sherr, an immunotoxicologist, has joined the Environmental Health Department and Dr. Paul Gertman, a noted health care researcher, has joined the Health Services Department.

I have particularly enjoyed working with the alumni during

my first year on the job. I have attended several Alumni Board meetings and have been impressed by the dedication and energy of that group. Rob Wald ('84) has been a valued member of the School's Strategic Planning Committee. What impresses me most, however, is that our alumni seem to be everywhere! As I meet with people at the Department of Public Health, Boston Department of Health and Hospitals, the neighborhood health centers, community agencies, and other health care organizations, it is impressive how often I discover alumni of our School.



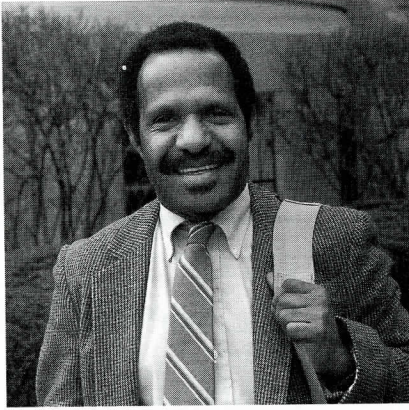
*Dr. Meenan with commencement speaker, Judith Kurland.*

I look forward to an ongoing collaboration with alumni in the coming year at the end of which we will all celebrate the 15th anniversary of our School.

Robert F. Meenan,  
Director

## Timothy Pyakalyia- A Well Seasoned Health Professional for All Seasons

It has been more than 12 years since our first foreign student, Ayo Ajayi ('82), arrived in Boston from Nigeria on a brrrisk winter day suffering from a slight case of temperature shock. In the ensuing years, hundreds of international students from all climates and continents have enriched our student body with their experiences and expertise. Timothy Pyakalyia, the former assistant secretary for health in charge of disease control for Papua New Guinea (PNG), is just one of our many talented students.



In order to appreciate Timothy's achievements, we must backpack a bit. In the 1870's, the island of New Guinea was colonized by the Dutch who settled in the west (now part of Indonesia), the Germans who claimed the north-New Guinea, and the British who took possession of the south- Papua. After World War I, Papua and New Guinea became trust territories administered by Australia; unity and independence were not to occur until the 1970's. While allied and Japanese occupations devastated the coastal towns during World War II, the Highlanders in the isolated interior continued to live as they had for centuries- as hunters, gatherers and farmers.

Timothy grew up in one of these Highlander villages, 7,000 feet above sea level, where his family grew varieties of sweet potatoes, yams, and sugar cane. "We ate sweet potatoes with some greens for breakfast, lunch, and dinner, and had meat two to five times a month." Women lived in their own houses with their children. As soon as the boys were weaned, they moved to the "Man House," where the men lived and

conducted tribal business. "I had lots of 'uncles' who would discipline me. We learned quickly that any wrongdoing injured the whole tribe."

After the war, the Australians set up rudimentary health services in the interior. "The initial aid posts were staffed by young village men who were taught to give penicillin injections for coughs and sores, and dispense malaria tablets and aspirin. Later, educated aid post orderlies replaced them." Timothy remembers his first exposure to western medicine in 1951- an effective countrywide treatment campaign against yaws, an infectious skin disease. Around that time, Lutheran missionaries settled in his village and organized more comprehensive health services and district schools. Since then the church and the government have worked in tandem to deliver health services.

**The road to education was not paved....** Timothy began school in 1957, taught by a teacher with a grade 3 education. "Those who learned taught others. Paper was precious. There were no roads to my village until 1961 so everything had to be carried 30 miles. Many students dropped out of school because they lived so far away." He learned to read and write first in his language, Enga, then in Pidgeon English, the language of communication between the different groups in the Highlands and the coast, and finally En-

glish. "Pidgeon English is a mixture of English, German, Chinese, and local coastal languages. For example, bulmakaw means cattle, a combination of bull and cow."

Timothy was precocious- (We have been told that he assisted in the preparation of the first dictionary of his tribal language and while in high school helped translate the New Testament into that language). Because of his performance in school and his high scores on the national exams, he was sent to boarding school for further education. Encouraged by the dean of the University of PNG and with funding from the International Lutheran Federation, Timothy became a physician with the agreement that he would work in the provincial church hospital for four years. An efficient administrator, he was able to work his way out in two years by bringing in qualified staff. Soon after, Timothy became one of the first two national teaching fellows in community medicine at UPNG.

Public service, not private practice was Dr. Pyakalyia's calling. From 1980-84 Timothy served as chairman of the Churches Medical Council of PNG and coordinated the health services run by the government and the churches. The Medical Council now operates 60% of the rural health services. In 1983 he was appointed commissioner of the Christian Medical Commission of the World Council of Churches represent-

ing the South Pacific region, a position he held for three years. “We functioned like UNICEF: mobilizing relief assistance to refugees, and promoting nutrition programs and primary health care.” Two years later, he was appointed PNG’s assistant secretary for health in charge of disease control. “My role was to advise the Secretary for Health on policy matters, bring in the resources either from the government or international agencies, organize the training of staff in the 20 provinces, and oversee program implementations.” He established a cost-effective malaria control program that was built in to existing health services and subsequently chaired the 1989 WHO Technical Experts Committee on Malaria. The use of a multidrug therapy in his leprosy treatment program reduced treatment time and costs. The TB program was another success—decreasing treatment from 18 months to six. Immunization programs and coverage were expanded. PNG has the distinction of being one of the first countries to ban smoking advertisements. “We organized and mobilized the physicians to lobby the parliament in support of our anti-smoking legislation and it worked.” Timothy also reorganized the “permanent partnership” between the churches and the government to make the delivery of health services more efficient.

**A First...** While at BUSPH, Timothy has been promoted to

First Assistant Secretary for Primary Health Services in charge of all preventive and promotive health services including rural health services. There will be new challenges to face: the increase in AIDS cases and noncommunicable diseases such as diabetes, cancer, and heart disease in the urban population; the escalating costs of drugs; renovation of older health facilities; and as in most countries, the need to do more with less money while continuing to provide high standards of care. “We must also provide for the next generation. Eighty per cent of the population still lives in villages and although highways have replaced foot paths, in the Highlands only 20-30% of the girls attend school beyond the sixth grade. Education is not compulsory. Dental health is inadequate and in some communities it is still the norm to lose all of your teeth at 35. The average life span has only been lengthened from 49 to 54 years. Almost 47% of the population is under 15 and we must reach these children through health education programs.”

Timothy is proud of his next generation: Vincent (15), Myron (13) and Jamila (8). He has been married since 1977 to Jennifer, a woman from his own province, for whom he paid a “bride price” which we will not divulge, but she was worth every pig. Jennifer, too, is very accomplished. One of the few female college graduates, she’s a midwife and acting matron for the OB/GYN

unit of the 800-bed Port Moresby General Hospital, the country’s largest hospital.

Timothy acknowledges that he has been lucky; he has never had to compete for a job. His talents have been recognized. He knows it would be more lucrative to be in private practice, but he is committed to serving his people. When he returns to PNG, he will be one of the few qualified public health people at the national level. “I feel responsible for showing the way and teaching others what I have learned. The country has always relied on overseas experts. Now we want to strengthen our own staff and take over the technical positions. I have had the opportunity to travel, to listen and to be exposed to other views. Soon I will be applying what I have learned at the School of Public Health. My long-term goal is to be an effective permanent public servant.”

.....

### The Geriatric Health Training Program- A New Approach to Old Problems

“If it’s Tuesday, I must be here....” For the past two years Janet McGill, the program coordinator of the innovative Geriatric Health Training Program, a collaborative project between the Mass. Department of Public Health and BUSPH has been a happy traveller, dividing her time and office between 150 Tremont St. and 80 E. Concord St.



The never retiring Alan Balsam ('82), director of the Elder Health Unit at DPH and co-director of the Geriatric Health Training Program, takes credit for recruiting Janet away from the Executive Office of Communities and Development (EOCD). Gail Douglas ('88), SPH Health Services Department faculty member and co-director of the program, readily concurred with his choice.

It was Janet's diverse experience in elderly health care and knowledge of resources that impressed Alan and Gail. After receiving an MEd from Harvard, she worked for four years at Beth Israel Hospital as a community service specialist assisting a large elderly population to access services in the hospital and community. ("You learned quickly what their concerns were.") Then a switch to the public arena- as a management representative at EOCD responsible for policy and the overseeing of 30 housing authorities in the southeastern part of Mass. "I spent much of my time dealing with elderly housing issues and programs for elders in public

housing. I worked with the Executive Office of Elder Affairs and participated in training sessions for housing managers and their maintenance staff who are often the first to learn of problems. My experience at EOCD taught me a lot about the challenges of establishing consistent and fair policies for a diverse and growing population of elders and families." Three years later, Janet accepted the offer to create a new geriatric health care training program.

Funded by the Bureau of Health Professions, Health Resources Service Administration, the program's mission is to increase the communication between schools of public health and state departments of public health. "We hope that the program will also expose SPH students to the realities of working in public health." For the first year Janet met frequently with the advisory committee and project team, and did outreach to community and minority organizations to find out their needs. Focus groups talked about preconceived ideas of what being elderly meant, what their needs were, and the importance of giving the elderly client respect and some control. "People enjoyed having the chance to talk about what they did. They wanted the training program to represent them-to have presenters from different ethnic backgrounds and include older people too. By listening to them, we were validating their importance."

The response to the workshops was tremendous. Women (yes, all of the participants were women, reflecting the nature of the field), were excited about the chance to get continuing education courses. They were directors of small councils on aging, case managers, housing managers, and hospital discharge planners from urban and rural areas, all anxious to learn practical skills and share experiences.

The program began in January in space donated by the Kit Clark Senior Center in Dorchester, and culminated April 7 with a ceremony for the 26 graduates. Winter weather (there was a snowstorm the first scheduled workshop) did not dampen but whetted their enthusiasm. Janet admits to being nervous that first night, "... but Gail was calm."

The participants were impressed by the diversity and depth of the presenters. SPH alumni were featured: Chris Mitchell ('88) gave people useful information about the financial aspects of Medicaid and Medicare. Barbara Hopcroft ('88), executive director for Living is for the Elderly, shared the spotlight with Annie Rice, a nursing home resident, as they discussed quality of life issues for elders living in residential settings, how one must advocate for oneself and learn to work with the staff. Other speakers, including DPH staff and Elsie Frank, president of the Mass. Association for Older Americans, talked about ageism, senior violence preven-

tion, nutrition, working with Alzheimer's clients, and medication misuse and abuse. "When Donna Raulbach of the Executive Office of Elder Affairs led the session on elder abuse, she listened to the participants' criticism of the unresponsiveness of OEA to their complaints. The workshop gave the group access to OEA and participants later felt that they had been heard because steps were then taken to rectify the situation."

Both the organizers and participants felt that their goals were met. "Although we didn't get as many people just entering the field, we had a lot of front-line geriatric health providers who found the topics relevant and useful. The sheer act of being together had an impact on the group. They were remarkable." Janet personally learned a lot—the importance of education on a person. "It was a powerful experience for me to have the opportunity to put together a program and see participants use it and contribute to it. The experts don't know everything. The group learned just as much from each other and developed new relationships. It was the combination of presenters and participants that made it work."

**She said....** "Gail and Alan were terrific people to work for and with. They were responsive, great to bounce ideas off of, and dedicated to the program."

**They said....** "Janet has been a gift to the Geriatric Health Training Program. Her ability to negotiate the many community interests on issues of training and education, and program and policy development for front-line elderly health workers and professionals alike, speaks to her integrity, sense of purpose, and clarity of vision." - Gail Douglas

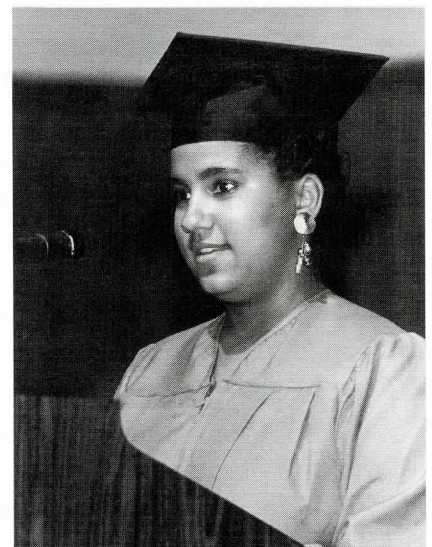
"In addition to being extremely knowledgeable and hardworking, Janet has the ability to make people, regardless of background, feel very comfortable working with her, a rare trait to find in colleagues." - Alan Balsam

The second training program, held at the North Attleboro Council of Aging, finished July 20 and was another certified success.

## SPHappenings

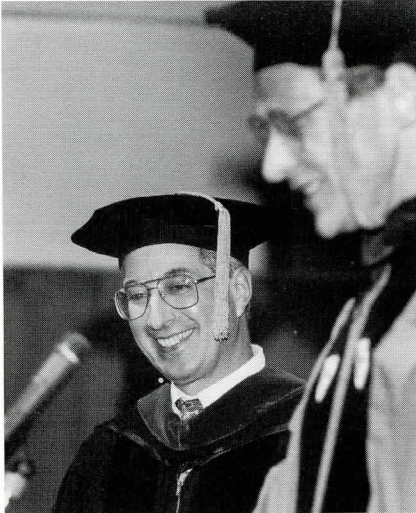
**Commencement breaks 100 degree mark...** On May 16 over 100 MPHers received their diplomas including the first class of eight students from the Nurse-Midwifery program. Doctoral students included Susan Proctor and Sunita Gulati (environmental Health) and epidemiologists Lynn Moore (MPH '87) and Yuqing Zhang. Commencement speaker, Judith Kurland, former commissioner of Boston Department of Health and Hospitals,

stressed the important role public health professionals must play in health care reform. She urged the new grads not be afraid to be "prickly and loud," and to "comfort the afflicted and afflict the comfortable.... You must share the hope... be proud of your bleeding heart...." Student speaker, Kristin duBay, talked about achieving the balance of preserving individuality and diversity while working for the common good.



*Kristin duBay, class speaker*

**Kudos for Kayne...** Dr. Herb Kayne, the first recipient of the Norman A. Scotch Award for Excellence in Teaching, was honored at commencement for his performance in classroom teaching and his commitment to advising and mentoring students. Data collected from students, faculty, and recent grads revealed such findings as "He challenges students to think creatively.... makes learning a wonderful experience... a gifted teacher." Kayne has eased many a biostatistic fear over the nu-



*Biostatistics? Elementary, my dear Watson.*

merous years that he has been at BUSPH.

### **A Drop (SPH) and an Add (MED)...**

In April, Rachel Paquette, our registrar for eight years, withdrew from SPH to become the registrar for BU Medical School. You can be sure that Rachel filled out her change of address form promptly as instructed. Rachel was dedicated to SPH students, and succeeded in making the myriad of student form-filling activities as easy as possible. We wish her much luck with her new charges.

Our new registrar, Judith Hull, is no stranger to computer forms. She worked for five years in the BU registrar's office and from 1985-1991 was the registrar and director of admissions for Harvard School of Public Health. We know that Judith will carry on the tradition of providing excellent service to students.

Alison Primavera, assistant director, Academic Services, dropped a bundle- a bundle of joy on March 22 when she gave birth to son Kai Thomas. Alison has returned from maternity leave and is back in the baby swing of things.

**New Appointments:** Paul Gertman, MD has recently been named the director of a new program in health care research. Dr. Gertman is the former chief of the Health Care Research Section in the Department of Medicine at the Medical Center and the founder of the Health Data Institute, a very successful health data analysis firm. Gertman will be responsible for developing an academic program in health care research and education.

Associate Professor Dan Merrigan ('85) has been appointed to the newly-created position of assistant director for Public Health Practice. Merrigan will serve as the principal liaison with public practice health agencies including DPH, Boston Dept. of Health and Hospitals, and the CDC, and will also help to coordinate a more formal practicum program for students. His work will enhance our commitment to and linkage with the practicing public health community.

Betty Ollen, staff member in the Director's Office, has become our communications officer, responsible for internal and external communications for the

School as well as special projects.

**Act globally and locally...** On June 25, the School signed an agreement with the Peace Corps and with the Plymouth Housing Authority on behalf of 13 Mass. housing authorities, to initiate a Peace Corps Fellows Program. The program was initiated by Joan Pimental, executive director of the Plymouth Housing Authority and Associate Professor Jonathan Howland ('84). When the program is funded, returning Peace Corps volunteers will enroll in the MPH program while living and working on public health-related projects at specific housing authorities. Their work will focus on family self-sufficiency and other service projects such as violence reduction and substance abuse education. RPCVs will be able to put their skills and expertise to use in needy communities. SPH faculty will also be involved in conducting special workshops to train housing authority personnel about the public health issues and problems they encounter in their resident populations.

### **Public Health Forums For All...**

The School will be organizing a series of public health forums to be held on most Tuesday afternoons from 4:00 - 5:00 in room L-112 beginning September 14. Each department as well as the Center for International Health will be sponsoring about six sessions through June 1994. Health Services will inaugurate the forum with Rick

Kronick, PhD, a core group member of the Clinton Health Care Task Force, who works closely with Bob Master's Medicaid Working Group, to talk about national health care reform. On September 21, Wendy Mariner of Health Law will discuss "The Puzzling Politics of Vaccine Development and Distribution. Other topics will include a panel on women's health issues (EB Dept.), "effecting social change through enlightened maternity care," (Nurse-Midwife Education Program), and a public hearing on chlorine (EH Dept.). Alumni are encouraged to attend. The School is applying for continuing education credits for medicine, nursing, and social work. For more information, contact Betty Ollen, 638-4640.

**Join Together...** The first Join Together public policy panel convened last year to explore ways communities can restrict underage access to alcohol. Some states have already used the panel's recommendations, which were published this spring, to implement legislation. The recommendations and a companion guide that suggests strategies for reducing underage access to alcohol have been sent to 20,000 community groups around the country; feedback has been very positive. The panel is chaired by Joseph Brennan, the former governor of Maine, which was the first state to lower the legal blood alcohol content to 0.02 percent for drivers under 21.

Join Together's second public policy panel, which is examining how substance abuse treatment coverage should be financed under national health care reform, met in the late spring and plans to release its recommendations in the fall. For copies of Join Together publications, call 617/437-1500 or fax 617/437-9394.

**Out of Africa into the city...**

Two SPH students were named Schweitzer Urban Fellows this spring. The \$2,000 fellowships were given to Ken Vail who is studying ways to provide better care to intravenous drug users and Jean Magloire who intends to increase awareness in the Haitian community of HIV prevention, incest and sexual abuse."

.....

**Department Data**

**Environmental Health**

**New Faculty...** We are pleased to announce the arrival of David Sherr, Ph.D., a former associate professor of pathology at Harvard Medical School, who joined the department this spring. The work in Dr. Sherr's laboratory focuses on how environmental pollutants affect the immune system. As he explained to us nonscientists, the human immune system is responsible for fighting off infection by viruses, bacteria and fungi and for destroying newly transformed cells, i.e., cancers, before they gain a foothold in the



host. Unfortunately, a number of common pollutants (e.g., PCB, dioxin, pesticides) profoundly suppress the immune system. In particular, Dr. Sherr's group studies how aromatic hydrocarbons inhibit the development of lymphocytes, the cellular soldiers of the immune system. These hydrocarbons are commonly found in smoked or charcoal-broiled foods, cigarette smoke and gasoline engine exhaust. The ubiquity of these compounds is exemplified by an EPA report indicating that industrial smoke is responsible for the introduction of approximately 800 tons of just one type of aromatic hydrocarbon into the air over the U.S. each year. Perhaps not coincidentally, immunosuppressive hydrocarbons are potent carcinogens. Thus, in a kind of double jeopardy, pollutants can induce cells to become cancerous while suppressing the immune defense system. Interestingly, hydrocarbons suppress immunity at extremely low doses, i.e., doses significantly lower than those at which they induce cancer. Thus, immunosuppression is a more sensitive readout of the deleterious effects

of pollutants than carcinogenesis. A goal of Dr. Sherr's laboratory is to employ techniques in molecular engineering and immunology to learn how these undesirable effects are mediated and to design rational strategies for blocking these effects. A spinoff of these studies could be the development of novel strategies for downregulating overactive immune responses such as those observed in autoimmune diseases or in allergy.

In March, Les Boden was invited to testify before both the California Senate and Assembly on the preliminary results of his study of the costs of medical expert evaluations (so-called "medical/legal exams") in California and three other states. This testimony showed that California spent 5-10 times as much as the other three states on these exams. It helped lead to the passage of Senate Bill 31, which was signed by Gov. Wilson on April 3. If properly implemented, the legislation could reduce medical/legal fees by about \$500 million annually.

Pat Foster recently received a three-year grant from the American Cancer Society to continue her studies on the mechanism of mutagenesis in E. Coli.

Dick Clapp (DSc Epi '89) will be spending more time at BUSPH, while continuing to direct the Center for Environmental Studies at John Snow Inc. He is involved in Dave

Ozonoff's grant from ASPH/CDC/ATSDR to investigate the health effects on populations living near Dept. of Energy hazardous waste sites. In August, Dick taught a two week course in environmental epidemiology to University of Cape Town students in South Africa. Last heard, Martin Van Zyl ('90), department head of Peninsula Technikon in South Africa, was going to participate in the program. Dick mentioned that Martin has been instrumental in the planning and development of a new school of public health at the University of the Western Cape.

Tony Robbins has been appointed director of the National Vaccine Program for the US Department of Health and Human Services.

### Epidemiology and Biostatistics

The results of the Boston Lead-Free Kids Study were published in the Journal of the American Medical Association in April. Co-investigator Ann Aschengrau remarked that "although the results may raise the question of whether the high cost of soil abatement is justifiable, a cost-benefit analysis is necessary to determine which interventions work best for children with low, moderate and high levels of lead exposure."

Herb Kayne was invited to teach a continuing education course in biostatistics to cardiologists at

the University of Indonesia School of Medicine in August. A standard deviation of the route to beautiful Bali is planned.

In March, Janet Lang was named to the editorial board of Epidemiology.

### Health Law

**Energized...** George Annas and Leonard Glantz were awarded \$265,000 from the Department of Energy to study genetic privacy policies for DNA data banks from the Ethics, Law, and Social Policy Program of the Human Genome Project.

**Recent Publications:** From Oxford Univ. Press- George Annas wrote Standard of Care: The Law of American Bioethics published in April. Michael Grodin and Leonard Glantz have just completed Children as Research Subjects: Science, Ethics and Law due out this fall. New England Journal of Medicine articles: authored by Annas- "Physician Assisted Suicide: Michigan's Temporary Solution," (May 27); "Control of Tuberculosis- The Law and the Public's Health," (Feb. 15); and one by Wendy Mariner, "Problems with Employer-Provided Health Insurance- The Employee Retirement Income Security Act and Health Care Reform," (Dec. 3, 1992). Michael Grodin recently published an article in the American Journal of Public Health entitled, "Religious Advance Directives: The Con-

vergence of Law, Religion, Medicine and Public Policy.”

### **Committee commitments:**

Wendy Mariner served as a member of the Institute of Medicine's Study Committee on the Children's Vaccine Initiative. As a member of the American Bar Association Working Group on Health Care Reform, she prepared a white paper on "Legal Implications of Outcomes Assessment." Annas, Mariner, and Grodin participated in Sen. Edward Kennedy's Policy Forum on Health Care Reform held in Boston on April 5; Annas led a working group and prepared a white paper on patients' rights.

**Awards:** In June, George Annas received the National Health Law Teachers Award from the American Society of Law, Medicine, and Ethics.

## **Health Services**

**Setting a president...** Gail Douglas ('89) has been elected vice president of the Mass. Public Health Association and is on track to be president in 1994-95. (Joining MPHA takes only a phone call-617/524-6696.) She has been particularly outspoken lately- as commencement speaker for Mass. Bay Community College on May 28 and as the keynote speaker at the National Conference of Gerontological Nurse Practitioners on April 16, "The Cutting Edge of the New Paradigm: Will

You be There?" Douglas, Whitney Robbins ('88), and Chris Paal, Health Services Department administrator, have an article coming out in Public Health Nursing on "Beyond Rhetoric: Building on Achieving Community Consensus in the Planning and Development of a Nurse-Midwifery Education Program." Advise and content... Douglas is also an advisory committee member of the Boston Dept. of Health and Hospitals Birth Center and the Hebrew Rehab's Memory Loss Project: Alzheimer's Disease, as well as a member of the Mass. Nursing Association's legislative cabinet which reviews all impending health care legislation.

Alan Sager missed his first graduation in ten years but he had a childish excuse: Second son, Matthew David, arrived home. Both Matt and older son Josh have the same birthday, May 3; Dad maintains that they will have equal access to their own quality birthday cake while keeping party costs down.

Sager and co-principals Debbie Socolar ('89) and Peter Hiam have been continuing to work on the Access and Affordability Monitoring Project's studies of health care cost and coverage in Mass. They have found that medical meltdown menaces Mass. medicine. They are working now to show why this is likely to happen, what has caused it, and what can be done to preserve the fine health services on which we depend

and to keep them affordable for everyone. Some of the early findings have been published; more reports are due out this year. WBZ-TV used AAMP analyses in their study of the effects of national health reform on Mass. and filmed discussions in HS 735 Health Care Finance.

Is baseball raceball? Sager and Arthur Culbert, associate dean at BUSM, wrote a paper on why major league baseball teams relocate, finding that the racial make-up of the neighborhood around the stadium is the most important predictor. They presented their findings in June at the annual Cooperstown Symposium on Baseball and American Culture.

Lisa Paine, director of the nurse-midwifery education program, has completed her work with the National Commission on Nurse-Midwifery Education. Results of this work were published in the Executive Summary entitled, "Educating Nurse-Midwives: a Strategy for Achieving Affordable, High Quality Maternity Care." Paine is also a member of the HSRA Advisory Group on workforce projections of Nurse-Practitioners and Nurse-Midwives.

The department's Medicaid Working Group, funded by the Robert Wood Johnson Foundation and the Pew Charitable Trust, has been designing and implementing demonstration managed care systems for people with chronic disabilities and

AIDS. The group has chosen Wisconsin, Florida, and Ohio to set up demonstration projects. On June 3 and 4, the Medicaid Working Group brought 70 Medicaid directors, health care providers, policy makers, and consumers from FL, OH, and WI to Boston to explore issues and problems in designing managed care systems. As a result of the meeting, the Group will produce managed care manuals from consumers', policy makers', and providers' perspectives for use in developing and implementing managed care systems.

### Social and Behavioral Sciences

**Commencing with...** Dan Merrigan who was invited to give the commencement speech on May 19 at St. Louis University, the newest school of public health.

Last fall, Lee Strunin was awarded a National Institute of Alcohol Abuse and Alcoholism grant to study drinking, sex, and HIV risk among black adolescents. The study will utilize ethnographic, open-ended interviews with adolescents to explore whether there are differences in perceptions of risk for HIV infection and sexual and drinking behavior among two groups of black adolescents: African-American and Haitian. "We have adapted a cultural identification scale used with other minority groups of adolescents and we have designed an

ethnographic interview guide for interviewing the 300 kids from Boston. The purpose of the project is to create a knowledge base on black adolescents' drinking behaviors and sexual patterns that put them at potential risk for HIV infection." In the spring, Strunin gave a presentation on adolescent risk behavior at a UC San Diego conference on HIV and Alcohol Impairment: Reducing Risks. In May, Strunin was an invited member of NIAAA's Alcohol and AIDS working group to determine current research and future directions.

**Operation HELPed...** Twenty-five ninth grade students from New Bedford participated in a mini public health program, Operation HELP, run by BUSPH in collaboration with the New Bedford Mayor's Drug Free Community Partnership and School District. Working with Jonathan Howland ('84), Ronda Zakocs ('92) organized sessions on relevant topics that were held

every Friday afternoon from Feb. 26 through May 21 at New Bedford High School and culminated in a graduation ceremony at BU on May 28. Among the presenters were Anne Bishop ('90) who spoke on youth violence and Ilana Morrissey ('93) who discussed HIV/AIDS and substance abuse: immune suppression. Students were given the opportunity to think of ways to help solve health problems that affect them and their community, and to learn about health career options.

### Center for International Health

**Project profiles...** CIH staff will be travelling periodically to Jamaica for the next year as they continue gathering data for a health sector quantitative and qualitative analysis to set the framework for specific policies such as developing policy options for treatment of end stage renal disease and cardiac



*School spirit... New Bedford High students present Ronda Zakocs with a school sweatshirt and cap.*

care. Because of the newly elected Jamaican government, working with the Ministry of Health has been especially exciting at this time.

**From paper to people exchange...** The five-year University Linkage Project with Tribhuvan University in Kathmandu, Nepal, initiated by Catherine Schlager, associate director, Amanda Reed, senior associate, and Sarah Degnan Kambou ('84), former deputy director, is underway. SPH student, Jayne Craycroft, is participating in the student exchange this fall. The project, funded by USAID, aims to strengthen programs at both schools and address the delivery of primary-care services in resource-constrained environments. Research and teaching opportunities for faculty on family planning issues and in the community diagnosis program are available.

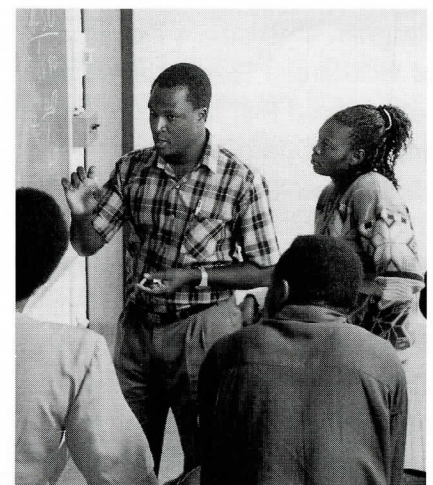
**Staff sojourns...** Mike Trisolini is consulting on clinic management in New Hampshire. Rich Feeley was in Madrid in July as a financial consultant to the World Psychiatric Association. Mike Devlin is off to Asia to market to market in September. CIH staff are looking forward to field training in Haiti and Indonesia next year and developing case studies out of earlier work in Egypt around group practice in the Faculty of Medicine at Suez Canal University and one of the major mosque clinics in Ismailia. Vaira Harik from the

SPH Data Coordinating Center has been hired to take on data analysis responsibilities as well as some overseas work.

**Student mailbag...** Lumbwe Chiwele ('84) has moved from the Ministry of Health in Zambia to executive director of the newly formed Chainama Hills Hospital Board of Management. The new board consists of the psychiatric hospital and the College of Health Sciences where clinical officers and health assistants are trained. Dr. Chiwele's responsibilities include reviewing and establishing training programs for health workers and transforming the hospital from a referral psychiatric hospital to a general hospital—a challenging task. In March, At the behest of Hope Phillips ('92), John Paxman consulted on strategizing issues in family planning for a World Bank project in Zambia. On April 28, U Ki Soe ('91) was made the director general of the Planning and Statistics Department of the Myanmar Ministry of Health.

**From the PC desk...** Suzi Bouveron ('91) is busy with women in development work and the national AIDS program as she continues her Peace Corps work in Gabon. Susan Graham ('90) finished her Peace Corps assignment in Cameroon in February and stayed on for a six-month consultancy contract with UNICEF working on a guinea worm eradication project. After a year in the field as an adjunct primary health care coordinator

for the Peace Corps in Cameroon, Ruby Spicer ('90) started work for the department of Statistics and Planning in the provincial capital of Ngaoundere. Pam Stephenson ('92) wrote a long letter from her Peace Corps assignment in the remote village of Tabia in the Middle Atlas mountains of Morocco. She is part of the health and sanitation program "whose goal is to reduce the incidence of diarrheal diseases in rural areas through a two-fold approach: 1. physical improvements such as building latrines and improving wells to assure better access to safe water, and 2. health education—how to use latrines and wells, how diseases are transmitted and how to prevent sickness related to water-borne diseases." They just completed the first phase of the program, which involved meetings with community leaders to solicit their ideas for the health education programs.



*Davis Omanyo from Kenya was one of 70 participants in the Summer Certificate Program in International Health.*

## The Alumni Net Works

### Cradle Rockers



**Carolyn Bottum ('92)** and her husband, Peter Ljutich, became new parents on March 25 with birth of son, Ian Andrew. "See what trouble you get into when you graduate and have free time?" commented Carolyn. Not much free time now for Carolyn since she returned to her full-time job as coordinator of Elderly Health Education with the Elderly Health Unit at DPH.

**Ellen Freedman ('85)** was not wearing her seatbelt when she delivered second son, Ethan Samuel Rayner, another March 25 baby. Older brother Benjamin will be four this fall. Since Ellen is director of the Childhood Injury Prevention Program at Boston's Department of Health and Hospitals, we can rest assured that her entire house and neighborhood is childproofed.

Two pediatric milestones, one personal, the other professional for **George Friou ('87)**. George Quentin Friou the youngest was born on December 23 to George and wife Diana, a PhD student in anthropology and demography at UC Berkeley. The elder George took a four month paternity leave from his job as clinic

manager of the St. Anthony Foundation in San Francisco. The clinic, which provides free care to the homeless and uninsured, has recently received \$300,000 from the Board of Trustees to improve its pediatric services. "We are able to hire a full-time MD and a nurse to do outreach to hotels where the homeless are living."

Botswanan Baby news... **Pinkie Kgabi ('91)** had a boy, Letsile, on January 26. Husband, Ben Magogwe, a bank manager, shares parenting responsibilities. Pinkie is back at work with the Management Development Program for Primary Health Care Workers at the Ministry of Health.

New Ma in PA.... **Dianne McElroy ('83)** resigned last October as vice president at St. Margaret's Hospital for Women in Boston when her spouse was transferred to Pittsburgh where daughter Elizabeth was born on December 3. Dianne is currently a self-employed consultant.

**Monica Nulkar ('91)** sent a photo of her new daughter Avnee ("which means the earth") who was born on January 10. Monica, a community nutrition coordinator for the Second Harvest Food Bank in San Jose, California was talking about a post natal trip to the east coast later this year....

My three sons... an untelevised production for **Michele Pitoniak-Crawford ('87)** and

husband James. Ryan James was born May 14, joining Connor 4 1/2 and Sean 2. "I certainly have my hands full now!"

A quality product for the Sheltons (**Amy Muskin Shelton ('90)** and **Steve ('89)**)- Andrew Muskin Shelton, born on January 15. Steve is assistant administrator for the Branford Hills Health Care Center in Branford Ct., which conveniently has on-site day care for Drew; Amy is a quality communications training specialist for Aetna Health Plans, Aetna Life and Casualty.

.....  
In May, **Virginia Andradas ('91)** increased the percentage of SPH alumnae at Community Research Initiative of New England (CRI). Virginia is the project coordinator of a clinical trial for a new antiviral drug to combat the effects of AIDS.

After graduation, **Tomi Arbogast ('92)** returned to San Diego in search of the perfect job and found it one hour north-east of the city, in Temecula. Her title is community outreach representative for the Temecula Specialty Group at Palomar Medical Center. "My job is to market home care and physicians' services through community education, special events, and networking in the medical community. I put in a lot of hours, but am having a great deal of fun."

Healthy career start for **Jody Bangs ('93)** who is a data coordinator at Boston Dept. of Health and Hospitals' Boston Healthy Start Initiative. Jody works for Karen Power ('86) who is the director of the Office of Health and Vital Statistics for Boston's Department of Health.

The eyes have it... **John Barrows ('89)** was recently promoted to director of programs at the International Eye Foundation, responsible for coordinating activities of vitamin A nutrition/child survival, river blindness, and public health eye care projects in Central America, the Caribbean, Africa, and Eastern Europe. On July 17, all eyes were on John when he joined Judy Johnson, a program analyst for the EPA division of underground storage tanks, in matrimony at the Washington National Cathedral.

Last spring **Nancy Barsamian ('91)** took a three-week leave from her job as a nurse consultant/program review specialist with the USDH, Health Care Financing Administration in Boston to assist two epidemiologists from the Centers for Disease Control and Prevention in conducting a technical review of the Emergency Public Health Information Surveillance System (EPHISS) in Yerevan, Armenia. She had read about the project in MMWR and contacted the author to volunteer her services. USAID and CDC developed this EPHISS to assess and monitor the current health and nutritional

status of residents in Armenia. The surveillance system is monitoring pediatric nutritional status; elderly pensioner health and food security; refugee health; economic and environmental indicators of impending food shortage; and infectious disease and mortality rates. Nancy's work included assessing health care provisions for the pediatric and elderly populations in Yerevan. "I was able to understand how difficult it was to provide health care services without proper resources and knowledge." The instability of the ruble, the privatization of land and businesses, the strain of the blockade due to the war with neighboring Azerbaijan, and the devastation from the earthquake in 1988 which closed the nuclear power plant, the country's main source of energy, have placed hardships on the populace. Back home, Nancy has continued to be involved with the USAID/CDC initiative.

**Medical admits and discharges...** New MPH grads, **Mari Bentley** and **Shan Mohammed** are beginning their medical rounds, Mari at U Mass Medical School and Shan at Case Western Reserve. **Joanne Murren** graduated from the MD/MPH program in May with diplomas in hand and new daughter on hip to begin a three-year residency in pediatrics at Walter Reed Hospital in Washington DC. SPH '89 alums, **John Cloherty** and **Patty Sereno** finished U Mass Medical School and have started their

residencies: Patty's doing family practice at Malden Hospital and John starts his trial by fire- emergency medicine at BCH after one year at Carney Hospital.

A personnel note from **Kathy Betts ('83)** who recently left Medicaid to revitalize the Alternative Work Options for state workers. A member of the Department of Personnel Administration, Kathy is setting up part time, flex time, job sharing and pilot programs. They will also be setting up a program that will allow state workers to volunteer a maximum of two half days in the public school of their choice and receive full pay and benefits for this time.

West coast news from **Marshall Blesofsky ('82)** in Long Beach, California. Marshall is a physician assistant/administrator at McDonnell Douglas Helicopter Company, "reaping the tail end benefits of the military budget." On the weekends, Marshall is a volunteer with the Homeless Organizing Committee, whose mission is to empower homeless people to access services. Marshall continues to be active in occupational and medical/legal issues and writes that he is considering law school.

A July 4th inter-dependence day marriage celebration for **Anne Blumberg ('91)** and Jon Dorfman at her parents' home in Oxford, England. Anne, a health policy analyst at the Rate Setting Commission, and Jon, a self-

employed businessman, scooted up to Scotland for a quick Highland honeymoon fling.

**Jean Cadet ('93)** has headed off to Chicago to begin a family practice residency program with an emphasis on community-oriented primary care at Cook County Hospital. Jean is also a recipient of the American Medical Assoc./Burroughs Wellcome Program for Resident Physicians award. He was honored for the Teen and Health Project, a health promotion and education program he developed for bilingual Dorchester High School students.

**Ron Cavanagh ('87)** has moved from Oregon to south of Yellowstone in Wyoming. Ron is consulting on alcoholism to the Wind River Indian Reservation and working as a medical director for psychiatry and addiction medicine at the Lander Valley Medical Center.

**Christine Clements ('82)** has finished her PhD coursework in social welfare at the Brandeis Heller School and is immersed in her thesis. Her dissertation, which uses WIC program data, is entitled, "Psychosocial Influences on Infant Feeding Among Low-Income Women."

Unfortunately, political unrest in Nigeria cut short the research project that **Ellen Coates ('93)** was working on at the University of Lagos Medical School in Nigeria. Ellen had gone to Nigeria in March to collect data

for a Tufts School of Nutrition nutritional impact study focusing on infants.

A memorable Memorial Day weekend for **Rosemarie Costanzo ('89)** who married Mark Ferri, an international business consultant, on May 29. Ms. Ferri is the director of constituent services at the BU Medical Center Hospital.

**Yvette Desrosiers-Alphonse ('91)** stopped by SPH during her vacation, midway between her two-year Peace Corps assignment in Jamaica. Yvette is a health educator for the Department of St. Catherine, one of 14 parishes, that serves a population of 365,000. Her job runs the gamut- STDs, AIDS, waterborne diseases.... "We're preparing for a possible cholera outbreak.... I have learned that you must be innovative and flexible to work in international health, and be resourceful to get your message across."

**Ginny Ehrlich ('93)** is enjoying her job as comprehensive health education specialist at the Mass. Department of Education. Ginny provides technical assistance and training to school districts for health education and HIV/AIDS programs.

Sleepless in Boston... After finishing a one-year internship at Framingham Union Hospital, **Ike Eriator ('91)** has just started a three-year anesthesiology residency at BUMC.

From Central America to Central Square... Back in Cambridge after 2-1/2 years of public health work in the countryside of El Salvador, **Susan Freireich ('91)** has found that her skills are very much in demand. She has just been hired by The Cambridge Hospital as the coordinator of the Targeted Immunization Action Project. The goal of this project, funded by the state to operate in Cambridge, Somerville, and Chelsea, is to increase the percentage of children who are fully immunized by the age of two. Results of a preliminary study show that in Cambridge only about 65% of children are fully immunized by two; in comparison, in Bangladesh, 62% of the children are fully immunized by that age.

Logistic progression BU style.... It's a one-year anniversary for **David Gagnon ('89)**, BUSPH research data analyst and biostat doctoral student, and **Carla Van Bennekom ('86)**, epidemiologist at the BU Slone Epidemiology Unit. Carla and David were married at the BU Marsh Chapel in August 1992.

**Carla Gale ('91)** was promoted in May to deputy director of the International Rescue Committee's country office in Malawi. Carla has been in Malawi since the fall of '91 and should remain about one more year.

It was no accident that **Sue Gallagher ('80)** was appointed to be the US representative on

the steering committee for the development of an International Society for Child and Adolescent Injury Prevention. The society, whose mission is to promote significant reduction in number and severity of injuries to children and adolescents through international collaboration, will publish a journal, sponsored by the British Medical Association, in the fall of 1994; membership solicitation will begin next January. Sue is the director of the Children's Safety Network at Education Development Center in Newton.

**Susan Greenblatt ('92)** has been in El Salvador since January as a member of a technical team with Aesculapius International. She has been supporting and developing a rural health network and educating people about health issues and their rights to health care.

After five years of practicing M.A. law, **Karin Gregory ('85)** has returned to public health as manager of new programs for the Boston Trustees of Health and Hospitals. She has a variety of responsibilities- project director for Boston Specialty and Rehab Hospital, program development, contract negotiator, and corporate counsel when necessary. Another new hire at BTHH is **Beverly Heinze-Lacey ('87)** who just started as a senior development specialist in the Program Development Department.

Since October, **Sarah Hardy ('92)** has been working as the study coordinator of the Boston Childhood Lead Prevention Program for Boston's Dept. of Health and Hospitals.

On March 1, **Sonia Hauser ('93)** began her new job as the project coordinator for the Breast Cancer Screening Initiative at Boston City Hospital. The project targets low-income women.

When **Michelle Jermyn ('90)** became the director of family planning of Women's Health Services for rural Livingston County, New York in June she also had to make sure her car could handle the challenge. Michelle's responsibilities are vast-from south of Rochester to the Pennsylvania border. She supervises three family planning clinics which provide the only HIV testing site in the county, as well as STD testing, GYN and reproductive needs, outreach/public health education, and comprehensive teen parenting and pregnancy programs. Before accepting this job, Michelle had been the coordinator for the Teen Pregnancy Prevention Program for the Rochester city school district.

Joined together... Last September, **Tammy Jolley ('89)** married her longtime college beau, Carlo Cadet... and in November, Tammy was Joined Together again, this time in employment as a resource specialist in technical assistance for SPH's Join Together project, a national

resource for communities fighting substance abuse. Ms. Jolley-Cadet is identifying and developing resources for community coalitions throughout the country.

**Jan Jurgelon ('91)** relocated to Florida with her husband and found a great job as a research specialist II for Nemours Children's Clinic in Jacksonville. "I am primarily responsible for performing outcome analysis on the satellite clinics that are (and are continuing to be) established throughout indigent areas of rural Florida to provide primary care for needy children. I am also working to set up studies in the satellite clinics that include many of the Healthy People 2000 indicators. The analyses are not only to assess the level of care in these areas, but also to provide recommendations for improvement... I really feel that I'm making a valuable contribution where it is so desperately needed."

A practice made perfect... After five years of practicing law in private law firms, last fall **Judi Kapuscinski ('84)** was hired for the newly created position of special counsel to the president of Newton-Wellesley Hospital. Judi is involved in patient care and employment issues.

In September **Sudha Kotha ('92)** will be celebrating her one-year work anniversary as the administrator of the Prostate Cancer Genetics Clinic at Dana Farber Cancer Institute. In 1994

she'll be celebrating her first year anniversary as the wife of Howard Hu, a physician at Brigham and Women's Hospital, whom she married on June 20.

**Sherrie Krasner ('91)** has set up her own law practice at 52 Temple Place in Boston. She is specializing in probate, disability, and health care law.

**Adam Lebowitz ('92)** appeared in print with "Red Cross and Public Schools Team Up to Teach Kids CPR," published in the recent issue of CPR innovator. Adam is the director of Health and Safety Programs for the Greenwich CT chapter of the American Red Cross and a paramedic for the Norwalk Hospital Mobile EMS.

**Steven Lowenstein ('85)** had his article "Do-Not-Resuscitate Order—What Happens After Hospital Discharge," published in the May issue of The Western Journal of Medicine. Steven is an associate professor of emergency medicine and surgery at the University of Colorado as well as the associate director for the Division of Emergency Medicine at UOC and the director of the Colorado Emergency Medicine Research Center.

.....  
"The Queen really cannot arrive at a public function in a crumpled outfit."

The royal explanation for why Elizabeth II is exempted from England's mandatory seatbelt law, as reported in People magazine.  
.....

After completing a two-year geriatric medicine and dentistry fellowship program at BU, **Andrea Maalouf ('93)** has begun work at the Harvard School of Dental Medicine. As a member of the departments of Oral Diagnosis and Oral Radiology, and Dental Care Management, Andrea is teaching, doing research, and maintaining a clinical practice in geriatric dentistry.

From Zimbabwe to WV... Forwarding address for **Priscah Mujuru ('91)**: 145 Bryan Dr., Morgantown, WV 26505.

Ghana home.... After spending a busy summer as the resident tutor for the Summer Certificate Program in International Health, **Kwasi Nazzar ('93)** returns home to a new job as the district medical officer of health working at the Navrongo Health Research Center in the Upper East Region of Ghana. Kwasi will be working on a project studying the effectiveness of herbal impregnated mosquito bed nets in reducing morbidity and mortality from malaria.

A Hawaiian HI... **Lucy Ndirangu ('91)** reports that all is well with her job as program coordinator in the Child and Adolescent Mental Health Division in the Dept. of Health.

In May **Stephen Oakley ('92)** became the ambulatory manager for the Primary Care Unit and Cambridge Pediatrics at The Cambridge Hospital. Stephen

hopes to continue the projects he began as program evaluator for the Cambridge School Department and remain active in collaboration efforts between the school department and DPH in collecting school health data, including data from the Teen Health Center. Stephen would be happy to hear from students who are interested in this area and might want to develop projects.

An HMOPROMotion for **Stephanie Oddleifson ('88)**... Stephanie is now a senior analyst/project coordinator for the Clinical Management Information Center at Harvard Community Health Plan. Previously she had been a health educator/analyst with the Clinical Support Development Group at HCHP. As a senior analyst, she will play a lead role in study design and analysis for corporate measurement projects.

Congratulations to **Jon Parham ('90)** on his marriage to Dianna Petty Forrest on April 30 in Columbia, South Carolina. Jon is a physician in private practice.

This spring **Munro Proctor ('92)** spent two busy months in northern Cameroon volunteering his clinical and public health services, ("doing what was needed,") to Pius Tih ('92), the medical director of two hospitals and numerous health posts and health centers. Munro arrived in February with medical equipment bought with the \$10,000 he raised for the hospitals. He

treated all sorts of diseases including leprosy and malaria, and gave a talk on the dangers of flies that was translated simultaneously into three languages for the audience of health workers. Munro was most impressed with the well organized health care system that Pius manages. At the end of his stay, Munro travelled to the capital, Yaounde, to represent the Cardiovascular Disease Unit of WHO at the Pan African Society of Cardiology. He is hoping to return to Cameroon, perhaps with several SPH students for four-six weeks, to conduct health surveys in the villages. In the meantime, Dr. Proctor was abroad again, in Oslo in June at the third International Conference on Preventive Cardiology where he presented a paper from the Framingham Children's Study on the association of body fatness in preschool children with the number of hours of TV watched. The research was part of Lynn Moore's epidemiology doctoral thesis.

Swiss Ms.... **Dru Raiford ('92)** accepted the challenge of a one-year epidemiologist position in the Pharmacoepidemiology Research Unit at CIBA-GEIGY in Basel, Switzerland.

We received news from **Brenda Robinson ('91)** in Lilongwe, Malawi where she is a nutritionist with the International Rescue Committee. She is designing and implementing a district nutrition monitoring and surveillance program for Ntcheu, a

drought stricken area in the central region of Malawi. Brenda is involved in food distribution and is responsible for determining which populations have been the most affected by the drought who would then qualify for food rations.

New England winters have melted away for **Jay Rudinsky ('89)** and his wife since they moved to Raleigh, North Carolina last fall. He left Parexel to join Quintiles, another contract research organization. Jay began in the company's management training program and should now be a project manager.

Her husband's new job at the Federal Reserve Board necessitated a move to Washington DC for **Kim Sheets ('93)** this summer. Luckily Kim's job search was successful before the move. She will be a consultant with Solon Consulting Group, helping to develop the public health side of the business; for example, writing proposals and working on community health and immunization projects.

Early this summer, nueva Peace Corps volunteer **Anne Skalicky ('93)** left for Guatemala where she'll be working as a nutrition educator.

In January, **Toni Snow ('86)** became the administrative coordinator for the Center for the Study of Drug Development at Tufts. The center studies the process through which drugs are brought to market. One of her

colleagues is BUSPH alumna, Sheila Shulman ('87), a senior research fellow at the center.

Hospital rotation, from BCH to MGH... In March **Anne Spink ('92)** became a senior clinical data analyst, a newly created position, for the Health Care for the Homeless Program at Mass. General Hospital.

Trip trek... After a two month summer adventure in southeast Asia with her husband, **Evelyn Stein ('91)** will be back in Boston to begin a new job at Dana Farber Cancer Institute where she will be coordinating a comprehensive cancer prevention program with Mass. community health centers. The project is part of DFCI's efforts to expand their community-based programs. Evelyn had been a health policy and education associate with the Latino Health Institute.

New alum, **Lissa Sugeng**, has just started a one-year research fellowship in echocardiography at New England Medical Center.

After completing his assignment with the International Rescue Committee in Malawi, **Yogi Thami ('86)** travelled a bit (visited with Ann-Karin Valle ('85) in Norway) and us in Boston. He was soon unpacking again, this time in Somaliland where he is a health advisor with Save the Children, U.K. Yogi is working with the Ministry of Health to set health policy.

**Lorraine Thompson ('93)** returned home to Belize and was soon hired as the national health officer with UNICEF's Integrated Primary Health Care Program. Lorraine had been a project officer with CARE International.

Motown lowdown... **Marianne Ulcickas ('90)** is working as a clinical epidemiologist at the Henry Ford Hospital in Detroit while finishing her epidemiology doctoral work at BUSPH.

Sun-raise... **Linda Velgouse ('79)** was promoted to executive director for Sunrise at Kensington, a public/private partnership with the housing opportunity commission of Montgomery County, Maryland to develop and manage assisted

living and independent housing and services for mixed income elderly. Linda had been commuting to the other side of DC, where she was the administrator of Lincolnia, an assisted living facility in Fairfax County, VA.

.....

### Student-Alumni Career Connections

Twice since our last issue, alumni have come back to school to lead career information sessions for students. In February, Kathy Harvey ('84), Steve Johnson ('84), and Iris Davis ('84) discussed a variety of environmental health careers; in April, Bobbi Dunn ('90), Ruth Karacek ('90), and Kathy Gallagher ('84) talked about

opportunities in epidemiology. Both sessions were very helpful to students. Career seminars will continue this fall. If you are interested in participating, please call Barbara St. Onge.

### Alumni-Alumni Career Connections

Over 50 people attended the fourth annual networking evening on March 10. Some came bearing job announcements from their employers; others came to read them.

#### Alumni Breakfast

Wednesday, October 13, 8 -10:30 am, BU Castle, 225 Bay State Rd. Guest Speaker: State Representative, John McDonough

A Room Full at the Alumni Networking Evening



## Seen at the Networking Scene

.....



*Lindsay Huppe ('92) and Shaheen Islam ('93) ; Imran Ravji ('92) in back*



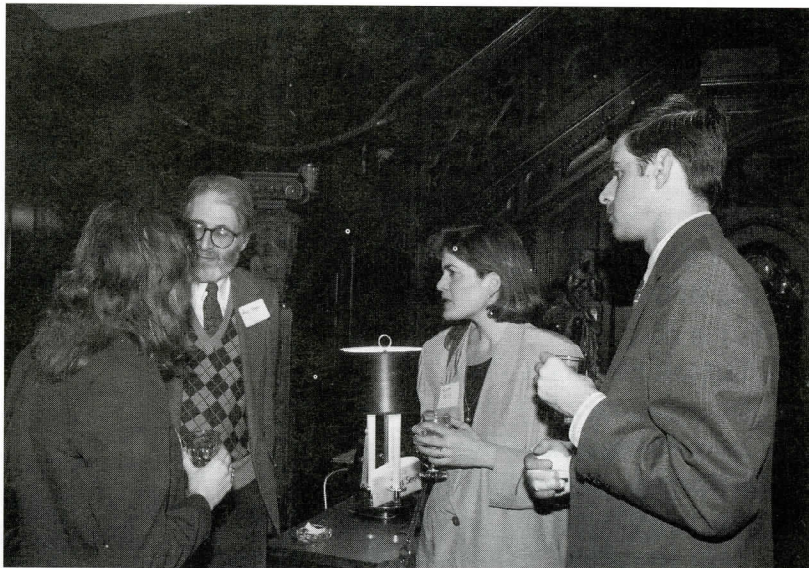
*Roseanna Spizzirri-Creager ('80) and Dr. Bob Meenan*



*(from left), Monique Cohen ('93), Sue Fish ('92), and Anne Blumberg ('91)*



*(from left), Iris Davis ('84), Jacquie Tsay (student), and Alejandro Risquez ('93)*



*(from left ), Evelyn Stein ('91), Prof. Alan Sager, Denise Bury ('91), and Sean Dore ('93)*

## Alumni Student Loan Fund Campaign 1992-1993

We'd like to publicly thank the following alumni for their generous contributions to the Student Loan Fund. As of June 30, the total balance of the Loan Fund was \$280,698.33, all of which has been loaned out to students.

\* denotes a contribution of \$100 or more.

Josie (Biblo) Alderman ('81)  
 Dan Alford ('86)  
 Shelley Allison ('84)  
 Barbara Alpert ('79)  
 Davida Andelman ('84)  
 Mickey Aramati ('86)  
 Maria Arostegui ('81)  
 Sue Babin ('79)  
 Sarah Bachrach ('84)  
 Diane Baker ('90)  
 Cynthia Barber ('89)  
 Anita Barry ('88)  
 Patricia Barry ('87)  
 Tanya Becker ('89)  
 Gerry Berenholz ('79)  
 Cheryl Berglund ('89)  
 Toby Bernstein ('86)  
 Kathy Betts ('83)  
 Mary Bevis ('90)  
 Robert Bienkowski ('85)  
 Rick Bird ('83)  
 Tris Blake ('79)  
 Kevin Blank ('82)  
 Marshall Blesofsky ('82)  
 Nancy Bloom ('87)  
 Cathy Bokoanska ('84)  
 Dorothy Bowring ('89)  
 Tom Bradley ('85)\*  
 Peggy Brantley ('83)  
 Shari Brenner ('87)  
 Sally Brown ('82)  
 Kathy Butterfield ('90)

Jim Byrd ('85)  
 Howard Cabral ('86)  
 Sharon Cagen ('85)  
 Eileen Carr ('90)  
 Betty Callens ('90)  
 Judy Cannon ('79)  
 Margaret Casey ('89)  
 Gwladys Caspar ('80)  
 Sandy Chelton ('86)  
 Marisel Chibas ('87)  
 Don Chipman ('84)  
 Dick Clapp (DSc '89)  
 John Cloherty ('89)  
 Ava Clough ('87)  
 Bill Coady ('88)  
 Jennifer Cochran ('87)  
 Rudy Coleman ('80)\*  
 Kathy Coltin ('81)  
 Claire Connor ('80)  
 Linda Connor ('91)  
 Tricia Cook ('81)  
 O'Dea Coughlin ('79)  
 Roseanna Creager ('80)  
 Connie Cremens ('83)  
 Charlotte Crowder ('83)  
 Karen Currie ('89)  
 Debbie Curtis ('83)  
 Jeanne Daly ('82)  
 Iris Davis ('84)  
 Hamid Davoudi ('89)  
 Sally Deane ('88)  
 Carolyn DelGuercio ('91)  
 Strat Demetriou ('89)\*  
 Laura Derby ('85)  
 Mike Devlin ('87)  
 Kevin Donahue ('79)\*  
 Maureen Doran ('90)  
 Gary du Moulin ('80)  
 Pat Edraos ('79)  
 Priscilla Elliott ('90)  
 Teresa Ferrara ('85)  
 Rosemarie Ferri ('89)  
 Russ Fleischer ('90)\*  
 Karen Freund ('89)  
 Georgina Friedenberg ('82)  
 George Friou ('87)  
 Kathy Gallagher ('84)

Paula Gallagher ('86)\*  
 Susan Gallagher ('80)\*  
 Joseph Gately ('90)  
 Donna Gatti ('88)  
 Deirdre Gavin ('88)  
 Mary Gervino ('90)  
 Deborah Glotzer ('90)  
 Mary Goldberg ('81)  
 Susan Goldberg ('84)  
 Paula Goldman ('84)  
 Susan Goldman ('81)  
 Bob Goldstein ('90)  
 Sandy Goodenough ('81)  
 Brigid Goody ('86)  
 Barbara Graves ('84)  
 Karin Gregory ('85)  
 Martha Groton ('89)  
 Gloria Gutwirth ('82)  
 David Haldeman ('81)  
 Floyd Hardwick ('79)  
 Kathy Harvey ('84)  
 Judy Hauser ('88)  
 Pat Hazelton ('83)  
 Dana Haseotes ('85)  
 Eileen Hegarty ('83)  
 Elizabeth Heintz ('87)  
 Jennifer Hermann ('88)  
 Nicholas Herold ('92)  
 Judy Hindman ('80)  
 Dory Holmes ('85)  
 Betty Hong ('87)  
 Samuel Ihemdi ('85) and  
 Hania Dawani ('86)\*  
 Sally Jenks ('83)  
 Genita Johnson ('88)  
 Steve Johnson ('84)  
 Tammy Jolley-Cadet ('89)  
 Ruth Karacek ('90)  
 Robert Katz ('83)  
 Holly Kazan ('84)  
 Dorothy Kelly-Flynn ('86)  
 Jeanmarie Kent ('89)  
 Mary Ellen Keough ('80)\*  
 Ruth Kleinrock ('79)  
 Tom Kloss ('88)  
 Pat Kludt ('88)  
 Laurie Kunches ('83)

Susan Kurth ('88)  
 Joan Lane ('80)  
 Lee Lanza ('80)  
 Colette Lavoie ('81)  
 Adam Lebowitz ('92)  
 Crystal Leslie ('83)  
 Suzette Levenson ('84)  
 Paula Levin ('79)  
 Tomas Lichauco ('87)  
 Kylie LLoyd ('90)  
 Manlio LoConte ('79)  
 Magnus MacAuley ('79)  
 Mitsou MacNeil ('84)\*  
 David Mailhot ('84)  
 Shelley Mains ('90)\*  
 Debra Martone ('86)  
 Betty Mathieu ('81)  
 Margaret McCabe ('85)  
 Helen McCormack ('83)  
 Sandra McCormack ('81)  
 John McDonald ('82)\*  
 Joyce McKenney ('83)  
 Bernadette McKinsey ('89)  
 Susan McLaren ('82)  
 Kathleen McQueen ('88)  
 Barry Menkes ('81)  
 Barbara Miller ('83)  
 Chris Mitchell ('88)  
 Ruth Montgomery ('80)  
 Susan M. Murray ('83)  
 Karen Nemeth ('81)  
 Doreen Nicastro ('89)  
 Sheila Noone ('86)  
 Lois Nunez ('82)  
 Mary O'Brien ('84)  
 Gerry O'Connor (Dsc '87)\*  
 Kathleen Oates ('81)  
 Stephanie Oddleifson ('88)  
 Susan Oliveria ('89)  
 Frannie Osman ('85)  
 Susan Paadre ('87)  
 Marilynn Paine ('88)  
 Julie Palmer ('85)  
 Jon Parham ('90)\*  
 Louisa Bell Paushter ('90)  
 Beverly Pavasaris ('83)  
 Marie Perry ('81)\*

Larry Phillipps ('85)  
 Virginia Phillips ('87)  
 Deb Picciuto ('85)  
 Joan Pierce ('91)  
 Elaine Poirier-Elliott ('85)  
 Lisa Raiola ('91)  
 Laura Rice ('90)  
 Sheryl Rimer ('82)  
 Jeannine Rivet ('81)  
 Rosario Rizzo ('84)  
 Nancy Raccio Robak ('91)  
 Maggie Robbins ('88)  
 Whitney Robbins ('88)\*  
 Donna Robinson ('90)  
 Denise Rojas ('90)  
 Michael Rosenblatt ('89)  
 Nancy Sandrof ('84)  
 Linda Saunders ('84)  
 Alice Schori ('83)\*  
 Freda Scotch ('80)\*  
 George Seage (Dsc '91)  
 Bill Segal ('78)\*  
 Debra Shapiro ('87)  
 Amy Shelton ('90)  
 Steve Shelton ('89)  
 Gary Shostak ('81)  
 Sheila Shulman ('87)\*  
 Melanie Simons ('90)  
 Kent Smith ('81)\*  
 Leslie Spaneas ('89)  
 Michele Stakutis ('89)  
 Jane Steckowych ('87)  
 Linda Suttentfield ('86)  
 Elise Tamplin ('87)  
 Evelyn Thomas ('89)  
 Ralph Timperi ('83)\*  
 Andrew Ting ('91)  
 Thelma Tisdale ('90)  
 Dina Traniello ('84)  
 Barbara Noel Tuthill ('82)\*  
 Patricia Twombly ('81)  
 Carka Van Bennekorn ('86)  
 Linda Velgouse ('79)  
 Chris Vincze ('85)  
 Kristen Volk ('81)  
 Stanley Wainapel ('89)

Rob Wald ('84)  
 Karen Walega ('88)  
 Nader Wassef ('84)  
 Judy Hearst Wei ('80)  
 Bob Wheaton ('85)  
 Betsy Whitcomb ('86)  
 Dick Whitman ('90)  
 Susan Wilson ('83)  
 Sheila Wilson ('91)  
 Marvin Wool ('82)  
 Beth Yudkowsky ('86)  
 Peter Zuromskis ('83)

.....

The Fifteenth  
 Anniversary  
 Celebration of  
 Boston University  
 School of  
 Public Health will  
 be happening  
 next spring.

Watch for  
 announcements.

## SPH Alumni Board Members

.....  
Kathy Gallagher ('84),  
*president*  
Iris Davis ('84), *vice-president*  
O'Dea Coughlin ('79),  
*secretary*

Mickey Aramati ('86)  
Mary Bevis ('90)  
Marisel Chibas ('87)  
Ruth Karacek ('90)  
Mary Ellen Keough ('80)  
Mary O'Brien ('84)  
Laura Rice ('81)  
Rob Wald ('84)

.....

***SPH Alumni News*** is  
*published twice a year by  
Boston University School  
of Public Health.*

*Send all news and notes  
(job, family, address  
changes) to  
Barbara St. Onge,  
BUSPH,  
80 E. Concord St.,  
Boston, MA 02118.  
Tel: 617/638-4640  
Fax: 617/638-5299*

.....

*Boston University's policies provide  
for equal opportunity and affirmative  
action in employment and  
admission to all programs of the  
University.*

Commencement- May 16

.....



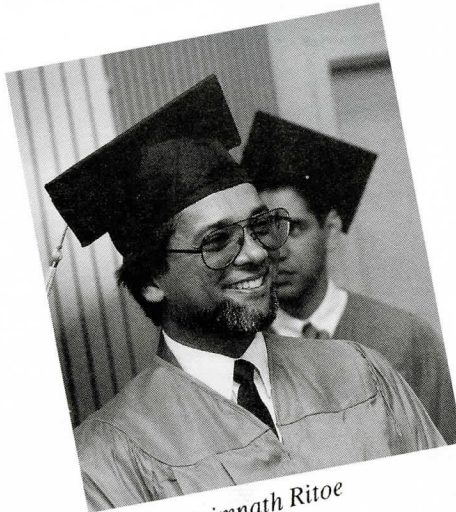
*(from left), Dr. Dave Ozonoff with new epidemiology doctor of science grad, Yuqing Zhang*



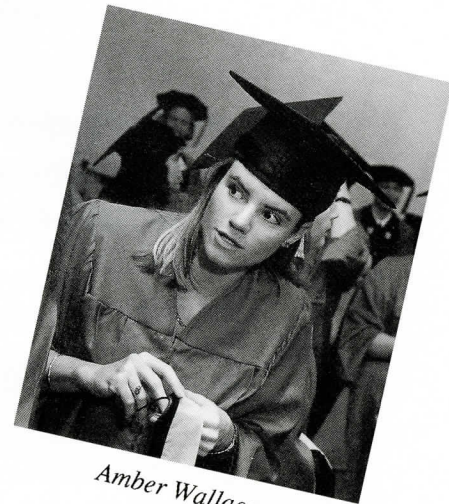
*For three's a jolly good COPC fellows... (from left), Jean Cadet, Brianne Fitzgerald, and Sal Molica.*



*Andrea Rudolph*



*Primmath Ritoe*



*Amber Wallace*



*The ceremony commences.*

Boston University  
School of Public Health  
80 East Concord Street  
Boston, Massachusetts 02118

---

Non Profit Org.  
U.S. Postage  
**PAID**  
Boston, Mass.  
Permit NO. 56031

---