

**Boston University**

**OpenBU**

<http://open.bu.edu>

---

BU Publications

Impressions

---

2002

# Impressions: 2002 Fall

---

<https://hdl.handle.net/2144/21980>

*"Downloaded from OpenBU. Boston University's institutional repository."*

BOSTON UNIVERSITY  
*Goldman School of Dental Medicine*

|impressions|

fall 2002

CELEBRATING OUR ACHIEVEMENTS



It gives me great pleasure to join in the celebration of two important milestones for the Goldman School of Dental Medicine:

highly innovative approaches to teaching both undergraduate and postgraduate students. Its simulation laboratory for training on virtual patients provides invaluable preparation of students prior to their actual clinical experiences with patients. In addition, educational materials for the students have been made easily accessible to them as a result of the adoption of a digital textbook system and the use of the intranet to provide course materials developed by faculty and to facilitate discussions between students and instructors outside the classroom.

Research at the school has grown rapidly with more than a fourfold increase in grant awards in just a decade. The research is broad based, ranging from the most fundamental investigations in genetics and molecular and cell biology to clinical investigation, epidemiology, and health services research. The current ranking of the school in the top echelon of dental schools in funding from the NIH represents a remarkable achievement. Moreover, the school has pioneered the development of

the fortieth anniversary of its founding and the twenty-fifth anniversary of its illustrious dean, Dr. Spencer Frankl. Despite its relatively brief period of existence, the school has developed into one of the finest dental schools in the world. It has moved to the forefront in the area of dental education with the introduction of modern and

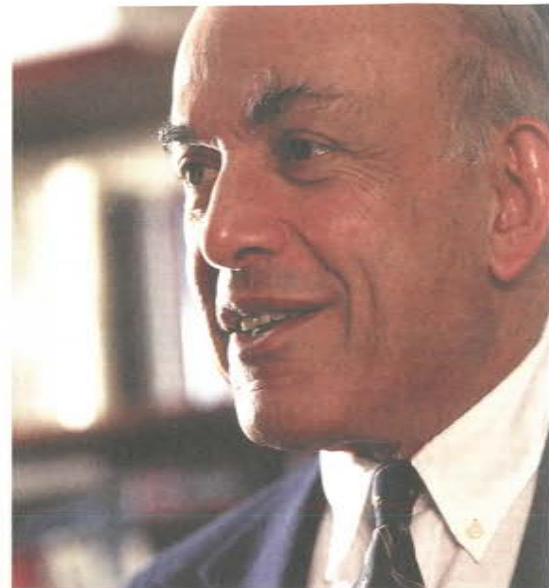
new clinical programs to provide dental care for the underserved and poor in the Greater Boston area, including the diagnosis and treatment of patients with HIV infections. The clinical network that the school has established for this purpose has also proven invaluable for the clinical training of students.

None of these achievements would have been possible without the leadership of Dr. Spencer Frankl. His vision for the school, his focus on academic and clinical excellence, his ability to recruit and retain superb faculty to work closely with him to advance the goals of the school, and his successful approaches that have provided financial stability for the school have been instrumental in bringing the school to its current level of excellence.

Dean Frankl is a modest and unassuming individual who is a wonderful colleague and friend. It has been a pleasure to work with him during the past several years. I congratulate him on both anniversaries and thank him for his many contributions to our Medical Campus and the University, and to dental medicine as a whole. As a result of his work and that of the faculty and staff, the future of the Goldman School of Dental Medicine is indeed bright.



Aram Chobanian, MD  
Provost, Boston University Medical Campus  
Dean, Boston University School of Medicine



# impressions

impressions : fall 2002

## issue

### IMPRESSIONS

*A publication for the  
alumni and friends of  
Boston University Goldman  
School of Dental Medicine*

### DEAN

Spencer N. Frankl,  
DDS, MSD, FACD, FICD

### EDITOR

Christine McDonald,  
*director of communications*

### ASSOCIATE EDITOR

AND SENIOR WRITER  
Mari Megias,  
*communications specialist*

### CONTRIBUTORS

Ivy Nagahiro,  
*development officer*

### DESIGN

Stoltze Design  
[www.stoltze.com](http://www.stoltze.com)

### PHOTOGRAPHY

Kent Dayton

Send correspondence  
and address changes to:  
Editor, *Impressions*,  
Boston University  
Goldman School of  
Dental Medicine, 100 East  
Newton Street, Suite 317,  
Boston, MA 02118

PHONE 617/638-4891

FAX 617/638-4895

EMAIL [cmcdon@bu.edu](mailto:cmcdon@bu.edu)

## 2 — 1963/2003

*A retrospective glance at our world and community*

## 6 — Ask the Dean

*What would you ask the dean if you could?*

## 8 — 2002 Henry Goldman Symposium

*Highlights from this year's biennial symposium*

## 10 — A Tradition of Philanthropy

*Celebrating the ongoing generosity of our donors*

## 12 — Profiles: 40 Years of Alumni

*Four alumni, four decades, four perspectives*

## 14 — Alumni News

## 16 — The Last Word

*BU Chancellor John Silber reflects on this dual anniversary*

# 1963 / 2003:

## A retrospective glance

## at our world and our community

As we remember from where we came, and rejoice in where we are, the following facts should add perspective to our journey.

Dental Clinic in the basement of the Talbot Building



NOV

Boston  
Gradua

(N. Y. Times-Chicago Tribune Service  
Boston, Nov. 5—Boston U  
version has established a gr

First in Nation

BU School of Graduate Dentistry

First dental school in USA devoted exclusively to postgraduate study

45 postdoctoral students

World population:  
3.2 billion

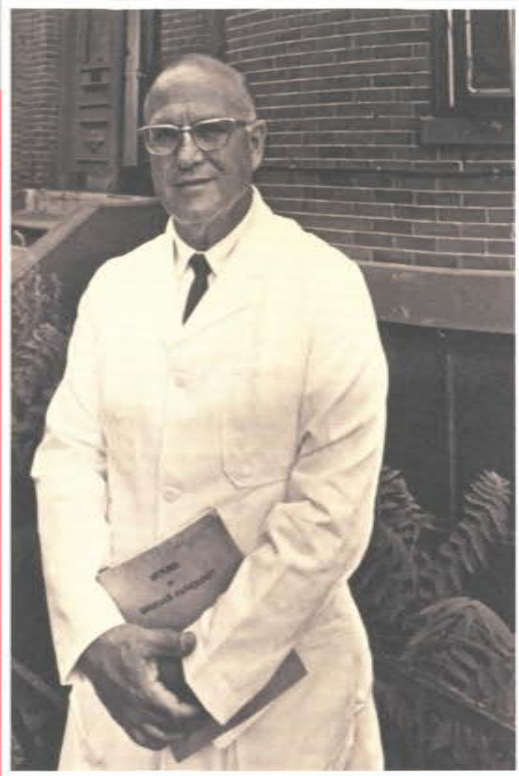
BU alumnus Martin Luther  
King was Time magazine's  
man of the year

The Beatles top  
the charts

Michael E. DeBakey  
implants first artificial  
heart in a human being  
at a Houston hospital

Life expectancy  
for Americans:  
69.9 years

Cost of mailing a  
letter: \$.05



Dr. Henry Goldman, 1963

# Grad School South End

Enrollment will be limited to 100 students. The school will be at the Medical Center's South End campus.

The program will offer full-time courses leading to a master of science degree in dentistry. Also included will be workshop and refresher courses for dentists, a training



Oral Pathology Laboratory



Sixth-floor Laboratory



The Talbot Building, 1963

2 full-time faculty | 16 volunteer faculty | Basement of Talbot building, 1 floor, 5,000 square feet | \$125,000 operating budget

LA Dodgers defeat NY Yankees in World Series

Average cost of three-bedroom home: \$15,000

Black-and-white television with three channels

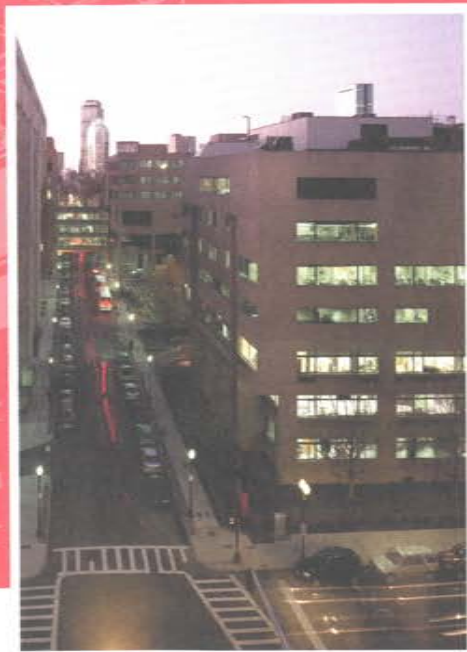
Percentage of first-year dental students who were women: 1.5%

Three most populous states: New York, California, and Pennsylvania

U.S. population: 203 million



Dean Spencer Frankl



BU Goldman School of Dental Medicine—100 East Newton

# 1963 / 2003:

For 40 years, Boston University Goldman School of Dental Medicine has shaped anew the teaching and practice of dentistry throughout the world

BU Goldman School of Dental Medicine	110 full-time faculty 85 half-time faculty 130 volunteer faculty	Digital curriculum and evaluation	4,000+ alumni worldwide	\$8 million in research grants annually	2 dental insurance plans
--------------------------------------	--	-----------------------------------	-------------------------	---	--------------------------

<i>World population: 6.16 billion</i>	<i>U.S. college and university enrollment: 15 million</i>	<i>Genetic mapping, human genome project, and cloning</i>	<i>Percentage of U.S. households with Internet access: 60%</i>	<i>Average cost of a new home in the United States: \$175,000</i>
---------------------------------------	---	---	--	---



### PARTNERS

BUSDM's many community partnerships help provide oral health care to a diverse population in the Boston area. Our commitment to our community led the Robert Wood Johnson Foundation to select BUSDM as a recipient of a \$1.35 million grant to expand access to care to underserved populations through community partnerships.

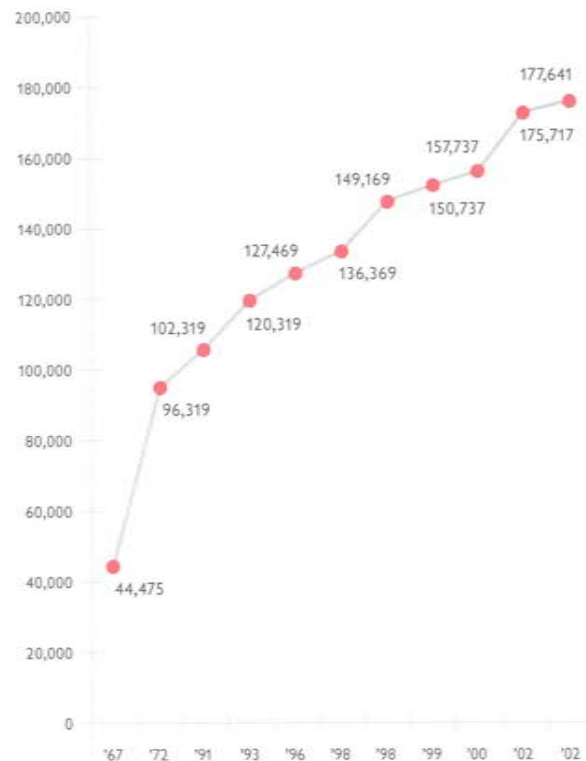


### SITES

An invaluable component of the education of BUSDM students is their immersion in experiential learning through the school's Applied Professional Experience (APEX) and Externship Programs. With many diverse sites throughout New England and beyond, the APEX and Externship Programs expose students to dental care in a variety of community settings.

- APEX SITE
- EXTERNSHIP SITE

### BUSDM GROWTH IN SQUARE FEET



### BUSDM RESEARCH AWARDS

YEAR	COUNT	AMOUNT
1992-93	14	\$1,712,866
1993-94	17	\$2,108,025
1994-95	26	\$2,830,181
1995-96	27	\$3,222,311
1996-97	44	\$4,379,248
1997-98	40	\$5,779,452
1998-99	50	\$6,087,475
1999-00	43	\$6,933,740
2000-01	51	\$7,081,197
2001-02	41	\$7,972,554
<b>TOTAL</b>	<b>294</b>	<b>\$36,157,145</b>

Ranked among the top leaders in dental education in amounts of research funds awarded by the National Institutes of Health

480 DMD students  
186 postdoctoral students  
12 postdoctoral programs

180,000 square feet of space in ten locations

\$50,000,000 operating budget

Over 100 community screenings per year

Reality, digital, high-definition, and satellite television

Percentage of female dental students: 52%

Three most populous states: California, Texas, and New York

US population: 286 million

# ask the dean

What would YOU ask the dean of our school if you could? Here are a few choice questions solicited from faculty and staff about dental education, care, research, and the future of dental medicine.





*Q: What effect will new and emerging research have on dental education and practice?*

A: We can readily acknowledge that basic research is rapidly evolving towards the molecular level. One of the most exciting prospects and challenges is the sequencing of the human genome and genome of most human pathogens. The completion will allow a more comprehensive analysis of disease mechanisms and will produce complementary information from various biomedical fields that could be relevant to different diseases, including those occurring in the oral cavity. Primary basic research findings are being applied in the clinical setting. Even now, molecular biological methods are being used in the selection of a specific antimicrobial therapy, and for assessing the genetic risk for periodontal disease. Certainly, tissue engineering and gene therapy are leading areas of biomedical research and both will in time have the potential for major clinical impact. Also, the applications of gene therapy and the use of bioengineering in maxillofacial restoration and tooth regeneration are fast emerging and saliva is increasingly promising as an important diagnostic tool. Nanotechnology, a new field of science and technology utilizing molecular motors, shows the potential for the development of an array of new scientific advances with the prospect of new clinical tools and devices. Consequently, a major challenge facing dental education will be the timely introduction of this new science into the curriculum. Although technology transfer can lag behind at times, dental educa-

tion needs to recognize that new science will demand that we respond quickly to the changes and recognize what the impact will be on our students. It will also require that our school be prepared to provide retraining opportunities for practicing dentists who will need to learn new diagnostic and treatment modalities.

*Q: Looking back over the past 25 years you have served as dean, what do you see as the major educational changes you were able to implement?*

A: These past 25 years we have been able to recruit and retain an increasingly outstanding faculty and a talented staff. The positive changes that have occurred at the school have been the direct result of their efforts. The experiential components of our curriculum—the APEX and extramural programs that were initiated in the late 1970s and expanded in the 1980s—have enabled us to implement our shared vision of having a school without walls. As a consequence, our community health programs have become a national model. I believe these service-learning opportunities have provided our students with an important perspective of the health care delivery system that cannot be achieved solely in the dental school setting. Dental medicine is a healing profession and in our community sites students develop a larger sense of themselves and the contributions they are making to the well-being of many of the neediest and most underserved populations. The vision of reaching out to surrounding underserved communities has recently been

acclaimed by the Robert Wood Johnson Foundation with an award to further grow these initiatives while simultaneously increasing underrepresented minorities in our student body. I have seen the quality and diversity of our students grow as they take great pride in their maturing professionalism. Their enthusiasm and commitment to their education is a constant source of personal satisfaction that becomes even greater as I visit with them at alumni and national meetings. Our alumni's increasing contributions to their patients, to the profession, and the school are some of the most important changes I have witnessed—and this reaffirms the role the faculty and school have played in their professional development.

*Q: What changes have occurred in the research mission of the school?*

A: Perhaps the most pervasive change has been in the growth and development of our research capabilities. We had always been strong in our educational and clinical training but not so strong in research back in the 1970s through the mid-1980s. The added emphasis on research that has taken place since has meant a fundamental cultural change in the school. Advances in science and technology at the school have enabled us to rank in the top echelon of research-intensive institutions. Over the past decade, the creation of the departments of Health Policy and Health Services Research, Molecular and Cell Biology, and the Clinical Research Center coupled

with the strengthening of the research faculty in our Departments of Periodontology and Oral Biology, Restorative Sciences, Biomaterials, Pediatric Dentistry, and Diagnostic Sciences have produced a surge of excellent science that has had a major impact in the transformation of the school. The amount and scope of collaborative investigations that are taking place in a variety of interdisciplinary projects by the faculty with their colleagues in the Schools of Medicine and Public Health and the College of Engineering are impressive. Boston University is one of the nation's major research universities and now the School of Dental Medicine has become an integral part of the University's research mission. Indispensable to our evolving science has been the acquisition of additional space to house our growing programs. In 1977 we occupied 90,000 square feet for our operations; in 2002 our classrooms, clinics, and laboratories occupy approximately 180,000 square feet of space, a doubling of our area. Certainly, many other changes have occurred in our educational and clinical programs, our information technology systems, and in our organizational transformation, all of which are worthy of citing. So it's been a very exciting and stimulating 25 years—but I see the future being even more interesting and challenging.



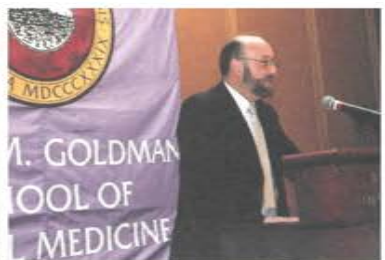
Deans Norris, Frankl, and DePaolo



Provost Chobanian, Mrs. Towle, and Vice President Towle



Dean Frankl and Chancellor Silber



Dr. Jacobson

# the FUTURE of dental

## *The 2002 Henry M. Goldman Symposium*

The 2002 Henry M. Goldman Symposium was held September 21-22, 2002, at the Westin Copley Place in Boston. Sponsored by Boston University Goldman School of Dental Medicine and the school's alumni association, the symposium was held in honor of the school's 40th anniversary and Dr. Spencer N. Frankl's 25th year as dean.

The biennial symposium provided a stimulating educational opportunity for participants to examine exciting advances in oral and systemic health care while celebrating milestones in the school's history. The symposium is named for the school's founding dean, who in 1963 had a vision for an innovative school of dental medicine that endures to this day.

BUSDM was honored to host so many authorities in the field of dental medicine, research and patient care. Expert presentations from near and far included:

- *The Future of Periodontology*, Dr. Robert J. Genco, Distinguished Professor of Oral Biology and Microbiology; Vice Provost for Science, Technology Transfer, and Economic Outgrowth, SUNY at Buffalo
- *Future of Health Care Delivery and Trends*, Dr. Raul Garcia, Professor and Chair, Department of Health Policy and Health Services Research, BUSDM
- *Gene Therapy and Bioengineering in Dentistry's Future*, Dr. Bruce J. Baum, Chief, Gene Therapy and Therapeutics Branch, NIDCR, NIH
- *Saliva as a Diagnostic Tool*, Dr. Frank G. Oppenheim, Professor and Chair, Department of Periodontology and Oral Biology, BUSDM
- *New and Future Paradigms in Periodontology: A Link to Systemic Disease*, Dr. Thomas E. Van Dyke, Professor of Periodontology and Oral Biology, BUSDM
- *Innovations in Orthodontics*, Dr. Anthony Gianelly, Professor and Chair, Department of Orthodontics and Dentofacial Orthopedics, BUSDM
- *Use of Bioengineering in Maxillofacial Reconstruction*, Dr. Laisheng Chou, Professor and Director, Division of Oral Medicine; Professor of Biomaterials, BUSDM; and David Cottrell, Chair, Department of Oral and Maxillofacial Surgery, BUSDM
- *Innovations in Endodontic Treatment*, Dr. John West, Associate Professor, University of Washington School of Dentistry
- *Bioengineering and Tooth Replacement*, Dr. Irma Thesleff, Chair, Finnish Connective Tissue Society; Academy Professor and Research Director, Research Program in Developmental Biology, Institute of Biotechnology, Viikki Biocenter University of Helsinki
- *Dental Biomaterials: Recent Advances and What Lies Ahead*, Dr. Dan Nathanson, Professor and Chair, Department of Restorative Sciences/ Biomaterials, BUSDM
- *The Future of Oral Maxillofacial Implants*, Dr. John B. Brunski, Professor, Department of Biomedical Engineering, Rensselaer Polytechnic Institute
- *The Future of Esthetic Dentistry*, Dr. Robert Ibsen, Clinical Lecturer, Department of Restorative Sciences, BUSDM, and University of Southern California School of Dentistry, Los Angeles; Founder and President of Den-Mat Corporation;
- *Dental Informatics: Challenges for the Twenty-first Century*, Dr. Titus Schleyer, Director, Center for Dental Informatics, University of Pittsburgh School of Dental Medicine



Deans Robinson, Norris, Frankl, DePaola, and Donoff



Drs. Tabak and Hirschberg



Metcalf Professor Delisi, BUSDM Board Chair Marshall Sloane, and Dean Frankl

# medicine

— *Putting Science into Practice: The Critical Role of Dental Schools.* Dr. Lawrence A. Tabak, Director, National Institute of Dental and Craniofacial Research (NIDCR), NIH

— *Future of Dentistry Forum: The Perspective from Dental School Deans.* Dr. Dominick DePaola, President and CEO, The Forsyth Institute; Dr. R. Bruce Donoff, Professor and Dean, Harvard University School of Dental Medicine; Dr. Spencer N. Frankl, Professor and Dean, BUSDM; Dr. Lonnie H. Norris, Professor and Dean, Tufts University School of Dental Medicine; Dr. Peter Robinson, Professor and Dean, University of Connecticut School of Dental Medicine

The deans' panel on the future of dentistry, moderated by Dr. Jeffrey Hutter, associate dean for academic affairs at BUSDM, concluded the two-day event. Leaders of five of the most

respected and admired institutions of dental education gathered to share their views and ideas of what lies ahead for the future of dental medicine and education. These distinguished practitioners, educators, researchers, and leaders discussed the impact of various changes on the future of dentistry and how the schools of dental medicine must respond to the rapidly changing scientific and environmental factors confronting dental education.

The exciting two-day event culminated with a celebratory dinner at which Boston University Chancellor John Silber lauded the school, its founder Henry M. Goldman and Dean Frankl for outstanding dedication, leadership and vision. The following is an excerpt of Dr. Silber's speech: "Beginning in 1963 with colleagues from the Boston University School of Medicine, Henry conceived of and shaped anew the teaching and practice of

dentistry as a part of medicine. He was the architect, builder and financier of a revolution in dental education and dental practice. Before his retirement, Dean Goldman as the Moses who had liberated dentistry selected as his Joshua, Spencer Frankl. The wisdom of that choice is manifest in the progress of the school under Dean Frankl's outstanding leadership over the past 25 years. By his direction and example, the guiding principles of its founder live on in ever fuller realization. Frankl's deanship has been notable for his unrelenting and highly successful efforts to build the research capabilities of the School of Dental Medicine and to integrate its programs into the Boston Medical Center. He has emphasized the pursuit of excellence in advanced medical research and in the compassionate care for patients."

## alumni WEEKEND

MAY 16-18, 2003



CELEBRATING OUR ACHIEVEMENTS

THE 40<sup>TH</sup> ANNIVERSARY OF  
BOSTON UNIVERSITY  
GOLDMAN SCHOOL OF DENTAL MEDICINE  
SPENCER N. FRANKL 25 YEARS AS DEAN

# philanthropy:

n., fi-lan' thre-pe. 1. Effort or inclination to increase human well-being as by charitable aid. 2. Love of humankind in general. 3. Something intended to promote human welfare.

Thanks to Dr. Henry M. Goldman's vision and determination, we now celebrate 40 years as an outstanding institute of higher learning, comprehensive patient care, cutting-edge research, and caring community service.

We would be remiss, however, if we were to overlook Dr. Goldman's unique talent for raising the much-needed funds to help build and maintain our school. In a sense, our entire philanthropic mission was launched when Dr. Goldman sought out close friends and colleagues to fund his vision to open a preeminent school for postgraduate dental education.

Over the past 25 years, Dean Spencer N. Frankl has sustained Dr. Goldman's collegial networking style and coupled it with current partnering trends to create a philanthropic mission and program that fuels our continued growth.

The enormous impact the generosity of our donors has had on our school and its success is evident in every aspect of our mission. Our research laboratories, academic scholarships, state-of-the-art clinics, and community outreach programs are robust and viable only through the crucial support of our friends, colleagues, and partners.

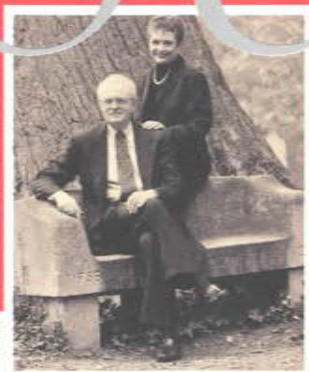
Devoted donors are truly the cornerstone of our foundation and the momentum of our growth. Following are just a few examples of the magnitude of what nurtured relationships, shared visions, and corporate partnerships can accomplish:

- The Simulation Learning Center
- Joan and Herbert Schilder Endodontic Research Center
- The Fredkin Educational Resource Center
- Dean's Conference Room
- Anthony A. Gianelly Alumni Chair in Orthodontics and Dentofacial Orthopedics
- Altshuler Family Endowed Awards Fund
- Center for Implantology Revolving Loan Fund
- Dr. Steve Gordon Memorial Scholarship
- Dr. Anthony Westwater Jong Scholarship Fund
- Michael and Sandra Roberts Lectureship in Pediatric Dentistry



Dr. Anthony Westwater Jong, whose scholarship fund in his memory provides much-needed student support.

# KNOW YOU



Michael (1900-70) and Sandra Roberts, donors of the Michael and Sandra Roberts Lectureship Fund in Pediatric Dentistry.



Edward and Joyce Fredkin, donors of the Edward and Joyce Fredkin Educational Resource Center.

## What is the value of your education?

Over the next few years, BUSDM will engage in its largest fundraising effort to date. As an integral member of the Boston University community, BUSDM will focus on raising much-needed funds to secure the future strength of our mission.

The goal of BUSDM's fundraising efforts will be focused on growing our endowment, providing scholarships, and renewing the physical infrastructures of our buildings. These efforts were identified in light of our continued dedication to enhancing the student experience and ensuring a thriving future for BUSDM. As we celebrate this anniversary year, we ask you to reflect on the many dimensions of your learning experience and ask, "What is the value of my education?"

Your continued support is vital. As we launch this exciting and challenging campaign, we will graciously solicit support from all our constituents: corporations and foundations, friends, parents, and, of course, you, our valued alumni. Each and every gift reflects a commitment to BUSDM and a desire to impact the future of dental medicine. By educating our leaders of the future, we, you, and the BUSDM community continue to make a difference in the next generation of dental professionals.



The Simulation Learning Center



Orthodontic alumni overwhelmingly voted to rename the Alumni Faculty Chair in honor of Dr. Anthony Gianelly.



Joan and Herbert Schilder, donors of the Herbert and Joan Schilder Endodontic Research Laboratory.



60's

HAROLD LEVIN  
CAS 54 ENDO 64

# PROFILES

{ 40 YEARS OF ALUMNI }

ELENI KOUSVELARI  
PROS 76 MSD 76

70's



"I found my spirit at BU."

"I'M NOT REALLY a graduate of the dental school—I just pretend so I get invited to the parties," jokes Harold Levin.

Technically, he's correct. Harold officially graduated from the Department of Stomatology at the School of Medicine, before the dental school's official commission as the School of Graduate Dentistry.

"I came home to Boston after completing a general practice residency in Philadelphia, which had a heavy emphasis on endo. I opened a general practice in Lynn, and since there really were no endodontists north of Boston, I was doing a lot of endo work. I discussed my problems with Herb [Schilder] at a dental meeting and before

I knew it I was a graduate student at BUSDM.

"It was an exciting time—Henry Goldman was just developing the concept of graduate education in dentistry. The specialties of endo, perio, and prosthetics were evolving. The faculty was enthusiastic about the advances in patient care and were obsessed with making each student the best.

"Before joining BU, I loved dentistry, but I didn't have a tremendous amount of enthusiasm. I found my spirit at BU. This is my 40th year teaching, because I love it. The success of our fundraising activities in endo proves to me that the spirit of excellence instilled at BU is still with us all."

AS A BRANCH CHIEF for molecular and cellular biology, physiology, and biotechnology at the National Institute of Dental and Craniofacial Research at the National Institutes of Health, Eleni Kousvelari stays on top of recent scientific discoveries. Her love for science is the reason she chose, years back, BUSDM.

"I wanted a program that had a combination of the best in prosthetic dentistry and was science oriented. And that is Boston University." When applying to postgraduate programs after receiving her DDS in her native Greece, she had no doubt about pursuing her passion. "It is an absolute thrill to be in the lab and work on an idea that came to you."

Now, Eleni's days are a fulfilling mix of overseeing research programs at the NIDCR and keeping abreast of the latest scientific discoveries. She makes time

every week to review journals at the library of the NIH, and also gives frequent presentations. "I have a talk coming up on nanotechnology that offers a glimpse of current scientific opportunities in this area," she says of the presentation she will give to researchers from universities and governmental agencies.

"Today's science is multidisciplinary," she says. "For example, in bioengineering, the development of specific devices and materials needs the insight of biologists, engineers, computer scientists, and clinicians. Because after all, these are the ultimate users of this product."

It is the combination of basic and applied research that brought Eleni to BUSDM. "Boston University gave me a fantastic blend of not just being a dentist but being a dental scientist. I really love science," she says. "Science generates new knowledge that will help us improve human life."

"Science generates new knowledge that will help us improve human life."



# 80's

BILL EAVES  
DMD 86

"No matter what you accomplish, someone helps you."

"ONE OF THE MOST important things I learned during my formal dental education was the importance of having a mentor—someone who can help you through those years when you are really green!" says Bill Eaves, dental director of the Lynn Community Health Center and the 2002 recipient of the BUSDM Distinguished Alumni Award for Service to the Community.

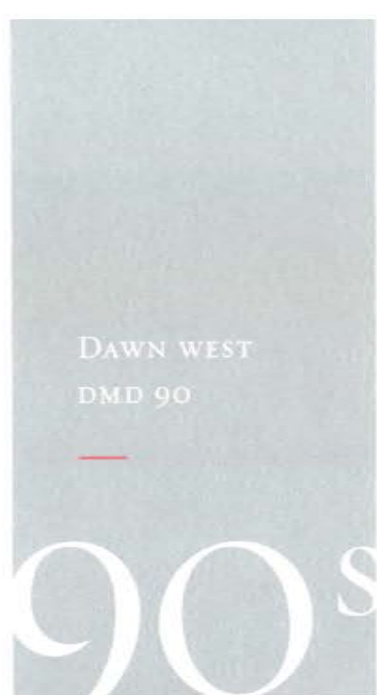
"I did my externship at a veteran's home in Maine and I saw things I never saw in school—and that was so fundamental for my training, especially to build my confidence before I went out into the practicing world.

"When I graduated, I joined a community health center [Dorchester House] for two reasons: to get paid and to have the experiences of a general practice residency. But it changed my

life. Working in a community setting is the most gratifying experience—I wouldn't have missed it for the world. The exposure, support, and training I had those first few years were essential to my growth as a practitioner.

"I'm a fervent believer in mentoring, and you can have many mentors throughout your career. It's important to have a 'go to' person. I try my best to expose the dental students who rotate through our center to every type of case. I can see them learning. It's quite rewarding."

Dr. Eaves' entire career has been about serving the community. His one year at Dorchester House turned into eleven—he then went on to become dental director at the South Boston Health Center, and most recently joined the Lynn center.



DAWN WEST  
DMD 90



Helping persons in need is a priority for Dawn West DMD 90. Before studying at BUSDM, she worked as a nurse at Children's Hospital, where she developed an interest in hospital dentistry by assisting (during general anesthesia) dental rehabilitations in the operating room.

"Dentistry is both medicine and art," she says. "It's possible to dramatically improve someone's life by combining science and esthetics. Diagnosis and treatment planning, as well as the technical disciplines of the dental profession, provide the scientific bases for oral health."

As director of the General Practice Residency Program at Boston Medical Center, Dawn provides unique training and oversight to the promising dentists of tomorrow. In addition, she works with BUSDM through the APEX

and Externship Programs, offering dental students a first-hand look at dentistry and the treatment of medically compromised patients in a hospital setting.

BUSDM is very supportive of Dawn's work at BMC, where she is the only full-time general dentist. In addition to her duties as director of the GPR, she prepares a Ryan White C.A.R.E. Act grant each year for reimbursement of costs associated with the treatment of patients with HIV. Dawn is one of the leading oral health care providers to patients with HIV in Boston, maintaining an active patient load of several hundred HIV and other medically compromised patients.

Dawn is energized by her work. "I am so fortunate to be able to effect positive change for patients who need a champion."

"It's possible to dramatically improve someone's life."

# Alumni News

## 1970s

**Donald Feldman MSD 71 ORTHO 71** is chair of the Council of Communication of the American Association of Orthodontists, past president of the Massachusetts Orthodontic Association, and past chair of the North Shore Dental Society. He makes his home in Lynn.



Members of the class of 1977 gather during Alumni Weekend 2002 (l-r): Frank Riccio, Mahnaz Messkoub (ENDO), Dennis Pipher, Michael Hauser, Alan Weiss, Mary George, Stephen Black, and Harvey Choit

## 1960s

**Joel Dunsky ENDO 62** was appointed to the Commission on Accreditation of the American Dental Association; he also chairs the Endodontic Review Committee of the commission. Dunsky resides in Boston.



Gerald Isenberg MSD 65 PERIO 65

**Gerald Isenberg MSD 65 PERIO 65** received the BUSDM Distinguished Alumni Award for Service to the School at the Spring Gala in May 2002. He continues to serve the school in his new role as a member of the school's Board of Visitors.



David Federick MSD 72 PROS 72

**David Federick MSD 72 PROS 72**, of Marina del Rey, California, gave almost 30 continuing dental education lectures across the country in 2002. He was the 2002 recipient of BUSDM's Distinguished Alumni Award for Service to the Profession.

## 1980s

**William Eaves DMD 86** was honored with the Distinguished Alumni Award for Service to the Community at the Spring Gala in May 2002. Many of his classmates attended the gala to share in his honor.



William Eaves DMD 86

## 1990s

**Zeina Majzoub PERIO 87 MSD 88 DMD 91** and **Paolo Vigolo PROS 90 MSD 91** are both assistant professors at the University of Padova (Italy), Institute of Clinical Dentistry. They received the 2001 Judson C. Hickey Writing Award from the Journal of Prosthetic Dentistry in the category of Clinical Science and Research for an article they published in the journal.



Members of the BUSDM Alumni Board gathered last July for an Alumni Board retreat on the Charles River

**Kirk Kalogiannis DMD 91 AEGD 92**, a clinical professor at New York University and in private practice in New Jersey, recently passed the oral examination to become board certified by the American Board of General Dentistry. As a trained forensic dentist, he was involved with New York City's Chief Medical Examiner's Office during the World Trade Center disaster.

**Jim Gharda DMD 93** married Rosa Marques last spring. They live in Forest Hills, New York, near his private practice in Glendale.

**Casey Cook DMD 98** and his wife Mary welcomed son Grady Thomas Cook to their family on April 22, 2002. Casey has a private practice in Somerville, Massachusetts, and teaches on Tuesdays and Fridays in BUSDM's Department of General Dentistry.



Grady Thomas Cook

## 2000's

**Devki Adi DMD 02** has relocated to Houston, Texas.

**Ghassan Khoury DMD 96 AEGD 97 MPH 99** married **Thenia Kazou AEGD 97 DMD 02**. They had a baby girl, Rena, on July 10, 2002.

**Manbeen Riar DMD 02** is now living in Norfolk, Massachusetts.

### IN MEMORY

David Chemel ENDO 83 | William F. White DMD 88

Students, faculty, and alumni volunteers at the May 2002 Special Smiles dental screening during Boston's Special Olympics



# The Last Word

By Dean Frankl's direction and example, the guiding principles of Henry M. Goldman live on in ever fuller realization.

## Dear Alumni and Friends,

Judging by its literary biography, there may be nothing quite so human as the toothache. Stock markets tumble, wars are won and lost, but to the man struck by pain in his gums, all the world's woes are clouded in the fog of his distress.

In "Address to the Toothache," Scottish poet Robert Burns growled:

*When fevers burn, or argues freezes,  
Rheumatics gnaw, or colics squeezes,  
Our neighbor's sympathy can ease us,  
Wi' pitying moan;*

*But thee—thou hell o' a' diseases—  
Aye mocks our groan.*

Since Burns' time, dental medicine has moved on to greater challenges than the simple toothache. But as metaphor, "thou hell o' a' diseases" still has the power to instruct. Surely we would be lesser beings were we not compelled to understand and relieve each other's pain.

More than 50 years ago, Henry M. Goldman recognized what dentistry must become: an integral part of medicine. Beginning in 1963, with colleagues from the University's School of Medicine he shaped anew the teaching and practice of dentistry throughout the world. He was the architect, builder and financier of a revolution in dentistry and dental education: he defined the oral physician, conceived a school where an oral physician might be educated, raised the funds to establish and sustain it and brought it into being. He developed its exemplary curriculum, recruited a faculty without equal and directed the design and construction of its building. He was with a completeness rarely equaled in medical education the founder of a great institution, the Boston University School of Graduate Dentistry. For most of its existence it has been not only preeminent but also unparalleled. Its success, however, has resulted in widespread emulation.

It was also a part of the mission of the school to extend itself in charitable directions, among the first being the partnership with Brighton's Franciscan Children's Hospital that thrives to this day. The reputation of the school spread

worldwide through advanced clinics offered in many foreign countries and special programs of intensive study offered to foreign students here in Boston.

As dean of the school, he constantly expanded its usefulness and guided the establishment of a predoctoral program that won immediate national accreditation. He did not allow his career as a medical administrator to distract him from extraordinary achievement as a practitioner, researcher and teacher. And thus he set a standard for those who follow, both in administration and on the faculty.

Such was the eminence and success of the school that on his retirement as dean in 1977, the Trustees of Boston University in recognition of his achievement conferred upon him the degree of Doctor of Science, honoris causa. Six years later on the occasion of his retirement from the faculty, the Trustees of Boston University took the unprecedented step of naming the School of Dentistry for its founder. No other dean has been so honored in the 163-year-history of Boston University.

Before his retirement, Dean Goldman informed me of his choice for his successor. By that time I had learned to



follow his advice and proudly and confidently named Spencer Frankl, Goldman's protege, to succeed him. The wisdom of that choice is manifest in the progress of the school under Dean Frankl's outstanding leadership over the past 25 years. By his direction and example, the guiding principles of its founder live on in ever fuller realization. Frankl's deanship has been notable for his unrelenting and highly successful efforts to build the research capabilities of the School of Dental Medicine and to integrate its programs into the Boston Medical Center.

At commencement exercises last May, I had the pleasure of awarding the University's highest award for excellence in teaching to Professor Laisheng Lee Chou, director of the School of Dental Medicine's Division of Oral Medicine. In congratulating Dr. Chou on winning the Metcalf Cup and Prize, I noted that he had shown students that the "pursuit of excellence in advanced medical research and compassionate care for patients are inseparable parts of a moral whole."

These dual pursuits, so prized by the school's founder, live on in the work of its longest-serving dean who has continued to imbue in each student the aspiration to be both technically accomplished and kind. For the past quarter-century Dr. Spencer Frankl has overseen the expansion of the school in the directions of enrollment, research and facilities. With relentless energy, Dean Frankl has introduced technologies and techniques, including its state-of-the-art simulation laboratories, that have made the Goldman School of Dental Medicine the finest in the nation. At the same time, under his direction the school's commitments to community service have grown along with its academic reputation. From nursing homes of Massachusetts to the barrios of South America,

Dean Frankl's students are taught to let their skills be guided by the hand of empathy.

It is my great pleasure to congratulate Dean Frankl on 25 years of distinguished service and to celebrate with you the fortieth anniversary of this great school.

John Silber, Chancellor  
Boston University

**BOSTON**  
**UNIVERSITY**

School of Dental Medicine  
100 East Newton Street  
Boston, MA 02118  
[www.dentalschool.bu.edu](http://www.dentalschool.bu.edu)

NONPROFIT  
U.S. POSTAGE  
PAID

PERMIT NO. 1839

THE 40<sup>TH</sup> ANNIVERSARY OF BOSTON UNIVERSITY GOLDMAN SCHOOL OF DENTAL MEDICINE  
SPENCER N. FRANKL 25 YEARS AS DEAN

NAME \_\_\_\_\_

DEGREE/GRAD YEAR \_\_\_\_\_

ADDRESS \_\_\_\_\_

CITY \_\_\_\_\_

PHONE \_\_\_\_\_

EMAIL \_\_\_\_\_

STATE \_\_\_\_\_

ZIP \_\_\_\_\_

NEWS/MESSAGE \_\_\_\_\_

Have you joined a practice, had a baby, sailed a sea?  
 Have an idea for a future issue or want to react to something you just read?



NO POSTAGE  
 NECESSARY  
 IF MAILED  
 IN THE  
 UNITED STATES



**BUSINESS REPLY MAIL**  
 FIRST CLASS MAIL PERMIT NO. 3550 BOSTON, MA

POSTAGE WILL BE PAID BY ADDRESSEE

Boston University School of Dental Medicine  
 715 Albany Street B.303  
 Boston, MA 02118-9928



# make your gift

Return this card or call 617/638-4891  
to make a gift today, or donate online at  
<http://dentalschool.bu.edu/alumni/givingback.html>

I give \$\_\_\_\_\_ to support Boston University Goldman School of Dental Medicine

Enclosed is my check made payable to Boston University Goldman School of Dental Medicine

Please bill my credit card:

VISA

MasterCard

Discover

\_\_\_\_\_ *card number*

\_\_\_\_\_ *expiration date*

\_\_\_\_\_ *signature*

\_\_\_\_\_ *today's date*

The mission of the Boston University Goldman School of Dental Medicine is to provide excellent education to dental professionals throughout their careers; to shape the future of dental medicine and dental education through research; to offer excellent health care services to the community; to participate in community activities; and to foster a respectful and supportive environment.

## annual recognition clubs

### President's Club

gifts of \$25,000 or more

### William Fairfield Warren Society

gifts of \$10,000 to \$24,999

### Isaac Rich Society

gifts of \$5,000 to \$9,999

### Dean's Club

gifts of \$2,500 to \$4,999

### 1839 Club

gifts of \$1,000 to \$2,499

### Scarlet Society

gifts of \$500 to \$999

### Century Club

gifts of \$100 to \$499

*Your company's matching gift is included  
in establishing your club level.*