

Boston University

OpenBU

<http://open.bu.edu>

BU Publications

Take One

1982-08

Take one: August 1982

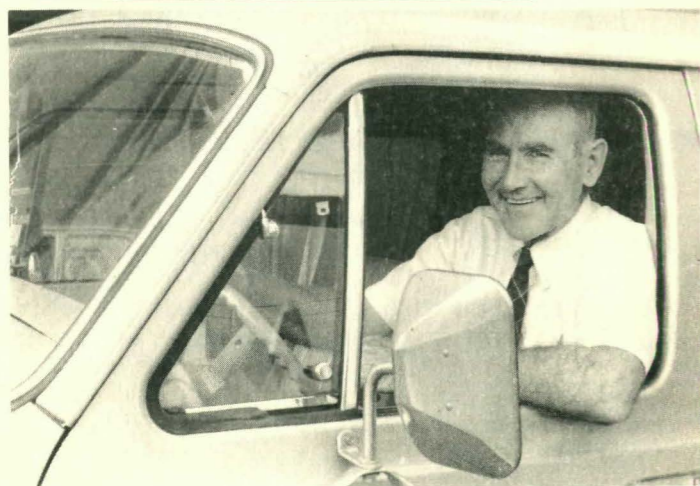
Boston University Medical Center. Take One: August 1982. Archived in OpenBU at <https://hdl.handle.net/2144/24154>.
<https://hdl.handle.net/2144/24154>

Downloaded from DSpace Repository, DSpace Institution's institutional repository

August 19, 1982

take one

a publication for the people of University Hospital



HE 'WORKS TO COMMUTE'-- UH employee Carroll 'Pete' Gouger vanpools to work with Caravan. See story inside.

CARAVAN OFFERS COMMUTER SERVICE TO AND FROM SUBURBS

Caravan, a private, nonprofit commuter vanpool service, seeks riders for several routes to and from Boston and the suburbs. This service already provides a convenient and cost-effective commuting alternative for more than 1,300 people who live or work in Massachusetts.

Carroll "Pete" Gouger, a systems analyst at the UH Computer Center, travels to and from Barnstable, Mass., in a Caravan vanpool. It is a 150-mile round trip. Gouger used to commute to work via the P & B Bus Line, the MBTA (South Station to Broadway) and the UH Broadway shuttlebus. The monthly cost was \$213.60. Now he pays \$95 per month and puts the savings of \$118.60 into his Individual Retirement Account each month.

Gouger said commuting with Caravan has been a real pleasure. He has cultivated some very good friendships with the other riders. The group has sing-alongs and a "happy hour" on Fridays. They even have a newsletter called The Van-a-gram and they named their singing group the Vanettes. They have so much fun, their van motto is "We work to commute."

The van is equipped with AM-FM stereo and pillows for those who wish to sleep. The riders chip in a little each week for food and drink. Some mornings they stop for coffee along the way.

To start a new vanpool route, 12 to 15 interested commuters, who are committed to Caravan on a monthly basis, are needed. Each rider pays a monthly fare that covers the cost of the lease on the vehicle, gasoline, maintenance and insurance. The commuters may decide to share driving responsibilities, or one of the commuters may choose to do the driving and earn the right to ride for free.

Parking costs and tolls are not included on most routes; although discounts are available for some of the tolls. Boston stops include Government Center/South Station, Hancock/Prudential area, Kenmore Square/Brookline Ave. and Park Square and Symphony. Most Boston suburbs are serviced, as well as Cambridge, the North and South shores, Worcester, Framingham and parts of New Hampshire. For more information, call Caravan, 742-2655.

need to know

HOSPITAL SETS CAP ON HIRING TO OFFSET EFFECT OF NEW REIMBURSEMENT REGULATIONS

A Hospital-wide hiring freeze was instituted at UH on August 12 in response to recent regulatory and legislative changes relating to hospital reimbursement in Massachusetts. The changes have forced hospitals to review their finances and staffing needs.

According to J. Scott Abercrombie Jr., M.D., Hospital administrator, a hiring freeze "allows the administration to reexamine staffing levels and requirements with the least amount of impact on the Hospital, patient care and individuals." Although the hiring freeze has been applied Hospital-wide, general administrators may recommend exceptions in certain cases.

Departmental administrators and operational managers have been asked to review all positions affected by the freeze with their general administrators as to the absolute necessity of each position to the functioning of the department. The final decision in the review process will be made by the Hospital administrator.

Walter Levensaler, director of Personnel for UH, remarked, "We are going to have to do more with less; everybody will have to work harder. The workload is not going to diminish." He asked that employees with cost-saving suggestions relay those suggestions to their supervisors.

Take One is published for the employees of University Hospital every second Thursday by the Office of Informational Services, Boston University Medical Center. For copy submission or information, please contact Nancy Shea, editor; or Owen J. McNamara, director, Office of Informational Services, DOB-600, x5606.



around about UH



SLUGGING AWAY-- University Hospital's Home Medical Service softball team is slowly climbing the ladder of league standings and is looking towards season's end with an eye on a play-off berth. The team has a 6-5 record and is in third place in the league. In addition to the Home Medical Service, the league is composed of teams from the Boston Visiting Nurse Association, the Somerville Visiting Nurse Association and Area II Home Care.

The Home Medical Team players are, from left to right: Row 1, Paul and Kelly Hudson children of HMS secretary Kathy Hudson; Rayshawn Greene and his mother Patsy Greene, an HMS secretary; Row 2, Joe Grodin, M.D., formerly a physician at the Gundersen Eye Clinic; Allen Waltman, M.D, HMS physician; Kathy Hudson; Anna Bissonnette, R.N., assistant director of HMS; Row 3, HMS physician George Rosenthal, M.D.; Steve Black; Carl Ollivier, HMS social worker; Brian McCluskey, UH volunteer; and Joan Gerowitz, UH social worker. Members not pictured are: Henry Daise, husband of HMS nurse Gloria Daise, R.N.; Brenda Splitz, nurse practitioner for HMS, and her son, John Robinson; Kathy Kuhn, social worker for HMS, John Bezirgianian, a first-year medical student currently doing his rotation with HMS; and Kathy Tavares, HMS secretary, and her friend, Paul Carvalho.

people

INTERVIEW WITH E-8 PATIENT: BEATRICE KANTER BRINGS HUMOR AND ROMANCE TO EVERYDAY LIFE

Take One recently spoke with Beatrice Kanter, a native of Boston and a patient on E-8, about her life and her stay at UH. Despite more than 60 hospitalizations for various illnesses during her lifetime (25 of them at UH), she still has an optimistic outlook--one that includes humor and a zest for life that brought her to the attention of Take One. Kanter, an avid Red Sox fan, attended Boston University and was a social worker at BCH for more than 20 years. The following are excerpts from the interview:

Take One: I hear that you have followed the Red Sox for more than 20 years. Is that right?

Kanter: Yes, I have watched boys become men and men become fathers.

Take One: Who are your favorites?

Kanter: Well, I share nostalgia with Yaz and sympathy with Zimmer (former Red Sox manager Don Zimmer). But my experiences as a baseball fan are not really news. I started going to games because I had crushes on the players. The real news story about me is my multiple hospital admissions. I've been admitted to UH about 25 times.

Take One: What for?

Kanter: Oh well, once I had a kidney removed. Another time I was in a car accident. I met an old buck...he didn't know how to drive very well...it was a snowy day...we landed in the hospital.

Take One: How did you cope with being in the hospital so often?

Kanter: Well, the surroundings have become so familiar that I don't have to cope. Some people count sheep to get to sleep, I count my diagnoses.

But if I were reading Take One, I wouldn't want to read about somebody else's troubles. You see enough when you work in a hospital.

Take One: Some of our readers are not directly involved in patient care.

Kanter: Ah yes, 'many a flower is meant to blush unseen'...by that I mean, many beautiful things go on behind the scenes and don't get much recognition.

Take One: Have you been happy here at UH?

Kanter: Oh, yes. I have never seen the equal of the nursing care here, it's superb. Especially the nurses here on E-8. I also like the Evans Medical Group, everything under one roof, it's a wonderful set-up.

Take One: What are your plans for the future?

Kanter: Well, shortly I will be going to Mount Sinai Hospital in Stoughton--it's a hospital equipped to offer extended care to people who need it. I'd love to have visitors. I love to listen to other people's life stories. I listen with courtesy and compassion. I like to discuss music and theatre and current events.

classified

APARTMENT FOR RENT: Elegant 4-bdrm. duplex apt. 2 baths, veranda, fireplace. Garage parking. Quiet residential neighborhood. Near transportation. \$985, unhtd. Avail. immed. Call owner: 566-7853.

CAR FOR SALE: '78 Chevy Nova, 6-cyl., 40K mi., 2-dr., \$3,200 or b/o. Call Joyce at x5753, days, 328-5761, eves.

CARPOOLER WANTED: Looking to join or start carpool. 8 a.m.-5 p.m. Nashua vicinity. Would consider anyone along Rt. 3 as far south as Burlington. Call Gail at x5880.