

2023-07-13

# Hemispheric symmetry and asymmetry of poleward moving radar auroral forms (PMRAFs) and associated polar cap patches during a geomagnetic storm

---

Y. Zou, L.-J. Chen, B.M. Walsh, B. Burkholder, Y. Ma, W.A. Bristow, L.R. Lyons, J. Liu, S. Tian, S. Yadav, A.J. Coster, K.A. McWilliams. "Hemispheric symmetry and asymmetry of poleward moving radar auroral forms (PMRAFs) and associated polar cap patches during a geomagnetic storm" *Frontiers in Physics*, Volume 11. <https://doi.org/10.3389/fphy.2023.1174209>

<https://hdl.handle.net/2144/48232>

*"Downloaded from OpenBU. Boston University's institutional repository."*

# Geophysical Research Letters<sup>®</sup>



## RESEARCH LETTER

10.1029/2023GL103347

## Soft X-Ray Imaging of Earth's Dayside Magnetosheath and Cusps Using Hybrid Simulations

J. Ng<sup>1,2</sup> , B. M. Walsh<sup>3</sup> , L.-J. Chen<sup>2</sup> , and Y. Omelchenko<sup>4,5</sup> 

<sup>1</sup>Department of Astronomy, University of Maryland, College Park, MD, USA, <sup>2</sup>NASA Goddard Space Flight Center, Greenbelt, MD, USA, <sup>3</sup>Boston University, Boston, MA, USA, <sup>4</sup>Trinum Research Inc., San Diego, CA, USA, <sup>5</sup>Space Science Institute, Boulder, CO, USA

### Key Points:

- Soft X-ray images are reconstructed using the results of hybrid simulations and virtual spacecraft based on the upcoming LEXI mission
- The cusp, bow shock and magnetopause motion are captured by the X-ray emission
- Kinetic structures such as foreshock cavitons can be seen in the X-ray intensity for short integration times

### Supporting Information:

Supporting Information may be found in the online version of this article.

### Correspondence to:

J. Ng,  
jonng@umd.edu

### Citation:

Ng, J., Walsh, B. M., Chen, L.-J., & Omelchenko, Y. (2023). Soft X-ray imaging of Earth's dayside magnetosheath and cusps using hybrid simulations. *Geophysical Research Letters*, 50, e2023GL103347. <https://doi.org/10.1029/2023GL103347>

Received 21 FEB 2023

Accepted 2 MAY 2023

### Author Contributions:

**Conceptualization:** B. M. Walsh, L.-J. Chen

**Methodology:** J. Ng

**Resources:** L.-J. Chen

**Software:** J. Ng, Y. Omelchenko

**Visualization:** J. Ng

**Writing – original draft:** J. Ng

**Writing – review & editing:** B. M. Walsh, L.-J. Chen

**Abstract** Interactions between solar wind ions and neutral hydrogen atoms in Earth's exosphere can lead to the emission of soft X-rays. Upcoming missions such as SMILE and LEXI aim to use soft X-ray imaging to study the global structure of the magnetosphere. Although the magnetosheath and dayside magnetopause can often be driven by kinetic physics, it has typically been omitted from fluid simulations used to predict X-ray emissions. We study the possible results of soft X-ray imaging using hybrid simulations under quasi-radial interplanetary magnetic fields, where ion-ion instabilities drive ultra-low frequency foreshock waves, leading to turbulence in the magnetosheath, affecting the dynamics of the cusp and magnetopause. We simulate soft X-ray emission to determine what may be seen by missions such as LEXI, and evaluate the possibility of identifying kinetic structures. While kinetic structures are visible in high-cadence imaging, current instruments may not have the time resolution to discern kinetic signals.

**Plain Language Summary** When heavy solar wind ions and exospheric neutrals near the Earth interact with each other, X-rays can be emitted. Upcoming missions such as SMILE and LEXI will use these X-rays to image Earth's magnetosphere. Earlier simulations used to predict how these images appear have used fluid models which omit small-scale physics. In this work we use hybrid simulations, which include ion kinetic effects, to make predictions about X-ray images. The additional structures due to the kinetic physics can be seen when the images are taken at high cadence, but current imagers may not have the sensitivity to see these structures.

## 1. Introduction

Charge exchange interactions between high charge-state solar wind ions and neutrals in Earth's exosphere can lead to the emission of soft X-ray photons. For instance, the interaction



in which an electron is transferred from an exospheric hydrogen atom to an oxygen ion, leaves the oxygen ion in an excited state. The decay of the electron to a lower energy state then leads to the emission of a soft X-ray photon. In the plasma environment around the Earth, soft X-rays are emitted due to the interaction of heavy solar wind ions and neutral hydrogen, as shown by various observational studies (e.g., Carter & Sembay, 2008; Cravens et al., 2001; J. A. Carter et al., 2011; Freyberg, 1998).

The study of global magnetospheric dynamics using soft X-rays with wide field-of-view imaging has been suggested (Branduardi-Raymont et al., 2012; M. Collier et al., 2012; Kuntz et al., 2015; Sibeck et al., 2018; B. M. Walsh et al., 2016). Spacecraft such as the Solar wind-Magnetosphere-Ionosphere Link Explorer (SMILE) (Branduardi-Raymont et al., 2018) and the Lunar Environment heliospheric X-ray Imager (LEXI) (B. Walsh et al., 2020) will be launched in the near future. Potential results of soft X-ray imaging have been studied by using data from Magnetohydrodynamics (MHD) simulations (Connor et al., 2021; Kuntz et al., 2015; Matsumoto & Miyoshi, 2022; T. R. Sun et al., 2015, 2019; B. M. Walsh et al., 2016). In these works it has been shown that it may be possible to observe physical phenomena such as Kelvin-Helmholtz instabilities (T. R. Sun et al., 2015), the magnetospheric cusps, and magnetopause motion and erosion due to reconnection (Connor et al., 2021; Samsonov, Carter, et al., 2022; Samsonov, Sembay, et al., 2022; T. R. Sun et al., 2019; B. M. Walsh et al., 2016). These results have shown how imaging can contribute to the understanding of global magnetospheric dynamics.

© 2023 The Authors.

This is an open access article under the terms of the [Creative Commons Attribution-NonCommercial License](https://creativecommons.org/licenses/by-nc/4.0/), which permits use, distribution and reproduction in any medium, provided the original work is properly cited and is not used for commercial purposes.

Due to the fluid nature of the MHD model, kinetic structures are not captured by these simulations. Hybrid simulations, with kinetic ions and fluid electrons, have been used to study the effects of ion kinetic physics on the global behavior of the magnetosheath and magnetosphere. For example, ion-ion instabilities in the foreshock generate ultra-low frequency (ULF) waves, which may evolve into structures such as short large amplitude magnetic structures (Chen, Wang, et al., 2021; Schwartz et al., 1992), cavitons (Kajdič et al., 2011) and spontaneous hot flow anomalies (Zhang et al., 2013). Other kinetic structures, such as high speed jets (Hietala et al., 2012; Raptis et al., 2020), are also present in these simulations (Y. Omelchenko et al., 2021; Ng et al., 2021). These structures can cause large scale perturbations in the magnetosheath and at the magnetopause, sometimes even triggering reconnection (Chen, Ng, et al., 2021; Lin & Wang, 2005; Ng et al., 2021; Omidi et al., 2016). Hybrid simulations have also been used to study the effects of foreshock waves on field-line resonances (Shi et al., 2021), and cusp energetic ions (X. Y. Wang et al., 2009). It is important to understand which aspects of kinetic physics can be captured by X-ray imaging with present and future instruments.

In this paper we discuss the results of reconstructing X-ray emission using global hybrid simulation data. In Section 2.1 we discuss the hybrid simulations and the X-ray emission model used to calculate the X-ray emission intensities. In Section 3 we discuss the images produced and the physical phenomena that can be seen, followed by a discussion of the limitations and a summary in Section 4.

## 2. Simulation and Soft X-Ray Model

### 2.1. Hybrid Simulations

In this work we use data from hybrid particle-in-cell simulations to reconstruct soft X-ray emission intensity. Ions (in this case protons) are evolved kinetically as macroparticles while the electrons are treated as a charge-neutralizing fluid. The governing equations of the HYPERS model and numerical details are available in (Y. Omelchenko & Karimabadi, 2012; Y. Omelchenko et al., 2021; Y. A. Omelchenko et al., 2021).

We discuss results using the same data from simulations in Ng et al. (2022a). In both cases, the IMF is quasi-radial, with cone angle  $170^\circ$ , where the  $B_x$  component of the IMF points toward the Earth. The clock angles are  $0^\circ$  and  $180^\circ$ . The simulations use a physical domain of  $716d_i \times 1334d_i \times 1334d_i$ , where  $d_i$  is the proton inertial length in the solar wind. The upstream ratio between thermal and magnetic pressure for both protons and electrons is  $\beta = 8\pi n_0 T_0 / B_0^2 = 0.5$ , and the ratio of the speed of light to the upstream Alfvén speed is  $c/v_A = 8,000$ . Here  $n_0$ ,  $B_0$ , and  $T_0$  are the solar wind values of density, magnetic field and temperature respectively. The Earth's magnetic dipole is tilted  $11.5^\circ$  sunward. The computational domain is covered by a  $300 \times 500 \times 500$  cell stretched mesh, with a uniform patch around the Earth being covered by  $175 \times 300 \times 300$  grid cells with a resolution of 1 cell per  $d_i$ . Outside the uniform patch, the mesh cells are stretched exponentially with a growth factor of 12.

We use the Geocentric Solar Magnetospheric (GSM) coordinate system, where the  $x$ -axis points from the Earth toward the Sun, the  $y$ -axis points in the dawn-dusk direction and the  $z$ -axis completes the right-handed system. The initial Alfvén Mach number is 8 (i.e.,  $v_0/v_A = 8$ ). The dipole strength is scaled such that the nominal magnetopause standoff distance is approximately  $100 d_i$  (using the solar wind value of  $d_i \approx 100$  km). The inner boundary is a hemisphere of radius  $50 d_i$  with absorbing boundary conditions for particles and perfectly conducting boundaries for fields. We note that the standoff distance of  $100 d_i$  is smaller than the realistic standoff distance ( $\sim 500 d_i$ ), but is much larger than the minimum distance needed to simulate an earthlike magnetosphere (Omidi et al., 2004). As was demonstrated (Tóth et al., 2017), the global magnetospheric solution is not strongly sensitive to this scaling factor, with the ion inertial length dynamics of the numerical model occurring in a self-similar manner with respect to the original plasma system. In the simulation, the solar wind density is set to be  $5 \text{ cm}^{-3}$ , and the magnetic field is  $|B| \approx 3.8 \text{ nT}$ . The solar wind proton temperature is  $3.6 \text{ eV}$ . Simulation outputs are written every  $3.125/\Omega_{ci} \approx 8.3 \text{ s}$  where  $\Omega_{ci}$  is the ion cyclotron frequency calculated using the IMF. The conversion to physical units is discussed in the Appendix.

Simulations with these parameters have been used in previous works (Chen, Ng, et al., 2021; Ng et al., 2021, 2022a; Y. Omelchenko et al., 2021) to study the effects of the quasi-radial IMF conditions on the magnetosheath and magnetopause. As this paper is focused on the results of soft X-ray imaging rather than an analysis of the plasma behavior, we briefly summarize the results here. Under quasi-radial IMF, the conditions are favorable for the formation of foreshock kinetic waves and structures including high-speed jets—regions of enhanced dynamic pressure in the magnetosheath. It should be noted that periods of quasi-radial (cone angle  $<30^\circ$ ) IMF, where the

kinetic effects are strongest, occur  $\sim 16\%$  of the time based on observations at 1 AU (Suvorova et al., 2010). In Y. Omelchenko et al. (2021), jets in the simulations were identified and characterized and compared to observations. In Chen, Ng, et al. (2021) and Ng et al. (2021), the effects of foreshock turbulence and high-speed jets on the magnetopause were studied and shown to cause magnetopause indentations and trigger magnetopause reconnection. Ng et al. (2022a) studied the overall structure of the magnetosheath and the role of foreshock turbulence. For the slightly northward IMF case, it was shown that a dynamic plasma depletion layer (PDL) developed, while in the slightly southward IMF case, the combination of foreshock turbulence and reconnection led to density enhancements in the cusp.

## 2.2. Soft X-Ray Model

Following Kuntz et al. (2015), Connor et al. (2021), Cravens et al. (2001), the soft X-ray intensity is calculated using the line integral

$$R_{xray} = \frac{\alpha}{4\pi} \int N_p N_N v_{\text{eff}} ds [\text{eVcm}^{-2}\text{s}^{-1}\text{sr}^{-1}], \quad (2)$$

where  $v_{\text{eff}} = \sqrt{v_p^2 + v_{th}^2}$  is the effective velocity with  $v_p$  and  $v_{th}$  the bulk and thermal velocities respectively.  $N_p$  is the ion density and  $N_N$  is the neutral density. The integral is taken along the line-of-sight of the soft X-ray imaging device. We use  $\alpha = 6 \times 10^{-16} \text{ eVcm}^2$  (Connor et al., 2021; Cravens et al., 2001), and the neutral density is determined by

$$N_N = 25 \left( \frac{10R_E}{R} \right)^3 [\text{cm}^{-3}], \quad (3)$$

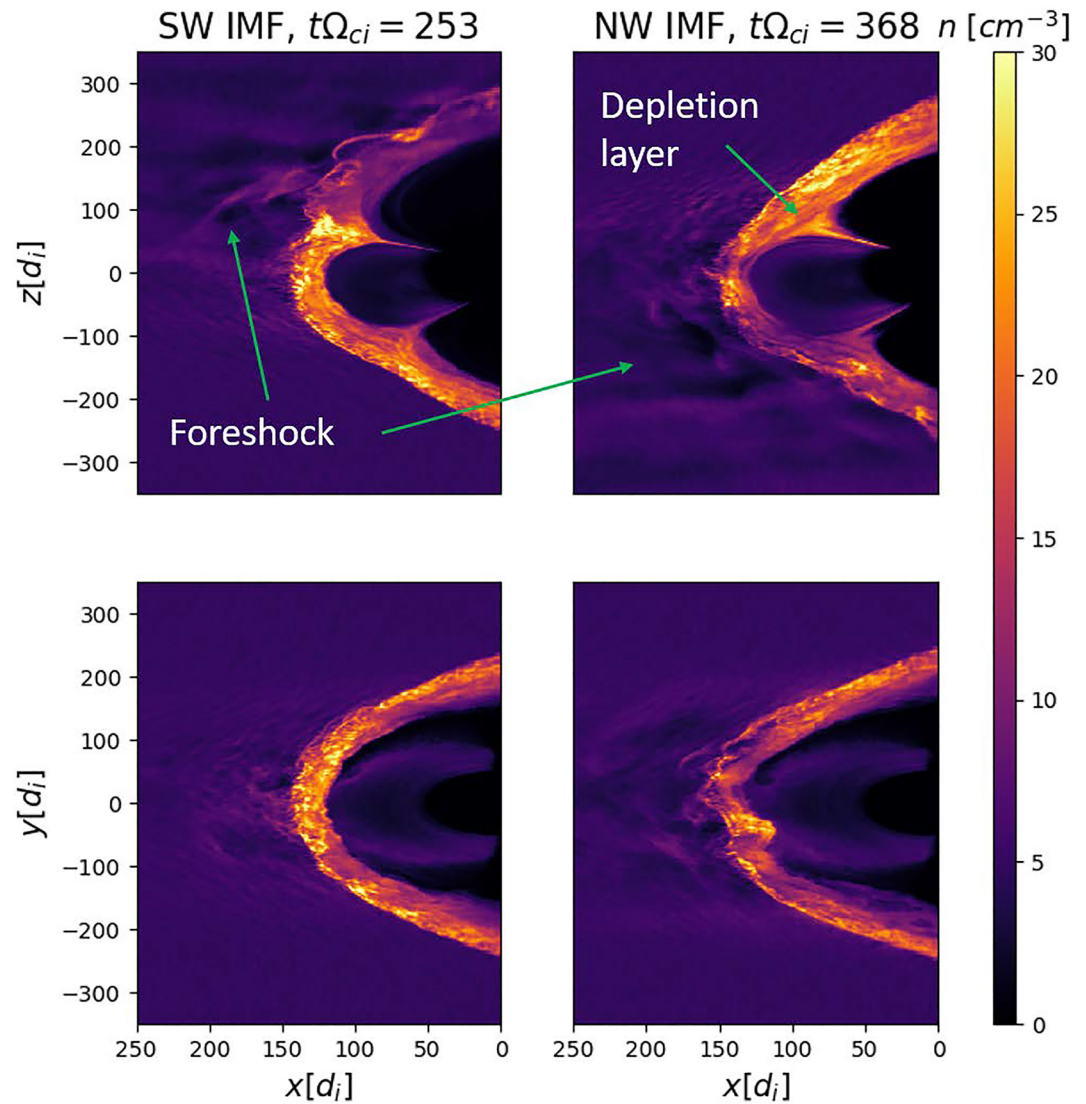
where  $R$  is the distance from the center of the Earth and  $R_E$  is the Earth radius.

## 3. Results

We first provide an overview of the simulation. Figure 1 shows the plasma density in the GSM  $x$ - $z$  and  $x$ - $y$  planes, with the southward IMF case on the left, and the northward IMF case on the right. The results shown in the figure are chosen to highlight specific features in the system. In both cases, there are strong foreshock density fluctuations due to the nonlinear evolution of ULF waves, and the magnetosheath is turbulent. The southward IMF case shows a density enhancement outside the northern cusp associated a high-speed jet (Ng et al., 2022a), while the northward IMF case shows a thin region of reduced density at the northern cusp boundary referred to as a PDL (Lavraud et al., 2005; Zwan & Wolf, 1976). In the  $x$ - $y$  plane of the northward IMF simulation, a strong indentation of the magnetopause is seen in the  $-100 < y < 0$  region, caused by the impact of a large high-speed jet approximately  $10\Omega_{ci}^{-1}$  before. The time evolution of the systems can be seen as movies in Ng et al. (2022b).

Using Equation 2, we calculate the soft X-ray intensities observed by a spacecraft located at  $(x, y, z) = (0, 60R_E, 0)$ . The angular resolution of the images is  $0.2^\circ \times 0.2^\circ$ , corresponding to the resolution of the LEXI detector and the approximate orbit radius of the camera which is positioned on the moon. Note that the use of a stretched mesh reduces the accuracy of the integration away from the central domain, but the effect on the integral is small because of the  $1/R^3$  scaling of the neutral density. The results are shown in Figure 2, where  $\pi/2 - \theta$  is the polar angle measured from the positive  $z$  axis, and  $\phi$  is the azimuthal angle measured from the positive  $y$  axis. The inner boundary is marked by the black area. In these results we have not performed masking of the magnetosphere as in (Samsonov, Carter, et al., 2022), but the density in the magnetosphere and contribution to the X-ray intensity is sufficiently small that we can readily identify the magnetopause boundary in the results. In the southward IMF case, there is increased intensity in  $\theta > 0$  region, corresponding to the enhancement seen in Figure 1. While some of the increase in intensity can be attributed to the dipole tilt in the system (e.g., B. M. Walsh et al., 2016), the peak intensity in this region varies by up to a factor of two during the simulation, indicating the transient behavior. The time evolution of this region close to the northern cusp can be seen as a Movie S1.

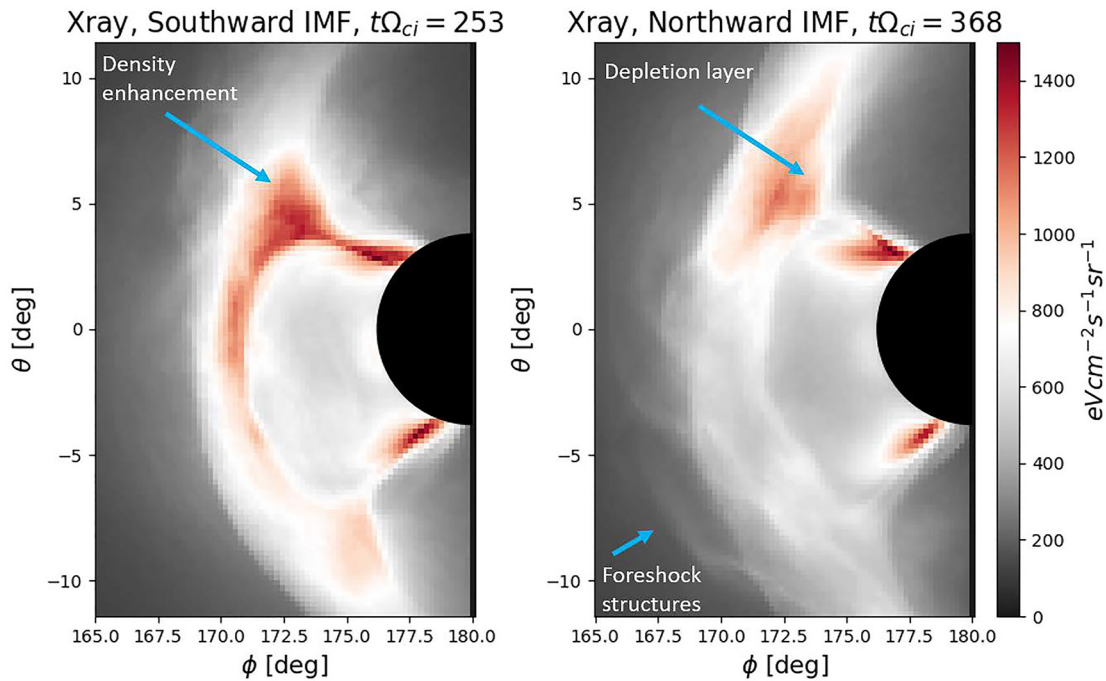
For the northward case shown in the right panel of Figure 2, there are clear physical features which are marked by arrows. Around  $\theta = 5^\circ$ , the intensity shows a minimum before the transition to the cusp close to  $\phi = 173^\circ$ , indicative of the PDL, while there are curved intensity enhancements in the foreshock region. These are related



**Figure 1.** Overview of the quasi-radial IMF simulations with weak southward (left) and northward (right) components in Geocentric Solar Magnetospheric  $x$ - $z$  (top) and  $x$ - $y$  (bottom) planes using a subset of the domain. The aspect ratios of the axes are slightly distorted so that the entire dayside is shown.

to the evolution of foreshock waves into structures known as cavitons or spontaneous hot flow anomalies (Blanco-Cano et al., 2009; Lin & Wang, 2005; Zhang et al., 2013), characterized by high densities and magnetic fields at the rims and increased temperatures inside. One of the more prominent structures is found at  $\theta = -7.5^\circ$ , where there is a local maximum of intensity. Similar structures can be seen in the southward IMF case in the  $\theta > 5^\circ$  region. Evidence of foreshock activity is visible in other regions just outside the magnetosheath where there is increased intensity compared to regions further away in the solar wind.

The soft X-ray diagnostic can be used to study the motion of the magnetopause. As shown in (M. R. Collier & Connor, 2018; Connor et al., 2021; Samsonov, Carter, et al., 2022; T. Sun et al., 2020; C. Wang & Sun, 2022), the peak intensity corresponds to the angle at which the line of sight is tangent to the magnetopause. As  $\phi$  increases, the line of sight moves from the magnetopause to the magnetosphere, the intensity is reduced as the integral passes through a shorter region of the high density magnetosheath and parts of the low density magnetosphere. When  $\phi$  decreases and the line of sight moves toward the bow shock, the intensity reduces as the path through the magnetosheath also shortens. Beyond point where the line of sight is tangent to the bow shock, there is also a change in the gradient as the line of sight no longer passes through the magnetosheath, leading to a reduced signal and less variation aside from foreshock activity. In addition to the maximum of intensity at the

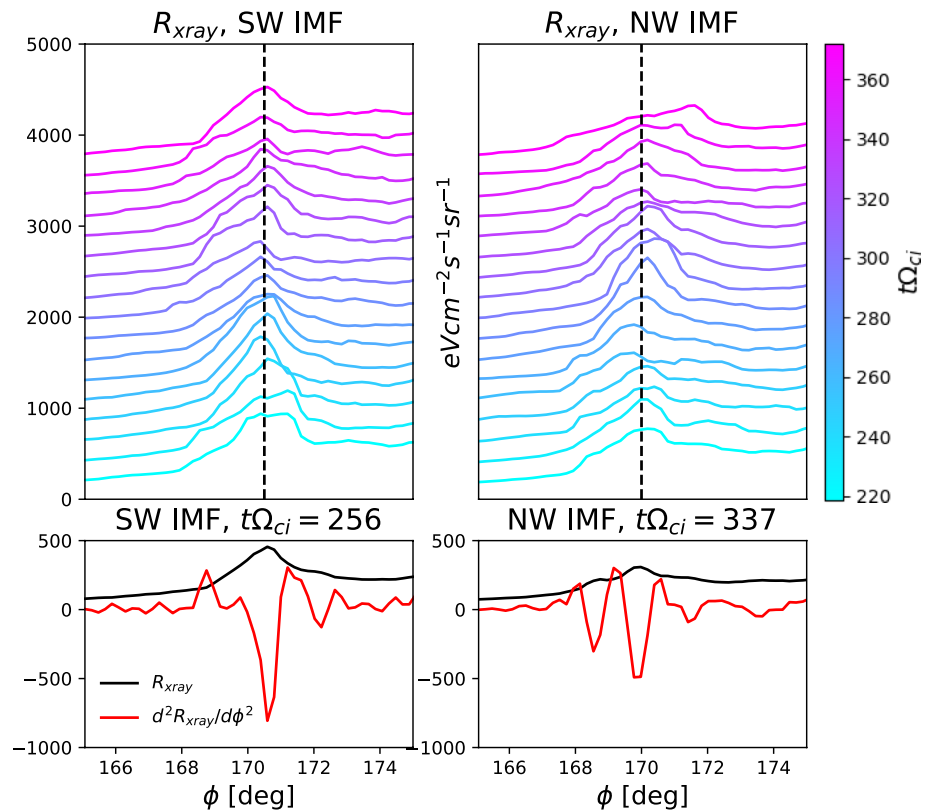


**Figure 2.** Soft X-ray images from the slightly southward and slightly northward IMF simulations using a detector positioned at Geocentric Solar Magnetospheric  $y = 60R_E$  with angular resolution  $0.2^\circ \times 0.2^\circ$ .

magnetosheath, there are changes in the gradient of the intensity at the transitions between the magnetosphere and magnetosheath, and the magnetosheath and the solar wind. This can then be used to track the motion of the magnetopause throughout the simulation. The location of the tangent to the bow shock is where the gradient of the intensity changes from the solar wind to the magnetosheath, and this is detected by finding the peak  $d^2R_{\text{xray}}/d\phi^2$ . The evolution of a cut along  $\phi$  at  $\theta = 0$  in both simulations is shown in Figure 3, with a slight offset at each successive time for clarity. In both simulations, it can be seen that the peak moves, indicating magnetopause motion. This is caused by the changing plasma pressure in the turbulent magnetosheath. At certain times, the peaks broaden, likely due to magnetosheath inhomogeneities changing the density profile and hence the X-ray emission. At the latest time in the northward IMF simulation, the intensity peak is particularly far to the right due to a magnetopause indentation. There are also indications of density enhancements at the bow shock related to foreshock activity (e.g., Lin & Wang, 2005; Omidi et al., 2016) which can be seen as “knees” in the intensity plots around  $\phi = 168^\circ$ .

Because of foreshock activity and density variations in the magnetosheath, the  $d^2R_{\text{xray}}/d\phi^2$  signal is not as clear as it is in MHD simulations. Examples from different times used to illustrate the potential issues are shown in the lower panels of Figure 3. The bottom left panel shows a straightforward trace, where the peaks in  $d^2R_{\text{xray}}/d\phi^2$  at  $\theta \approx 169^\circ$  and  $170.5^\circ$  show clear indications of the bow shock and magnetopause. There are some also fluctuations in the foreshock region indicative of the wave activity there. Overall, this trace is quite similar to the examples shown in Connor et al. (2021). A more complex example is shown in the bottom right. Here  $d^2R_{\text{xray}}/d\phi^2$  shows multiple minima and maxima due to density fluctuations in the magnetosheath. While it is still possible to identify the bow shock and magnetopause positions using the maximum at  $\phi \approx 168^\circ$  and the minimum at  $\phi \approx 170^\circ$ , the more complex trace indicates that the interpretation of the signal can be more difficult than what is expected from MHD studies because of the turbulence in the magnetosheath.

The question of whether the X-ray signal can be measured is an important one. So far, we have studied the “ideal” case, with the signal calculated using single outputs from the simulation. Figure 4 shows the results of time-averaging and using a lower angular resolution. Here the time-averaging is performed over approximately 30 s (corresponding to 4 simulation outputs around the times shown in Figure 2). It can immediately be seen that the large-scale magnetosheath inhomogeneities are still present, though the fine structures in the foreshock are no-longer visible but are smeared out. Integrating over a more realistic longer period would thus further wash



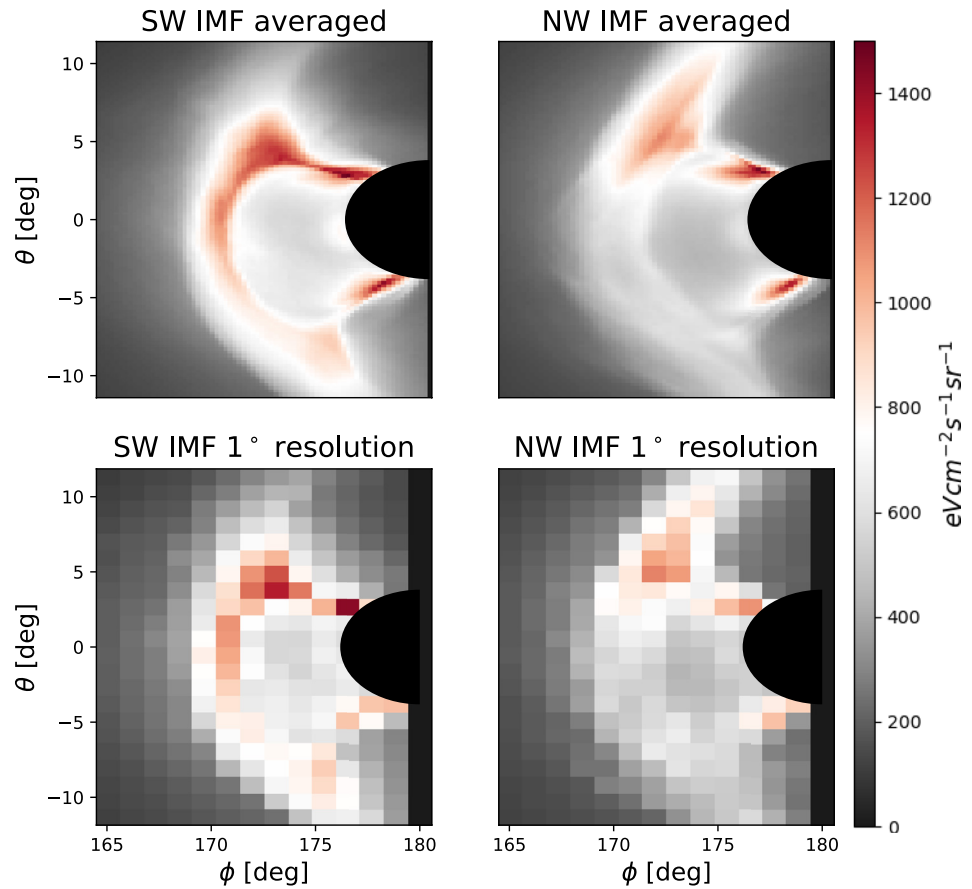
**Figure 3.** (top) Stack plots showing the time evolution of the intensity at  $\theta = 0^\circ$  in both simulations showing the motion of the magnetopause. (bottom) X-ray intensities and  $d^2 R_{xray} / d\phi^2$  at selected times to show (left) how the bow shock and magnetopause locations can be determined, and how density inhomogeneities complicate the interpretation of the signal. A dashed vertical line is provided as a visual aid. The time interval between each trace is  $9.375/\Omega_{ci}$ .

out the kinetic structures. Based on some experimentation with the simulation data, we find that the foreshock structures are visible when averaging over approximately 15 s is performed. The large-scale inhomogeneities are still visible with the time-averaging and with lower resolution. These plots do not include the contribution of the galactic background, that has been well-characterized by astrophysical observatories such as ROSAT (Kuntz & Snowden, 2000; Trümper, 1982). While the magnetospheric signal varies on time-scales of minutes in response to the varying solar wind, the galactic contribution varies on much longer time scales, years or more, allowing much of it to be removed from the integrated signal (Sibeck et al., 2018). For a lunar-based observer looking away from the direction of the incident solar wind, the charged particle background is relatively low. The LEXI payload utilizes blocking filters and sweeping magnets to stop and repel charged particles. The modeled charged particle background for the payload is less than 1 count/s. A brief discussion of the results with added galactic background and Poisson noise is available in the Appendix.

#### 4. Discussion and Summary

We have used hybrid simulations of the dayside magnetosphere under quasi-radial IMF to calculate soft X-ray emission intensity. This technique will be used to image the magnetosphere by upcoming missions such as LEXI and SMILE, and in earlier work, MHD simulations have been used to show the possible physical phenomena that can be captured by the imaging method (Atz et al., 2022; Connor et al., 2021; Kuntz et al., 2015; Matsumoto & Miyoshi, 2022; T. R. Sun et al., 2015, 2019; B. M. Walsh et al., 2016).

Under quasi-radial IMF, the physical conditions are favorable for foreshock turbulence to affect the subsolar regions of the magnetosheath and magnetopause. Our results show that some of these kinetic effects can be seen in the X-ray emission intensity, including transient density enhancements, magnetosheath indentations due to turbulence and signatures of foreshock activity such as cavitons. Additionally, the structure of the intensity in the magnetosheath can be more complex than seen in MHD simulations because of kinetic turbulence.



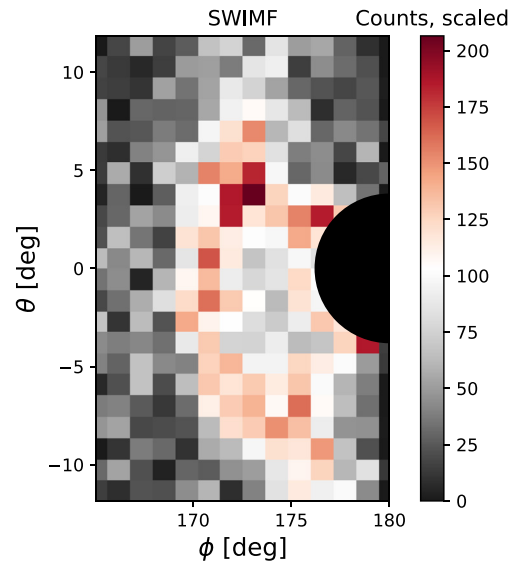
**Figure 4.** (top) Time-averaged signals over 30 s in both simulations around the times used in Figure 2. (bottom) Lower-resolution images of the X-ray intensities at the times shown in Figure 2.

Whether the kinetic signatures can be detected by upcoming missions is less clear for a number of reasons. Because of the computational limitations of hybrid simulations, some scaling is required to convert the intensities of the reduced system to what would be expected from the Earth's magnetosphere, which is discussed in the Appendix. Imaging devices also have a finite integration time, meaning that transient structures may be washed out due to time-averaging. For instance, the foreshock structures in this work are visible when averaging over less than approximately 15 s, while the integration time for the SMILE mission is several minutes (Branduardi-Raymont et al., 2018). More sensitive imagers in the future will likely be required to observe these structures. For these simulations, the solar wind density is relatively low, meaning that a longer integration time would be required to achieve a statistically significant signal to noise ratio, reducing the chances of seeing transient kinetic structures. Further kinetic studies with more favorable physical parameters such as higher densities and alternative IMF orientations will need to be performed to determine if the kinetic structures can be detected, and the conditions under which this will be possible.

To summarize, imaging using soft X-rays has been investigated using the results of hybrid simulations. The results show that kinetic structures can be seen in the X-ray emission signal, indicating the potential of this technique to observe kinetic physics. The ability of planned instruments to detect these kinetic structures will require further investigation.

### Appendix A: Scaling of Units to Realistic System Size

As mentioned in Section 2.1, the hybrid simulation uses a reduced length scale due to computational limitations. This is typical in hybrid simulations, where a compromise between physical accuracy and computational cost has to be made by scaling the  $\omega_{pi}/\Omega_{ci}$  ratio (ion plasma frequency to cyclotron frequency in the solar wind), the



**Figure A1.** Possible detector output using LEXI instrument parameters and a  $1^\circ \times 1^\circ$  resolution after integrating over 1,200 s, after the addition of noise and background.

solar wind density or size of the Earth (both effectively control  $d/R_E$ ) or under-resolving the simulation. In this work, we have chosen the solar wind density  $n = 5 \text{ cm}^{-3}$  to keep the ion cyclotron frequency reasonable, which effectively reduces the size of the Earth, though the system size is sufficient for the development of an Earth-like magnetosphere (Omidi et al., 2004; Tóth et al., 2017).

Because of this, the X-ray intensities are lower than in comparable MHD simulations (Connor et al., 2021; T. R. Sun et al., 2015; B. M. Walsh et al., 2016). From Equation 2, which we reproduce here for convenience,

$$R_{xray} = \frac{\alpha}{4\pi} \int N_p N_N v_{\text{eff}} ds [\text{eVcm}^{-2}\text{s}^{-1}\text{sr}^{-1}], \quad (\text{A1})$$

the only physical quantity which is reduced is the length scale, or the  $ds$  integral, which is reduced by an approximate factor of 5. One may perform a naïve scaling and multiply the intensities by this factor to obtain the expected intensities. If we compare the values from the figures in this paper to (Connor et al., 2021), we note that their magnetosheath signal is  $\sim 15 \text{ keVcm}^{-2} \text{ s}^{-1} \text{ sr}^{-1}$ , compared to  $\sim 4\text{--}7 \text{ keVcm}^{-2} \text{ s}^{-1} \text{ sr}^{-1}$  in this paper (Figures 2 and 4). However, noting that their solar wind density is  $10 \text{ cm}^{-3}$ , twice ours, we find that the X-ray intensities are overall consistent.

For comparing hybrid simulations to expected measurement results, it is necessary to use the scaled values to obtain reasonable predictions. An illustration of possible measurements from the southward IMF simulation is shown in Figure A1. To produce these measurements, we have used the calibration for LEXI to convert to X-ray counts, then added the galactic background and poisson noise, similar to (B. M. Walsh et al., 2016), and integrated over approximately 1,200 s because the solar wind density is low (due to the limited duration of the available simulation data in quasi-steady state, results are averaged over 300 s, then scaled by a factor of 4). For this paper, the low density, which leads to a weaker X-ray signal, was chosen as the physics in the simulations with these parameters has already been analyzed. Further work with a higher initial solar wind density will be necessary.

### Data Availability Statement

Data used in this paper are available at (Ng et al., 2023).

Acknowledgments

This work was supported by NSF Grant AGS2010231, NASA Grants 80NSSC21K1046, 80NSSC21K1483, 80NSSC23K0330.

References

Atz, E., Walsh, B., O'Brien, C., Collier, M., Berman, A., Billingsley, L., et al. (2022). The cusp plasma imaging detector (CuPID) cubesat observatory: Instrumentation. *Review of Scientific Instruments*, 93(6), 064504. <https://doi.org/10.1063/5.0085534>

Blanco-Cano, X., Omid, N., & Russell, C. T. (2009). Global hybrid simulations: Foreshock waves and cavitons under radial interplanetary magnetic field geometry. *Journal of Geophysical Research*, 114(A1), A01216. <https://doi.org/10.1029/2008JA013406>

Branduardi-Raymont, G., Sembay, S. F., Eastwood, J. P., Sibeck, D. G., Abbey, T. A., Brown, P., et al. (2012). Axiom: Advanced X-ray imaging of the magnetosphere. *Experimental Astronomy*, 33(2), 403–443. <https://doi.org/10.1007/s10686-011-9239-0>

Branduardi-Raymont, G., Wang, C., Escoubet, C. P., Adamovic, M., Agnolon, D., Berthomier, M., et al. (2018). *Smile definition study report (Vol. 1)*. European Space Agency, ESA/SCI. [https://doi.org/10.5270/esa.smile.definition\\_study\\_report-2018-12](https://doi.org/10.5270/esa.smile.definition_study_report-2018-12)

Carter, J. A., & Sembay, S. (2008). Identifying XMM-Newton observations affected by solar wind charge exchange. Part I. *Astronomy & Astrophysics*, 489(2), 837–848. <https://doi.org/10.1051/0004-6361/200809997>

Carter, J. A., Sembay, S., & Read, A. M. (2011). Identifying XMM-Newton observations affected by solar wind charge exchange—Part II. *Astronomy & Astrophysics*, 527, A115. <https://doi.org/10.1051/0004-6361/201015817>

Chen, L.-J., Ng, J., Omelchenko, Y., & Wang, S. (2021). Magnetopause reconnection and indentations induced by foreshock turbulence. *Geophysical Research Letters*, 48(11), e2021GL093029. <https://doi.org/10.1029/2021GL093029>

Chen, L.-J., Wang, S., Ng, J., Bessho, N., Tang, J.-M., Fung, S. F., et al. (2021). Solitary magnetic structures at quasi-parallel collisionless shocks: Formation. *Geophysical Research Letters*, 48(1), e2020GL090800. <https://doi.org/10.1029/2020GL090800>

Collier, M., Porter, F., Sibeck, D., Carter, J., Chiao, M., Chornay, D., et al. (2012). Prototyping a global soft X-ray imaging instrument for heliophysics, planetary science, and astrophysics science. *Astronomische Nachrichten*, 333(4), 378–382. <https://doi.org/10.1002/asna.201211662>

Collier, M. R., & Connor, H. K. (2018). Magnetopause surface reconstruction from tangent vector observations. *Journal of Geophysical Research: Space Physics*, 123(12), 10189–10199. <https://doi.org/10.1029/2018JA025763>

Connor, H. K., Sibeck, D. G., Collier, M. R., Baliukin, I. I., Branduardi-Raymont, G., Brandt, P. C., et al. (2021). Soft X-ray and ENA imaging of the Earth's dayside magnetosphere. *Journal of Geophysical Research: Space Physics*, 126(3), e2020JA028816. <https://doi.org/10.1029/2020JA028816>

Cravens, T. E., Robertson, I. P., & Snowden, S. L. (2001). Temporal variations of geocoronal and heliospheric X-ray emission associated with the solar wind interaction with neutrals. *Journal of Geophysical Research*, 106(A11), 24883–24892. <https://doi.org/10.1029/2000JA000461>

Freyberg, M. J. (1998). On the zero-level of the soft X-ray background. In D. Breitschwerdt, M. Freyberg, & J. Trümper (Eds.), *The local bubble and beyond Lyman-Spitzer colloquium* (pp. 113–116). Springer Berlin Heidelberg.

Hietala, H., Partamies, N., Laitinen, T., Clausen, L. B., Facskó, G., Vaivads, A., et al. (2012). Supermagnetosonic subsolar magnetosheath jets and their effects: From the solar wind to the ionospheric convection. In *Annales geophysicae*.

Kajdič, P., Blanco-Cano, X., Omid, N., & Russell, C. T. (2011). Multi-spacecraft study of foreshock cavitons upstream of the quasi-parallel bow shock. *Planetary and Space Science*, 59(8), 705–714. <https://doi.org/10.1016/j.pss.2011.02.005>

Kuntz, K. D., Collado-Vega, Y. M., Collier, M. R., Connor, H. K., Cravens, T. E., Koutroumpa, D., et al. (2015). The solar wind charge-exchange production factor for hydrogen. *The Astrophysical Journal*, 808(2), 143. <https://doi.org/10.1088/0004-637X/808/2/143>

Kuntz, K. D., & Snowden, S. L. (2000). Deconstructing the spectrum of the soft X-ray background. *The Astrophysical Journal*, 543(1), 195–215. <https://doi.org/10.1086/317071>

Lavraud, B., Fedorov, A., Budnik, E., Thomsen, M. F., Grigoriev, A., Cargill, P. J., & Balogh, A. (2005). High-altitude cusp flow dependence on IMF orientation: A 3-year cluster statistical study. *Journal of Geophysical Research*, 110(A2), A02209. <https://doi.org/10.1029/2004JA010804>

Lin, Y., & Wang, X. Y. (2005). Three-dimensional global hybrid simulation of dayside dynamics associated with the quasi-parallel bow shock. *Journal of Geophysical Research*, 110(A12), A12216. <https://doi.org/10.1029/2005JA011243>

Matsumoto, Y., & Miyoshi, Y. (2022). Soft X-ray imaging of magnetopause reconnection outflows under low plasma- $\beta$  solar wind conditions. *Geophysical Research Letters*, 49(19), e2022GL101037. <https://doi.org/10.1029/2022GL101037>

Ng, J., Chen, L.-J., Omelchenko, Y., Zou, Y., & Lavraud, B. (2022a). Hybrid simulations of the cusp and dayside magnetosheath dynamics under quasi-radial interplanetary magnetic fields. *Journal of Geophysical Research: Space Physics*, 127(10), e2022JA030359. <https://doi.org/10.1029/2022JA030359>

Ng, J., Chen, L.-J., Omelchenko, Y., Zou, Y., & Lavraud, B. (2022b). Movies for “Hybrid simulations of the cusp and dayside magnetosheath dynamics under quasi-radial interplanetary magnetic fields”. *Zenodo*. <https://doi.org/10.5281/zenodo.6986351>

Ng, J., Chen, L.-J., & Omelchenko, Y. A. (2021). Bursty magnetic reconnection at the Earth's magnetopause triggered by high-speed jets. *Physics of Plasmas*, 28(9), 092902. <https://doi.org/10.1063/5.0054394>

Ng, J., Walsh, B., Chen, L.-J., & Omelchenko, Y. (2023). Dataset for Soft X-ray imaging of Earth's dayside magnetosheath and cusps using hybrid simulations. *Zenodo*. <https://doi.org/10.5281/zenodo.7651556>

Omelchenko, Y., Chen, L.-J., & Ng, J. (2021). 3D space-time adaptive hybrid simulations of magnetosheath high-speed jets. *Journal of Geophysical Research: Space Physics*, 126(7), e2020JA029035. <https://doi.org/10.1029/2020JA029035>

Omelchenko, Y., & Karimabadi, H. (2012). Hypers: A unidimensional asynchronous framework for multiscale hybrid simulations. *Journal of Computational Physics*, 231(4), 1766–1780. <https://doi.org/10.1016/j.jcp.2011.11.004>

Omelchenko, Y. A., Roytershteyn, V., Chen, L.-J., Ng, J., & Hietala, H. (2021). Hypers simulations of solar wind interactions with the Earth's magnetosphere and the moon. *Journal of Atmospheric and Solar-Terrestrial Physics*, 215, 105581. <https://doi.org/10.1016/j.jastp.2021.105581>

Omid, N., Berchem, J., Sibeck, D., & Zhang, H. (2016). Impacts of spontaneous hot flow anomalies on the magnetosheath and magnetopause. *Journal of Geophysical Research: Space Physics*, 121(4), 3155–3169. <https://doi.org/10.1002/2015JA022170>

Omid, N., Blanco-Cano, X., Russell, C., & Karimabadi, H. (2004). Dipolar magnetospheres and their characterization as a function of magnetic moment. *Advances in Space Research*, 33(11), 1996–2003. <https://doi.org/10.1016/j.asr.2003.08.041>

Raptis, S., Karlsson, T., Plaschke, F., Kullen, A., & Lindqvist, P.-A. (2020). Classifying magnetosheath jets using mms: Statistical properties. *Journal of Geophysical Research: Space Physics*, 125(11), e2019JA027754. <https://doi.org/10.1029/2019JA027754>

Samsonov, A., Carter, J. A., Read, A., Sembay, S., Branduardi-Raymont, G., Sibeck, D., & Escoubet, P. (2022). Finding magnetopause standoff distance using a soft X-ray imager: 1. Magnetospheric masking. *Journal of Geophysical Research: Space Physics*, 127(12), e2022JA030848. <https://doi.org/10.1029/2022JA030848>

Samsonov, A., Sembay, S., Read, A., Carter, J. A., Branduardi-Raymont, G., Sibeck, D., & Escoubet, P. (2022). Finding magnetopause standoff distance using a soft X-ray imager: 2. Methods to analyze 2-D X-ray images. *Journal of Geophysical Research: Space Physics*, 127(12), e2022JA030850. <https://doi.org/10.1029/2022JA030850>

Schwartz, S. J., Burgess, D., Wilkinson, W. P., Kessel, R. L., Dunlop, M., & Lüth, H. (1992). Observations of short large-amplitude magnetic structures at a quasi-parallel shock. *Journal of Geophysical Research*, 97(A4), 4209–4227. <https://doi.org/10.1029/91JA02581>

- Shi, F., Lin, Y., Wang, X., Wang, B., & Nishimura, Y. (2021). 3-d global hybrid simulations of magnetospheric response to foreshock processes. *Earth Planets and Space*, 73, 1–17. <https://doi.org/10.1186/s40623-021-01469-2>
- Sibeck, D. G., Allen, R., Aryan, H., Bodewits, D., Brandt, P., Branduardi-Raymont, G., et al. (2018). Imaging plasma density structures in the soft X-rays generated by solar wind charge exchange with neutrals. *Space Science Reviews*, 214(4), 1–124. <https://doi.org/10.1007/s11214-018-0504-7>
- Sun, T., Wang, C., Connor, H. K., Jorgensen, A. M., & Sembay, S. (2020). Deriving the magnetopause position from the soft X-ray image by using the tangent fitting approach. *Journal of Geophysical Research: Space Physics*, 125(9), e2020JA028169. <https://doi.org/10.1029/2020JA028169>
- Sun, T. R., Wang, C., Sembay, S. F., Lopez, R. E., Escoubet, C. P., Branduardi-Raymont, G., et al. (2019). Soft X-ray imaging of the magnetosheath and cusps under different solar wind conditions: MHD simulations. *Journal of Geophysical Research: Space Physics*, 124(4), 2435–2450. <https://doi.org/10.1029/2018JA026093>
- Sun, T. R., Wang, C., Wei, F., & Sembay, S. (2015). X-ray imaging of kelvin-Helmholtz waves at the magnetopause. *Journal of Geophysical Research: Space Physics*, 120(1), 266–275. <https://doi.org/10.1002/2014JA020497>
- Suvorova, A. V., Shue, J.-H., Dmitriev, A. V., Sibeck, D. G., McFadden, J. P., Hasegawa, H., et al. (2010). Magnetopause expansions for quasi-radial interplanetary magnetic field: THEMIS and geotail observations. *Journal of Geophysical Research*, 115(A10), A10216. <https://doi.org/10.1029/2010JA015404>
- Tóth, G., Chen, Y., Gombosi, T. I., Cassak, P., Markidis, S., & Peng, I. B. (2017). Scaling the ion inertial length and its implications for modeling reconnection in global simulations. *Journal of Geophysical Research: Space Physics*, 122(10), 10336–10355. <https://doi.org/10.1002/2017JA024189>
- Trümper, J. (1982). The ROSAT mission. *Advances in Space Research*, 2(4), 241–249. [https://doi.org/10.1016/0273-1177\(82\)90070-9](https://doi.org/10.1016/0273-1177(82)90070-9)
- Walsh, B., Collier, M. R., Busk, S., Connor, H., Kuntz, K. D., McShane, J., et al. (2020). The lunar environment heliospheric X-ray imager (LEXI)-a mission for global magnetospheric imaging. *AgU fall meeting abstracts*.
- Walsh, B. M., Collier, M. R., Kuntz, K. D., Porter, F. S., Sibeck, D. G., Snowden, S. L., et al. (2016). Wide field-of-view soft X-ray imaging for solar wind-magnetosphere interactions. *Journal of Geophysical Research: Space Physics*, 121(4), 3353–3361. <https://doi.org/10.1002/2016JA022348>
- Wang, C., & Sun, T. (2022). Methods to derive the magnetopause from soft X-ray images by the smile mission. *Geoscience Letters*, 9(1), 1–13. <https://doi.org/10.1186/s40562-022-00240-z>
- Wang, X. Y., Lin, Y., & Chang, S.-W. (2009). Hybrid simulation of foreshock waves and ion spectra and their linkage to cusp energetic ions. *Journal of Geophysical Research*, 114(A6), A06203. <https://doi.org/10.1029/2008JA013745>
- Zhang, H., Sibeck, D. G., Zong, Q.-G., Omid, N., Turner, D., & Clausen, L. B. N. (2013). Spontaneous hot flow anomalies at quasi-parallel shocks: 1. Observations. *Journal of Geophysical Research: Space Physics*, 118(6), 3357–3363. <https://doi.org/10.1002/jgra.50376>
- Zwan, B. J., & Wolf, R. A. (1976). Depletion of solar wind plasma near a planetary boundary. *Journal of Geophysical Research*, 81(10), 1636–1648. <https://doi.org/10.1029/JA081i010p01636>