

1892

An Appeal for the Hospital, Dispensary and Medical School

<https://hdl.handle.net/2144/47419>

"Downloaded from OpenBU. Boston University's institutional repository."

LIBRARY
BOSTON UNIVERSITY
SCHOOL OF MEDICINE



HOSPITAL,

DISPENSARY,

MEDICAL SCHOOL.

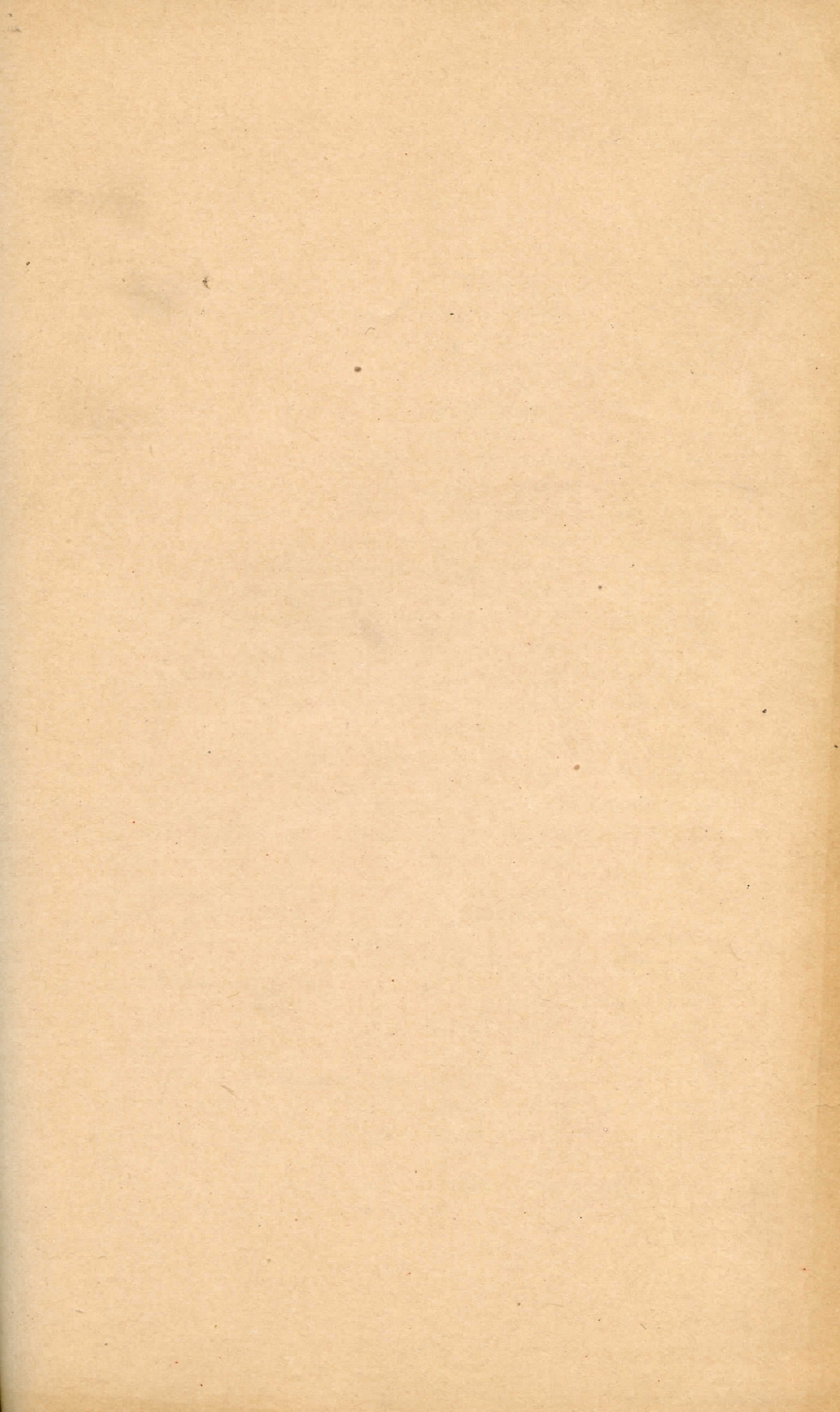
1892.

MASSACHUSETTS
HOMŒOPATHIC HOSPITAL,

HOMŒOPATHIC MEDICAL DISPENSARY,

BOSTON UNIVERSITY
SCHOOL OF MEDICINE.

1892.



AN APPEAL

FOR THE

HOSPITAL, DISPENSARY, AND MEDICAL SCHOOL.

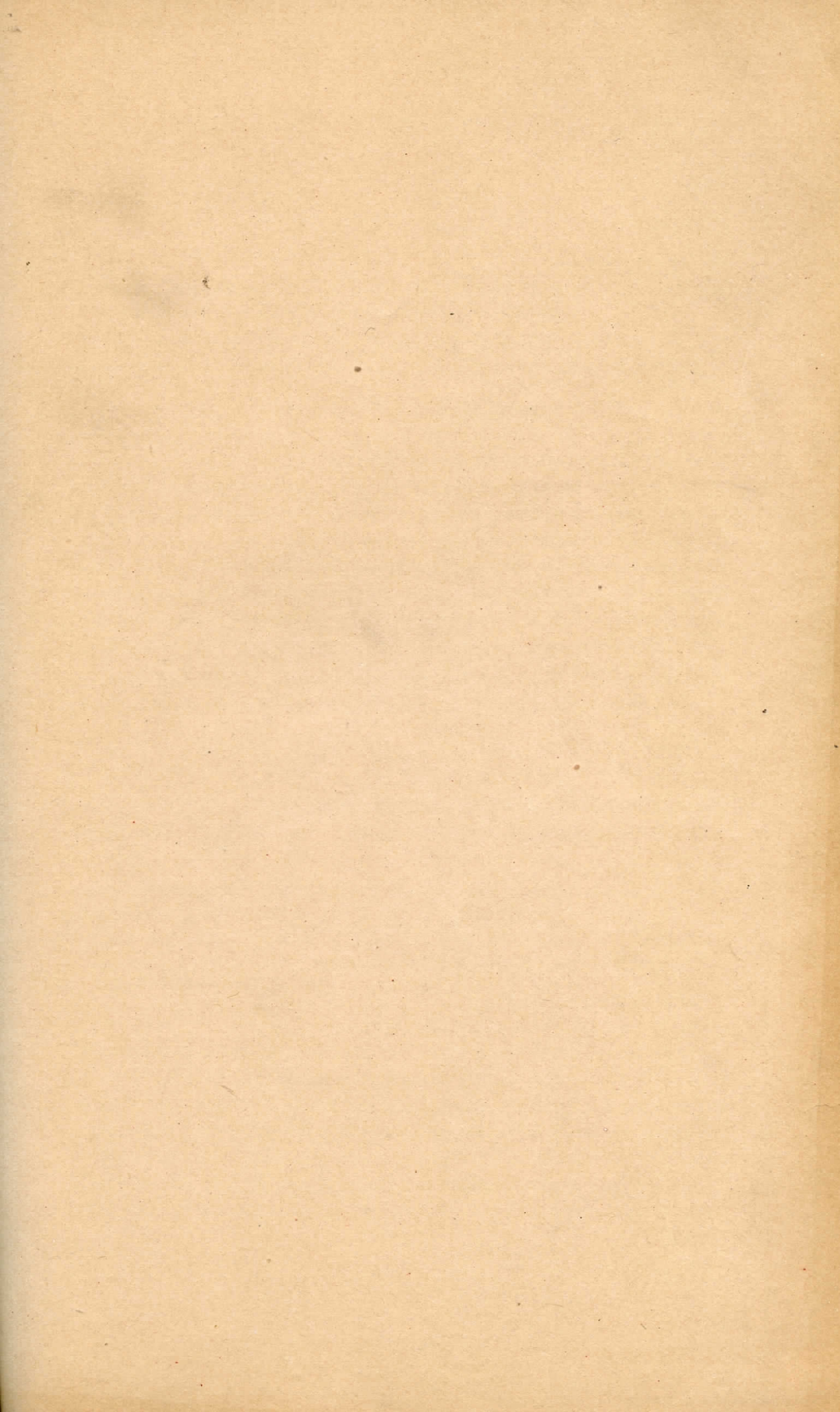
THESE three institutions, separately chartered, and, so far as pecuniary matters are concerned, entirely independent of each other, are yet intimately connected.

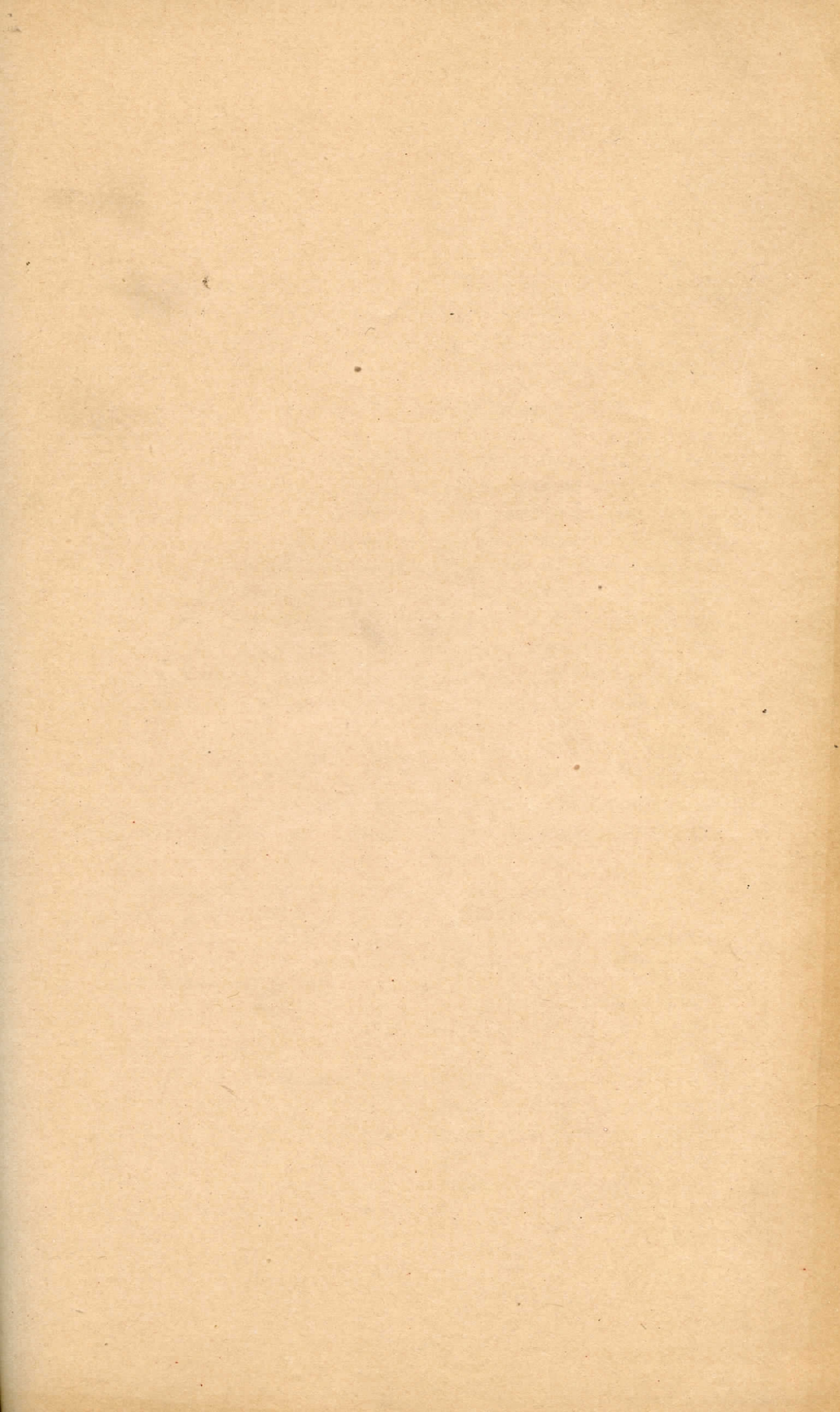
The Hospital provides for those who are too sick to care for themselves or who need such special nursing, constant care, and professional skill as they can secure only within a Hospital.

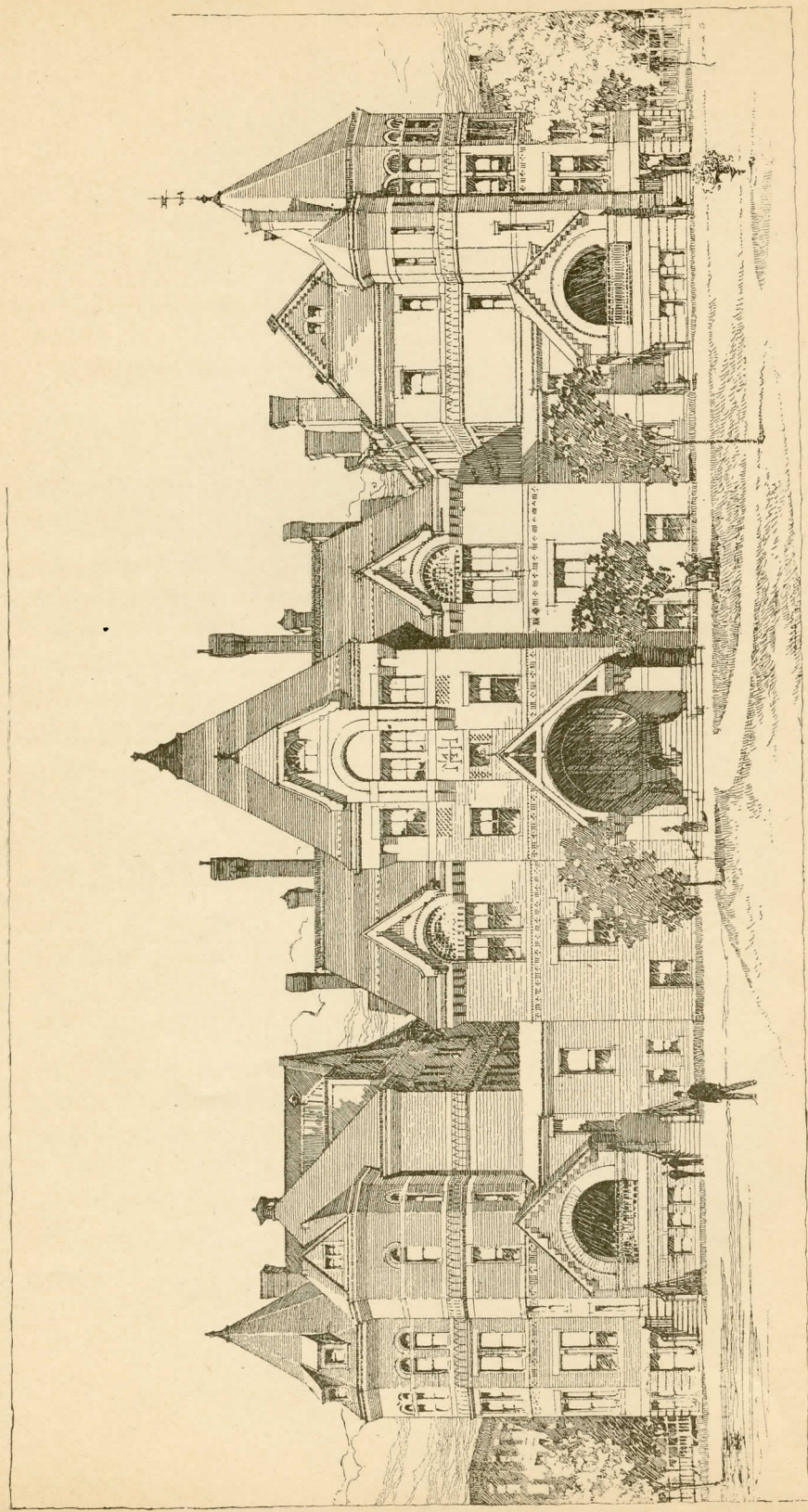
The Dispensary gives medical and surgical treatment to those usually known as out-patients, who are able to come from their homes and obtain, in the earlier stages or milder forms of disease, such treatment as will restore them to health or alleviate their sufferings.

The School of Medicine educates physicians qualified, as far as it is possible for education to qualify them, for the duties, cares, and responsibilities of the medical profession. Here, under the instruction of skilful and experienced physicians, they are taught such knowledge of the conditions of disease and sickness as will fit them for the care of individuals and communities.

These institutions are of essential importance to the whole public; and there is no person however rich or however poor who may not at some time become greatly dependent upon them for personal health and comfort. To this public they now appeal for that support and assistance which shall enable them to do their work in the best manner.







MASSACHUSETTS HOMŒOPATHIC HOSPITAL.

INCORPORATED, 1856. OPENED TO PATIENTS, 1871.

President, CHARLES R. CODMAN.

Treasurer, SPENCER W. RICHARDSON, 40 Water Street, Boston.

Secretary, GEORGE W. JACKSON, 31 Milk Street, Boston.

This Hospital in 1871 first occupied a house at 14 Burroughs Place, with fourteen beds for patients.

In 1872 a public fair which netted \$80,000, furnished means for its enlargement. Land was bought on East Concord Street, and a building erected which provided for forty patients.

In 1882 this was enlarged to provide for eighty patients.

In 1890, the legislature of the State appropriated \$120,000, for further additions.

These are now completed, and the Hospital consists of a central, or administration building, a medical wing, a surgical wing and surgical extension, a boiler-house and laundry, a kitchen, a cottage, or isolating ward, and a mortuary, — eight buildings in all. It contains two hundred beds for patients, and about fifty beds for assistants.

It has provided for 5,561 patients, with a mortality of four and one third per cent, — a death-rate far below that of hospitals intended for similar classes of disease.

Its success in the treatment of severe and sometimes hopeless cases, has been in a high degree satisfactory.

It has up to the present time been liberally supported by the community, which has only required that its wants should be made known in order to provide for them.

At the present time these wants are as follows : —

1. Its regular income from investments has never been sufficient to pay its expenses, and the deficit has been made up by liberal contributions from the community.

2. The great enlargement of its work, from eighty to two hundred beds, brings many additional necessities. The new buildings are to be furnished throughout. Formerly this has been done by individuals, who furnished a ward, or even a single bed in a ward, at an expense varying according to the size of the ward, with the privilege of giving thereto their own name or such other as they might choose. Already some of these new wards have been thus furnished.

3. It is the desire of the Trustees and friends of the Hospital to make this institution, as far as possible, free to the poor. For this purpose twenty free beds have been already provided, and many more are needed.

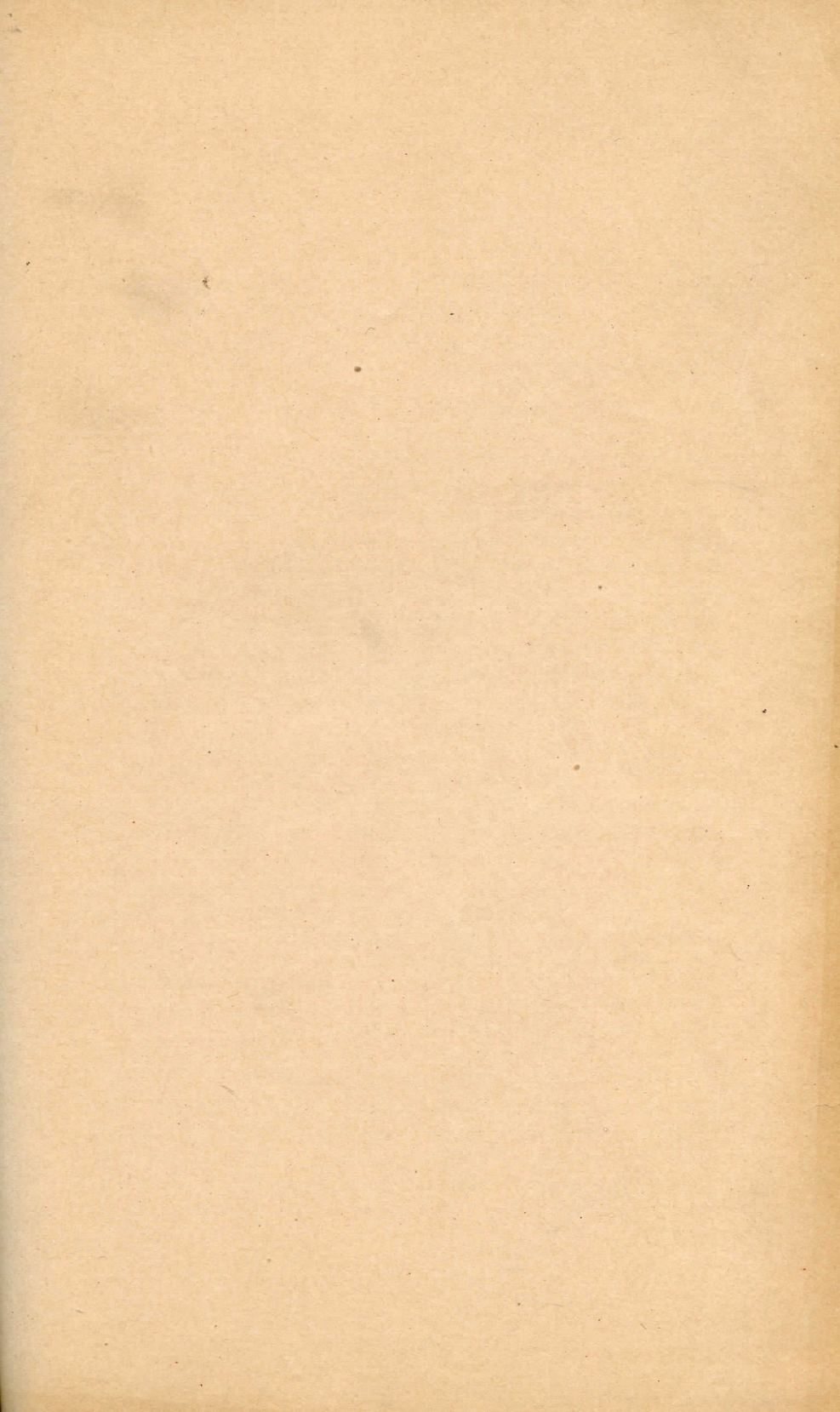
A contribution of \$5,000 establishes such a free bed permanently; \$2,500 gives one the life use of a free bed, and \$1,000 the life use of it three months in each year. Yearly subscriptions of smaller sums may be used for free patients by subscribers to the full amount of money given. Annual subscriptions, donations, or contributions of any kind will be carefully devoted to the best uses of the Hospital.

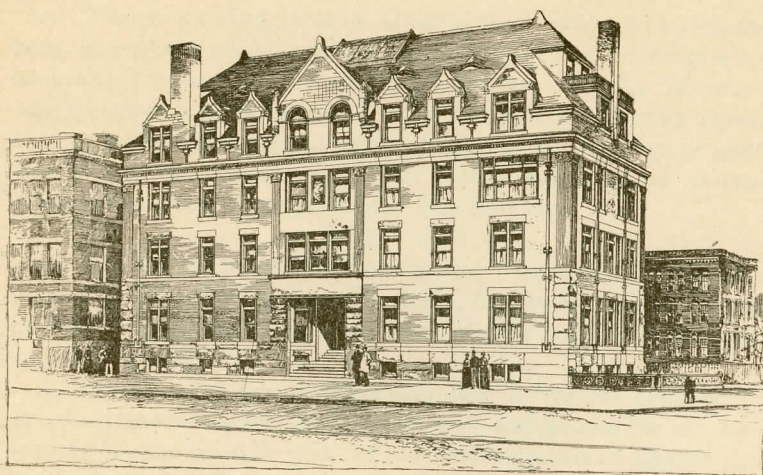
4. The Training School for Nurses is of great importance, alike to the Hospital and to the community, in which these nurses will be subsequently employed. Donations for its support or to give additional instruction will be of service.

All contributions of money may be sent to the Treasurer of the Hospital, Spencer W. Richardson, 40 Water Street, Boston, and any information in regard to the Hospital may be obtained of Dr. Thomas M. Strong, the Resident Physician at the Hospital.

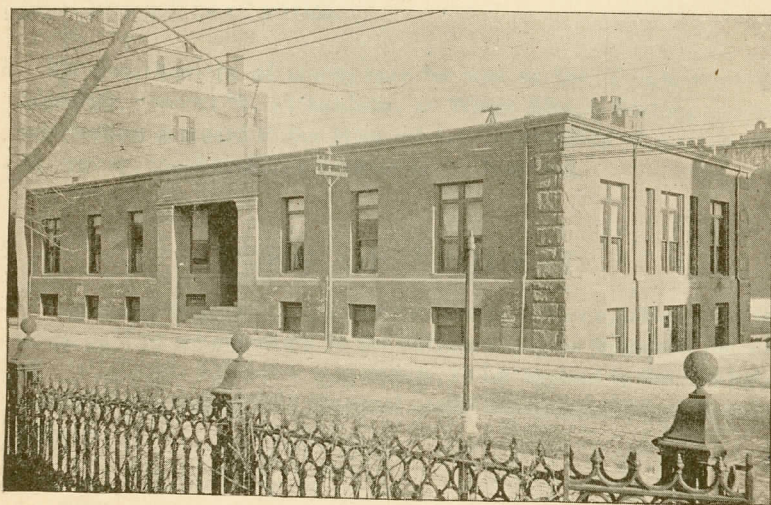
FORM OF BEQUEST.

give and bequeath to the Massachusetts Homœopathic Hospital, to be paid by my executors to the person acting as treasurer, the sum of _____ dollars, to be applied to the charitable uses and purposes of said Hospital under the direction of its Board of Officers.





HOMŒOPATHIC MEDICAL DISPENSARY AS DESIGNED.



HOMŒOPATHIC MEDICAL DISPENSARY AS FAR AS ERECTED.

HOMŒOPATHIC MEDICAL DISPENSARY.

INCORPORATED, 1856.

President, FRANCIS A. DEWSON.

Treasurer, J. W. CLAPP, 10 Park Square.

Secretary, I. T. TALBOT, 66 Marlborough Street.

This Dispensary was opened to the public in 1857.

In thirty-five years it has treated 225,368 sick and poor persons, and administered 598,636 prescriptions.

From lack of proper rooms and conveniences, its work has been done under great disadvantages alike to the patients and the physicians in attendance.

In 1889 an effort was made to secure better accommodations for the large and increasing work of the Dispensary. The City of Boston contributed a fine building lot at the corner of Harrison Avenue and Stoughton Street, and upon this have been erected two stories of a spacious and convenient structure, which provide in a measure for the present wants of the Dispensary. Yet additional room could be used most advantageously, and is absolutely necessary to provide for important and very desirable departments.

The completion of the building, as designed, by the erection of three additional stories, will not only give more room to the Dispensary but provide for a new and important Maternity, or Lying-In Hospital, which would be of inestimable value to the community, and to a class of patients whose sufferings and want appeal most strongly for our sympathies and assistance.

To carry out the aims of this institution requires:—

1. Funds to meet the expenses of the present Dispensary. Yearly donations of even the smallest sums will aid in the work.

2. A sum sufficient to complete the present structure, and afford opportunity for its greater usefulness. This appeals to the generous and philanthropic, who would thus not only increase the value of the Dispensary work but add a new and important charity to the city and State.

3. The endowment of this institution so that its work may always be provided for.

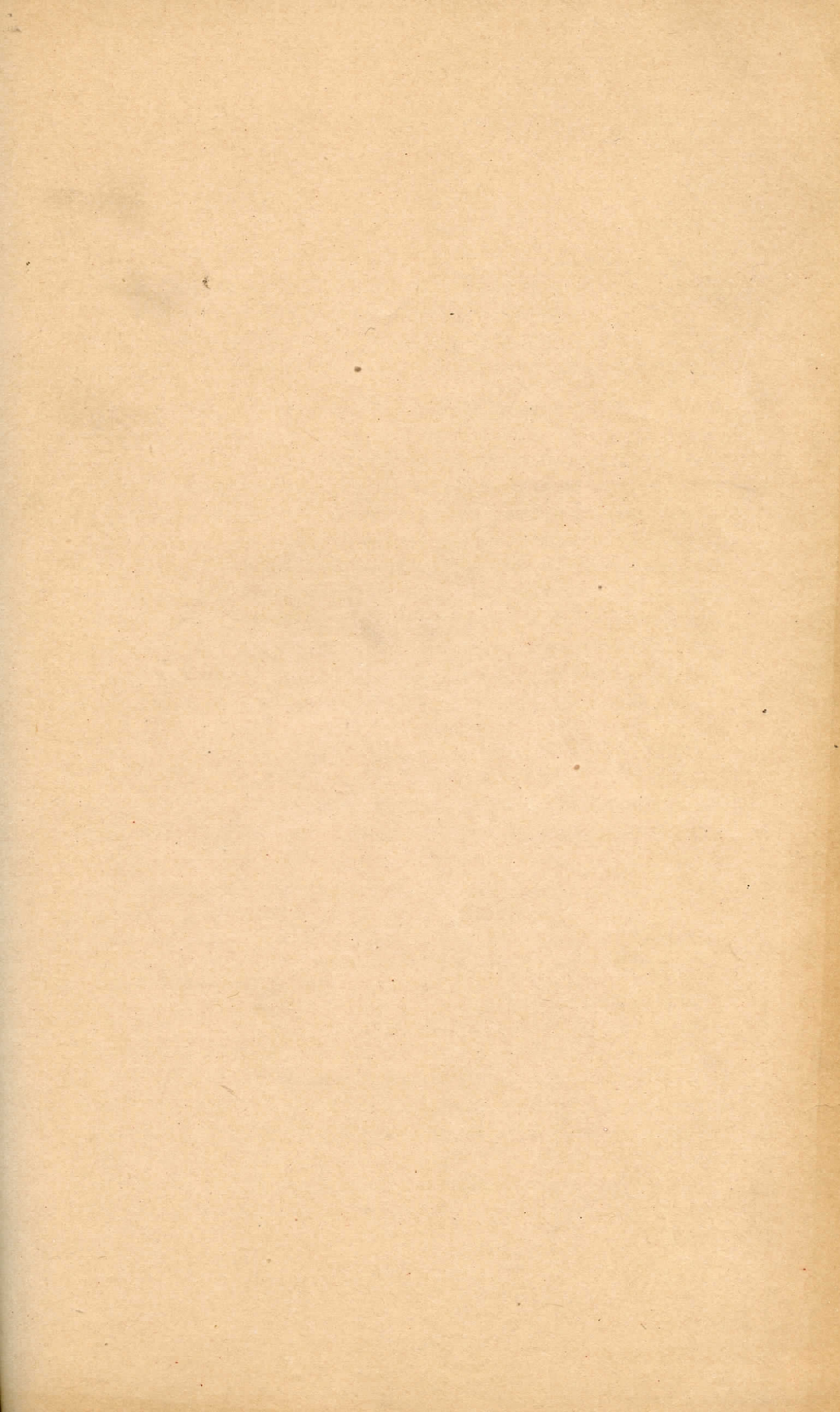
Sums may be contributed in any amount, and will be economically used.

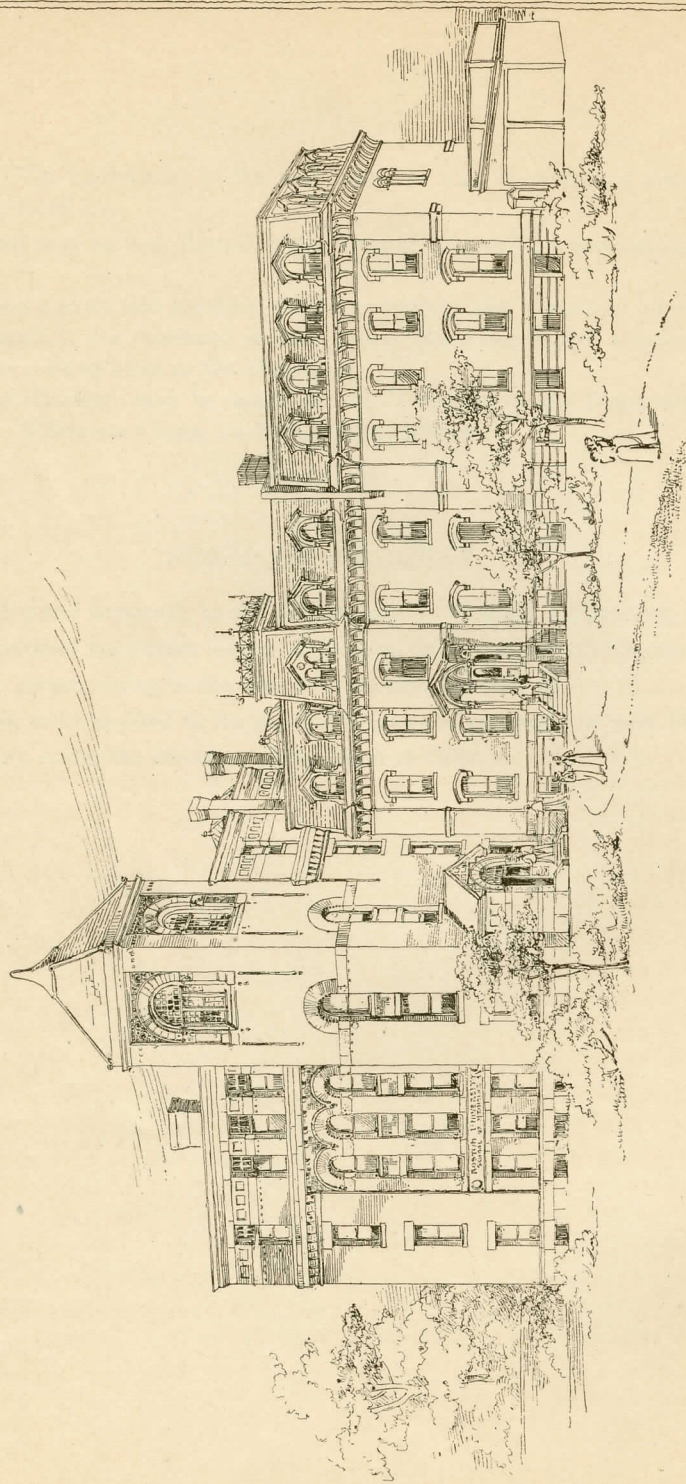
Donations of one hundred dollars constitute one a member of the Corporation, one thousand dollars makes one a donor, five thousand dollars a Benefactor of the Dispensary.

Contributions may be made to the Treasurer of the Dispensary, Dr. J. Wilkinson Clapp, 10 Park Square, Boston.

FORM OF BEQUEST.

I give and bequeath to the Homœopathic Medical Dispensary, an incorporated institution located in Boston, to be paid by my executors to the person acting at the time as treasurer, the sum of _____ dollars, to be applied to the charitable uses and purposes of said Dispensary, under the direction of its Board of Officers.





BOSTON UNIVERSITY : SCHOOL OF MEDICINE.

BOSTON UNIVERSITY SCHOOL OF MEDICINE.

ESTABLISHED 1873.

President.—WILLIAM F. WARREN.

Treasurer.—RICHARD W. HASTED, 12 Somerset Street.

Dean.—I. T. TALBOT, 66 Marlboro Street.

From the opening of this school, the effort of its Faculty has been to improve the methods of medical instruction and to render its curriculum more thorough and complete. This has been done in part by requiring a preliminary examination on entering the School, lengthening the course of study to three years instead of two, extending the yearly term of instruction to eight months instead of five, organizing a systematic progressive course of study, by which students proceed upon examination from one year's work to the next, arranging laboratory courses in the practical sciences, and clinical work in the various medical and surgical diseases, and now, in its latest effort, it has established a *four years' course*, in which the students pursue a regular graded course, advancing only according to their attainments and proficiency. This term of four years of medical study is acknowledged by the best physicians as none too long to acquire a through medical education, and this school is the first in this country to adopt it as a requirement for a degree.

The Massachusetts Homœopathic Hospital, erected at a cost exceeding \$280,000, and maintained at large annual expense, and the Homœopathic Medical Dispensary, costing \$60,000, which treats more than fifteen thousand patients annually, supply the School with ample facilities for instruction. In both of these institutions the students are of great service in assisting the Faculty and Medical Staff, and at the same time they acquire medical knowledge and experience of the greatest value.

A new substantial fire-proof addition to the College building has been completed at a cost of \$70,000, which will provide laboratories, library, museum, reading, lecture, and experimental rooms for the most thorough work. All this has required great personal effort and sacrifice on the part of the Faculty and friends of the School, and

there are yet many wants unsupplied. When we consider the work of this Medical School; that it has educated more than five hundred physicians who are in active practice, and annually have intrusted to their care the lives of many thousands of people; that it is a school which takes the most advanced position, and, by its example, aids in improving the whole system of medical instruction in the country; we present a strong claim upon our friends and the community for assistance which is now much needed.

Its requirements are:—

1. Help to pay its present indebtedness.
2. Means to fully equip all its laboratories.
3. A library stocked with all the recent as well as standard medical publications.
4. A museum filled with anatomical, physiological, and pathological specimens and studies in every department.
5. A fund sufficient to enable the Trustees to secure the best attainable teachers and assistants in every department of the school.
6. Scholarships by which to assist many worthy students, often of unusual capacity, who cannot otherwise complete a thorough course.

To accomplish these objects there should be raised an ample fund.

Is there any way in which philanthropy, generosity, and wealth can better contribute to the comfort, welfare, and health of the community than by training and educating its physicians, who have in their charge the health and even life of rich as well as poor?

Contributions in any amount to the Boston University School of Medicine may be sent to the treasurer of Boston University, R. W. Husted, Esq., 12 Somerset Street, Boston.

FORM OF BEQUEST.

I will and bequeath to Boston University, to be paid by my executors to the person acting at the time as Treasurer, the sum of _____ dollars, to be applied to the uses and purposes of the School of Medicine of said Boston University, under the direction of its Board of Trustees.

